

XPR1 Antibody (N-term)
Affinity Purified Rabbit Polyclonal Antibody (Pab)
Catalog # AP18387A

Specification

XPR1 Antibody (N-term) - Product Information

Application	WB,E
Primary Accession	O9UBH6
Other Accession	O9Z0U0 , O9QZ70 , NP_001129141.1
Reactivity	Human
Predicted	Hamster, Mouse
Host	Rabbit
Clonality	Polyclonal
Isotype	Rabbit IgG
Calculated MW	81535
Antigen Region	96-122

XPR1 Antibody (N-term) - Additional Information

Gene ID 9213

Other Names

Xenotropic and polytropic retrovirus receptor 1, Protein SYG1 homolog, Xenotropic and polytropic murine leukemia virus receptor X3, X-receptor, XPR1, SYG1, XR

Target/Specificity

This XPR1 antibody is generated from rabbits immunized with a KLH conjugated synthetic peptide between 96-122 amino acids from the N-terminal region of human XPR1.

Dilution

WB~~1:1000

Format

Purified polyclonal antibody supplied in PBS with 0.09% (W/V) sodium azide. This antibody is purified through a protein A column, followed by peptide affinity purification.

Storage

Maintain refrigerated at 2-8°C for up to 2 weeks. For long term storage store at -20°C in small aliquots to prevent freeze-thaw cycles.

Precautions

XPR1 Antibody (N-term) is for research use only and not for use in diagnostic or therapeutic procedures.

XPR1 Antibody (N-term) - Protein Information

Name XPR1 {ECO:0000303|PubMed:31043717}

Function Inorganic ion transporter that mediates phosphate ion export across plasma membrane. Plays a major role in phosphate homeostasis, preventing intracellular phosphate accumulation and possible calcium phosphate precipitation, ultimately preserving calcium signaling. The molecular mechanism of phosphate transport, whether electrogenic, electroneutral or coupled to other ions, remains to be elucidated (By similarity) (PubMed:[23791524](#), PubMed:[25938945](#), PubMed:[31043717](#)). Binds inositol hexakisphosphate (Ins6P) and similar inositol polyphosphates, such as 5-diphospho-inositol pentakisphosphate (5-InsP7), important intracellular signaling molecules involved in regulation of phosphate flux (PubMed:[27080106](#)).

Cellular Location

Cell membrane; Multi-pass membrane protein

Tissue Location

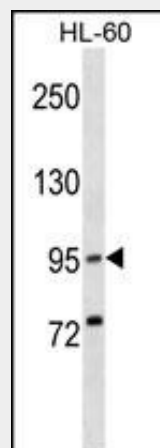
Widely expressed. Detected in spleen, lymph node, thymus, leukocytes, bone marrow, heart, kidney, pancreas and skeletal muscle.

XPR1 Antibody (N-term) - Protocols

Provided below are standard protocols that you may find useful for product applications.

- [Western Blot](#)
- [Blocking Peptides](#)
- [Dot Blot](#)
- [Immunohistochemistry](#)
- [Immunofluorescence](#)
- [Immunoprecipitation](#)
- [Flow Cytometry](#)
- [Cell Culture](#)

XPR1 Antibody (N-term) - Images



XPR1 Antibody (N-term) (Cat. #AP18387a) western blot analysis in HL-60 cell line lysates (35ug/lane). This demonstrates the XPR1 Antibody detected the XPR1 protein (arrow).

XPR1 Antibody (N-term) - Background

XPR1 may function in G-protein coupled signal transduction (By similarity). Potential receptor for xenotropic and polytropic murine leukemia retroviruses.

XPR1 Antibody (N-term) - References

Bhosle, S., et al. J. Virol. 84(13):6288-6296(2010)
Rose, J.E., et al. Mol. Med. 16 (7-8), 247-253 (2010) :
Battini, J.L., et al. Proc. Natl. Acad. Sci. U.S.A. 96(4):1385-1390(1999)
Tailor, C.S., et al. Proc. Natl. Acad. Sci. U.S.A. 96(3):927-932(1999)
Yang, Y.L., et al. Nat. Genet. 21(2):216-219(1999)