

FUT11 Antibody (Center)
Affinity Purified Rabbit Polyclonal Antibody (Pab)
Catalog # AP18331c**Specification**

FUT11 Antibody (Center) - Product Information

Application	WB,E
Primary Accession	O495W5
Other Accession	NP_775811.2
Reactivity	Human, Mouse
Host	Rabbit
Clonality	Polyclonal
Isotype	Rabbit IgG
Calculated MW	55816
Antigen Region	204-233

FUT11 Antibody (Center) - Additional Information**Gene ID** 170384**Other Names**

Alpha-(1, 3)-fucosyltransferase 11, 241-, Fucosyltransferase XI, Fuc-TXI, FucT-XI, Galactoside 3-L-fucosyltransferase 11, Fucosyltransferase 11, FUT11

Target/Specificity

This FUT11 antibody is generated from rabbits immunized with a KLH conjugated synthetic peptide between 204-233 amino acids from the Central region of human FUT11.

Dilution

WB~~1:1000

Format

Purified polyclonal antibody supplied in PBS with 0.09% (W/V) sodium azide. This antibody is purified through a protein A column, followed by peptide affinity purification.

Storage

Maintain refrigerated at 2-8°C for up to 2 weeks. For long term storage store at -20°C in small aliquots to prevent freeze-thaw cycles.

Precautions

FUT11 Antibody (Center) is for research use only and not for use in diagnostic or therapeutic procedures.

FUT11 Antibody (Center) - Protein Information**Name** FUT11 {ECO:0000303|PubMed:19088067, ECO:0000312|HGNC:HGNC:19233}**Function** [Isoform 1]: Has minor fucosyltransferase activity toward biantennary N-glycan

acceptors. Does not fucosylate GlcNAc residue within type 2 lactosamine unit.

Cellular Location

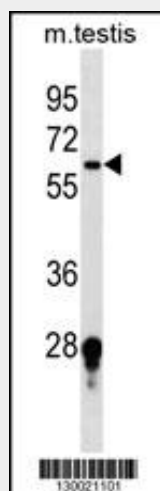
Golgi apparatus, Golgi stack membrane; Single-pass type II membrane protein

FUT11 Antibody (Center) - Protocols

Provided below are standard protocols that you may find useful for product applications.

- [Western Blot](#)
- [Blocking Peptides](#)
- [Dot Blot](#)
- [Immunohistochemistry](#)
- [Immunofluorescence](#)
- [Immunoprecipitation](#)
- [Flow Cytometry](#)
- [Cell Culture](#)

FUT11 Antibody (Center) - Images



FUT11 Antibody (Center) (Cat. #AP18331c) western blot analysis in mouse testis tissue lysates (35ug/lane). This demonstrates the FUT11 Antibody detected the FUT11 protein (arrow).

FUT11 Antibody (Center) - Background

Probable fucosyltransferase (By similarity).

FUT11 Antibody (Center) - References

Mollicone, R., et al. J. Biol. Chem. 284(7):4723-4738(2009)
Roos, C., et al. J. Biol. Chem. 277(5):3168-3175(2002)