

THAP10 Antibody (N-term)
Affinity Purified Rabbit Polyclonal Antibody (Pab)
Catalog # AP18325a

Specification

THAP10 Antibody (N-term) - Product Information

Application	WB,E
Primary Accession	O9P2Z0
Other Accession	NP_064532.1
Reactivity	Human
Host	Rabbit
Clonality	Polyclonal
Isotype	Rabbit IgG
Calculated MW	28351
Antigen Region	83-112

THAP10 Antibody (N-term) - Additional Information

Gene ID 56906

Other Names

THAP domain-containing protein 10, THAP10

Target/Specificity

This THAP10 antibody is generated from rabbits immunized with a KLH conjugated synthetic peptide between 83-112 amino acids from the N-terminal region of human THAP10.

Dilution

WB~~1:1000

Format

Purified polyclonal antibody supplied in PBS with 0.09% (W/V) sodium azide. This antibody is purified through a protein A column, followed by peptide affinity purification.

Storage

Maintain refrigerated at 2-8°C for up to 2 weeks. For long term storage store at -20°C in small aliquots to prevent freeze-thaw cycles.

Precautions

THAP10 Antibody (N-term) is for research use only and not for use in diagnostic or therapeutic procedures.

THAP10 Antibody (N-term) - Protein Information

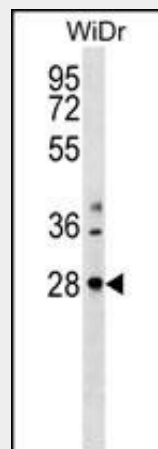
Name THAP10

THAP10 Antibody (N-term) - Protocols

Provided below are standard protocols that you may find useful for product applications.

- [Western Blot](#)
- [Blocking Peptides](#)
- [Dot Blot](#)
- [Immunohistochemistry](#)
- [Immunofluorescence](#)
- [Immunoprecipitation](#)
- [Flow Cytometry](#)
- [Cell Culture](#)

THAP10 Antibody (N-term) - Images



THAP10 Antibody (N-term) (Cat. #AP18325a) western blot analysis in WiDr cell line lysates (35ug/lane). This demonstrates the THAP10 Antibody detected the THAP10 protein (arrow).

THAP10 Antibody (N-term) - Background

This gene encodes a member of a family of proteins sharing an N-terminal Thanatos-associated domain. The Thanatos-associated domain contains a zinc finger signature similar to DNA-binding domains. This gene is part of a bidirectional gene pair on the long arm of chromosome 15 that is regulated by estrogen and may play a role in breast cancer.

THAP10 Antibody (N-term) - References

- De Souza Santos, E., et al. *Int. J. Oncol.* 33(1):25-31(2008)
Olsen, J.V., et al. *Cell* 127(3):635-648(2006)
Roussigne, M., et al. *Trends Biochem. Sci.* 28(2):66-69(2003)