

MAGEB18 Antibody (Center)
Affinity Purified Rabbit Polyclonal Antibody (Pab)
Catalog # AP18274c

Specification

MAGEB18 Antibody (Center) - Product Information

Application	WB,E
Primary Accession	O96M61
Other Accession	O4R998 , NP_775970.1
Reactivity	Human
Predicted	Monkey
Host	Rabbit
Clonality	Polyclonal
Isotype	Rabbit IgG
Calculated MW	38533
Antigen Region	214-242

MAGEB18 Antibody (Center) - Additional Information

Gene ID 286514

Other Names

Melanoma-associated antigen B18, MAGE-B18 antigen, MAGEB18

Target/Specificity

This MAGEB18 antibody is generated from rabbits immunized with a KLH conjugated synthetic peptide between 214-242 amino acids from the Central region of human MAGEB18.

Dilution

WB~~1:1000

Format

Purified polyclonal antibody supplied in PBS with 0.09% (W/V) sodium azide. This antibody is purified through a protein A column, followed by peptide affinity purification.

Storage

Maintain refrigerated at 2-8°C for up to 2 weeks. For long term storage store at -20°C in small aliquots to prevent freeze-thaw cycles.

Precautions

MAGEB18 Antibody (Center) is for research use only and not for use in diagnostic or therapeutic procedures.

MAGEB18 Antibody (Center) - Protein Information

Name MAGEB18

Function May enhance ubiquitin ligase activity of RING-type zinc finger-containing E3

ubiquitin-protein ligases. Proposed to act through recruitment and/or stabilization of the Ubl-conjugating enzyme (E2) at the E3:substrate complex.

Cellular Location

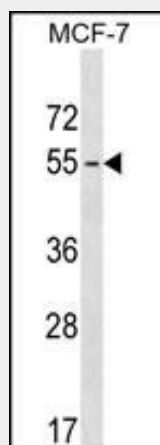
Cytoplasm {ECO:0000250|UniProtKB:Q8BQR7}.

MAGEB18 Antibody (Center) - Protocols

Provided below are standard protocols that you may find useful for product applications.

- [Western Blot](#)
- [Blocking Peptides](#)
- [Dot Blot](#)
- [Immunohistochemistry](#)
- [Immunofluorescence](#)
- [Immunoprecipitation](#)
- [Flow Cytometry](#)
- [Cell Culture](#)

MAGEB18 Antibody (Center) - Images



MAGEB18 Antibody (Center) (Cat. #AP18274c) western blot analysis in MCF-7 cell line lysates (35ug/lane). This demonstrates the MAGEB18 antibody detected the MAGEB18 protein (arrow).

MAGEB18 Antibody (Center) - Background

The function of this protein remains unknown.

MAGEB18 Antibody (Center) - References

- Venkatesan, K., et al. Nat. Methods 6(1):83-90(2009)
Lim, J., et al. Cell 125(4):801-814(2006)