

**DUS2L Antibody (C-term)**  
**Affinity Purified Rabbit Polyclonal Antibody (Pab)**  
**Catalog # AP18265b**

**Specification**

---

**DUS2L Antibody (C-term) - Product Information**

Application	WB,E
Primary Accession	<a href="#">O9NX74</a>
Other Accession	<a href="#">NP_060273.1</a>
Reactivity	Human
Host	Rabbit
Clonality	Polyclonal
Isotype	Rabbit IgG
Calculated MW	55050
Antigen Region	371-397

**DUS2L Antibody (C-term) - Additional Information**

**Gene ID** 54920

**Other Names**

tRNA-dihydrouridine(20) synthase [NAD(P)+]-like, 131-, Dihydrouridine synthase 2, Up-regulated in lung cancer protein 8, URLC8, tRNA-dihydrouridine synthase 2-like, hDUS2, DUS2, DUS2L

**Target/Specificity**

This DUS2L antibody is generated from rabbits immunized with a KLH conjugated synthetic peptide between 371-397 amino acids from the C-terminal region of human DUS2L.

**Dilution**

WB~~1:1000

**Format**

Purified polyclonal antibody supplied in PBS with 0.09% (W/V) sodium azide. This antibody is purified through a protein A column, followed by peptide affinity purification.

**Storage**

Maintain refrigerated at 2-8°C for up to 2 weeks. For long term storage store at -20°C in small aliquots to prevent freeze-thaw cycles.

**Precautions**

DUS2L Antibody (C-term) is for research use only and not for use in diagnostic or therapeutic procedures.

**DUS2L Antibody (C-term) - Protein Information**

**Name** DUS2

**Synonyms** DUS2L

**Function** Catalyzes the NADPH-dependent synthesis of dihydrouridine, a modified base found in the D-loop of most tRNAs (PubMed:[15994936](#), PubMed:[26429968](#), PubMed:[30149704](#), PubMed:[34798057](#), PubMed:[38680565](#)). Specifically modifies U20 in cytoplasmic tRNAs (PubMed:[38680565](#)). Activity depends on the presence of guanosine at position 19 in the tRNA substrate (PubMed:[38680565](#)). Negatively regulates the activation of EIF2AK2/PKR (PubMed:[18096616](#)).

#### **Cellular Location**

Cytoplasm. Endoplasmic reticulum. Note=Mainly at the endoplasmic reticulum.

#### **Tissue Location**

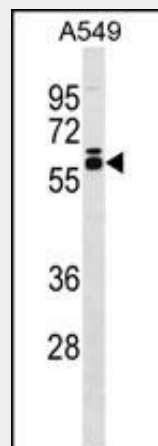
Weak expression in heart, placenta and skeletal muscle. Up-regulated in most lung cancer cells (at protein level)

### **DUS2L Antibody (C-term) - Protocols**

Provided below are standard protocols that you may find useful for product applications.

- [Western Blot](#)
- [Blocking Peptides](#)
- [Dot Blot](#)
- [Immunohistochemistry](#)
- [Immunofluorescence](#)
- [Immunoprecipitation](#)
- [Flow Cytometry](#)
- [Cell Culture](#)

### **DUS2L Antibody (C-term) - Images**



DUS2L Antibody (C-term) (Cat. #AP18265b) western blot analysis in A549 cell line lysates (35ug/lane). This demonstrates the DUS2L antibody detected the DUS2L protein (arrow).

### **DUS2L Antibody (C-term) - Background**

Dihydrouridine synthase catalyzes reduction of the 5,6-double bond of a uridine residue on the displacement loop of tRNA. The resultant modified base, 5,6-dihydrouridine, appears to increase the conformational flexibility and dynamic motion of tRNA (Kato et al., 2005 [PubMed 15994936]).

**DUS2L Antibody (C-term) - References**

- Mittelstadt, M., et al. Nucleic Acids Res. 36(3):998-1008(2008)  
Sugiyama, N., et al. Mol. Cell Proteomics 6(6):1103-1109(2007)  
Lamesch, P., et al. Genomics 89(3):307-315(2007)  
Kato, T., et al. Cancer Res. 65(13):5638-5646(2005)