

**COL20A1 Antibody (C-term)**  
**Affinity Purified Rabbit Polyclonal Antibody (Pab)**  
**Catalog # AP18262B**

**Specification**

---

**COL20A1 Antibody (C-term) - Product Information**

Application	WB,E
Primary Accession	<a href="#">O9P218</a>
Other Accession	<a href="#">NP_065933.2</a>
Reactivity	Human
Host	Rabbit
Clonality	Polyclonal
Isotype	Rabbit IgG
Calculated MW	135830
Antigen Region	1190-1218

**COL20A1 Antibody (C-term) - Additional Information**

**Gene ID** 57642

**Other Names**

Collagen alpha-1(XX) chain, COL20A1, KIAA1510

**Target/Specificity**

This COL20A1 antibody is generated from rabbits immunized with a KLH conjugated synthetic peptide between 1190-1218 amino acids from the C-terminal region of human COL20A1.

**Dilution**

WB~~1:1000

**Format**

Purified polyclonal antibody supplied in PBS with 0.09% (W/V) sodium azide. This antibody is purified through a protein A column, followed by peptide affinity purification.

**Storage**

Maintain refrigerated at 2-8°C for up to 2 weeks. For long term storage store at -20°C in small aliquots to prevent freeze-thaw cycles.

**Precautions**

COL20A1 Antibody (C-term) is for research use only and not for use in diagnostic or therapeutic procedures.

**COL20A1 Antibody (C-term) - Protein Information**

**Name** COL20A1

**Synonyms** KIAA1510

**Function** Probable collagen protein.

**Cellular Location**

Secreted, extracellular space.

**Tissue Location**

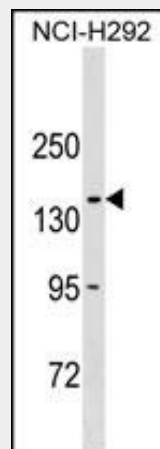
High expression in heart, lung, liver, skeletal muscle, kidney, pancreas, spleen, testis, ovary, subthalamic nucleus and fetal liver. Weak expression in other tissues tested

**COL20A1 Antibody (C-term) - Protocols**

Provided below are standard protocols that you may find useful for product applications.

- [Western Blot](#)
- [Blocking Peptides](#)
- [Dot Blot](#)
- [Immunohistochemistry](#)
- [Immunofluorescence](#)
- [Immunoprecipitation](#)
- [Flow Cytometry](#)
- [Cell Culture](#)

**COL20A1 Antibody (C-term) - Images**



COL20A1 Antibody (C-term) (Cat. #AP18262b) western blot analysis in NCI-H292 cell line lysates (35ug/lane). This demonstrates the COL20A1 antibody detected the COL20A1 protein (arrow).

**COL20A1 Antibody (C-term) - Background**

COL20A1 is a probable collagen protein.

**COL20A1 Antibody (C-term) - References**

Deloukas, P., et al. Nature 414(6866):865-871(2001)