

DRAM Antibody (C-term)
Purified Rabbit Polyclonal Antibody (Pab)
Catalog # AP1825c**Specification**

DRAM Antibody (C-term) - Product Information

Application	IHC-P,E
Primary Accession	Q8N682
Reactivity	Human
Host	Rabbit
Clonality	Polyclonal
Isotype	Rabbit IgG
Antigen Region	176-206

DRAM Antibody (C-term) - Additional Information**Gene ID** 55332**Other Names**

DNA damage-regulated autophagy modulator protein 1, Damage-regulated autophagy modulator, DRAM1, DRAM

Target/Specificity

This DRAM antibody is generated from rabbits immunized with a KLH conjugated synthetic peptide between 176~206 amino acids from the C-terminal region of human DRAM.

Dilution

IHC-P~~1:10~50

Format

Purified polyclonal antibody supplied in PBS with 0.09% (W/V) sodium azide. This antibody is purified through a protein A column, followed by peptide affinity purification.

Storage

Maintain refrigerated at 2-8°C for up to 2 weeks. For long term storage store at -20°C in small aliquots to prevent freeze-thaw cycles.

Precautions

DRAM Antibody (C-term) is for research use only and not for use in diagnostic or therapeutic procedures.

DRAM Antibody (C-term) - Protein Information**Name** DRAM1**Synonyms** DRAM**Function** Lysosomal modulator of autophagy that plays a central role in p53/TP53-mediated

apoptosis. Not involved in p73/TP73-mediated autophagy.

Cellular Location

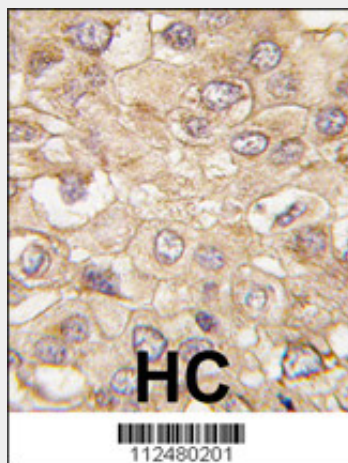
Lysosome membrane; Multi-pass membrane protein

DRAM Antibody (C-term) - Protocols

Provided below are standard protocols that you may find useful for product applications.

- [Western Blot](#)
- [Blocking Peptides](#)
- [Dot Blot](#)
- [Immunohistochemistry](#)
- [Immunofluorescence](#)
- [Immunoprecipitation](#)
- [Flow Cytometry](#)
- [Cell Culture](#)

DRAM Antibody (C-term) - Images



Formalin-fixed and paraffin-embedded human hepatocarcinoma tissue reacted with DRAM Antibody (C-term) (Cat.#AP1825c), which was peroxidase-conjugated to the secondary antibody, followed by DAB staining. This data demonstrates the use of this antibody for immunohistochemistry; clinical relevance has not been evaluated.

DRAM Antibody (C-term) - Background

DRAM is regulated as part of the p53 tumor suppressor pathway. It is a lysosomal membrane protein that is required for the induction of autophagy by the pathway. Decreased transcriptional expression of this protein is associated with various tumors.

DRAM Antibody (C-term) - References

Kerley-Hamilton, J.S., *Biochim. Biophys. Acta* 1769 (4), 209-219 (2007)
Crighton, D., *Autophagy* 3 (1), 72-74 (2007)
Crighton, D., *Cell* 126 (1), 121-134 (2006)
Green, D.R., *Cell* 126 (1), 30-32 (2006)

DRAM Antibody (C-term) - Citations

- [Dual programmed cell death pathways induced by p53 transactivation overcome resistance](#)

[to oncolytic adenovirus in human osteosarcoma cells.](#)