

SGPP2 Antibody (N-term)
Affinity Purified Rabbit Polyclonal Antibody (Pab)
Catalog # AP18254a

Specification

SGPP2 Antibody (N-term) - Product Information

Application	WB,E
Primary Accession	O8IWX5
Other Accession	NP_689599.2
Reactivity	Human
Host	Rabbit
Clonality	Polyclonal
Isotype	Rabbit IgG
Calculated MW	44741
Antigen Region	7-33

SGPP2 Antibody (N-term) - Additional Information

Gene ID 130367

Other Names

Sphingosine-1-phosphate phosphatase 2, SPPase2, Spp2, hSPP2, 313-, Sphingosine-1-phosphatase 2, SGPP2

Target/Specificity

This SGPP2 antibody is generated from rabbits immunized with a KLH conjugated synthetic peptide between 7-33 amino acids from the N-terminal region of human SGPP2.

Dilution

WB~~1:1000

Format

Purified polyclonal antibody supplied in PBS with 0.09% (W/V) sodium azide. This antibody is purified through a protein A column, followed by peptide affinity purification.

Storage

Maintain refrigerated at 2-8°C for up to 2 weeks. For long term storage store at -20°C in small aliquots to prevent freeze-thaw cycles.

Precautions

SGPP2 Antibody (N-term) is for research use only and not for use in diagnostic or therapeutic procedures.

SGPP2 Antibody (N-term) - Protein Information

Name SGPP2 ([HGNC:19953](#))

Function Has specific phosphohydrolase activity towards sphingoid base 1-phosphates. Has high

phosphohydrolase activity against dihydrosphingosine-1-phosphate and sphingosine-1-phosphate (S1P) in vitro (PubMed:[12411432](#)). Sphingosine-1-phosphate phosphatase activity is needed for efficient recycling of sphingosine into the sphingolipid synthesis pathway (By similarity). May play a role in attenuating intracellular sphingosine 1-phosphate (S1P) signaling. May play a role in pro-inflammatory signaling (PubMed:[17113265](#)). Plays a role in the regulation of pancreatic islet beta-cell endoplasmic reticulum stress and proliferation (By similarity).

Cellular Location

Endoplasmic reticulum membrane; Multi-pass membrane protein

Tissue Location

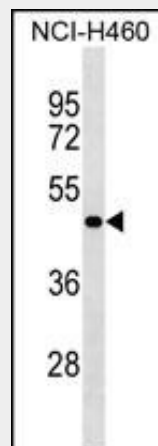
Expressed strongly in kidney and heart, followed by brain, colon, small intestine and lung. Not detected in skeletal muscle, thymus, spleen, liver, placenta, and peripheral blood leukocytes.

SGPP2 Antibody (N-term) - Protocols

Provided below are standard protocols that you may find useful for product applications.

- [Western Blot](#)
- [Blocking Peptides](#)
- [Dot Blot](#)
- [Immunohistochemistry](#)
- [Immunofluorescence](#)
- [Immunoprecipitation](#)
- [Flow Cytometry](#)
- [Cell Culture](#)

SGPP2 Antibody (N-term) - Images



SGPP2 Antibody (N-term) (Cat. #AP18254a) western blot analysis in NCI-H460 cell line lysates (35ug/lane). This demonstrates the SGPP2 antibody detected the SGPP2 protein (arrow).

SGPP2 Antibody (N-term) - Background

Sphingosine-1-phosphate (S1P) is a bioactive sphingolipid metabolite that regulates diverse biologic processes. SGPP2 catalyzes the degradation of S1P (Ogawa et al., 2003 [PubMed 12411432]).

SGPP2 Antibody (N-term) - References

Mechtcheriakova, D., et al. Cell. Signal. 19(4):748-760(2007)
Ogawa, C., et al. J. Biol. Chem. 278(2):1268-1272(2003)