

SGK269 Antibody (N-term)
Affinity Purified Rabbit Polyclonal Antibody (Pab)
Catalog # AP18239a

Specification

SGK269 Antibody (N-term) - Product Information

Application	WB,E
Primary Accession	O9H792
Other Accession	NP_079052.2
Reactivity	Human, Mouse
Host	Rabbit
Clonality	Polyclonal
Isotype	Rabbit IgG
Calculated MW	193106
Antigen Region	673-699

SGK269 Antibody (N-term) - Additional Information

Gene ID 79834

Other Names

Pseudopodium-enriched atypical kinase 1, Sugen kinase 269, Tyrosine-protein kinase SgK269, PEAK1, KIAA2002

Target/Specificity

This SGK269 antibody is generated from rabbits immunized with a KLH conjugated synthetic peptide between 673-699 amino acids from the N-terminal region of human SGK269.

Dilution

WB~~1:1000

Format

Purified polyclonal antibody supplied in PBS with 0.09% (W/V) sodium azide. This antibody is purified through a protein A column, followed by peptide affinity purification.

Storage

Maintain refrigerated at 2-8°C for up to 2 weeks. For long term storage store at -20°C in small aliquots to prevent freeze-thaw cycles.

Precautions

SGK269 Antibody (N-term) is for research use only and not for use in diagnostic or therapeutic procedures.

SGK269 Antibody (N-term) - Protein Information

Name PEAK1

Synonyms KIAA2002

Function Probable catalytically inactive kinase. Scaffolding protein that regulates the cytoskeleton to control cell spreading and migration by modulating focal adhesion dynamics (PubMed:[20534451](#), PubMed:[23105102](#), PubMed:[35687021](#)). Acts as a scaffold for mediating EGFR signaling (PubMed:[23846654](#)).

Cellular Location

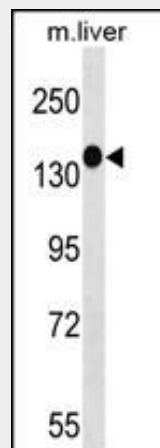
Cytoplasm, cytoskeleton. Cell junction, focal adhesion Note=Colocalizes with F-actin in serum-rich medium (PubMed:[20534451](#)) Actin colocalization is reduced during serum starvation (PubMed:[20534451](#)).

SGK269 Antibody (N-term) - Protocols

Provided below are standard protocols that you may find useful for product applications.

- [Western Blot](#)
- [Blocking Peptides](#)
- [Dot Blot](#)
- [Immunohistochemistry](#)
- [Immunofluorescence](#)
- [Immunoprecipitation](#)
- [Flow Cytometry](#)
- [Cell Culture](#)

SGK269 Antibody (N-term) - Images



SGK269 Antibody (N-term) (Cat. #AP18239a) western blot analysis in mouse liver tissue lysates (35ug/lane). This demonstrates the SGK269 antibody detected the SGK269 protein (arrow).

SGK269 Antibody (N-term) - Background

The function of this protein remains unknown.

SGK269 Antibody (N-term) - References

- Rose, J.E., et al. Mol. Med. 16 (7-8), 247-253 (2010) :
Olsen, J.V., et al. Cell 127(3):635-648(2006)
Olsen, J.V., et al. Cell 127(3):635-648(2006)
Zody, M.C., et al. Nature 440(7084):671-675(2006)
Rush, J., et al. Nat. Biotechnol. 23(1):94-101(2005)