

PPP1R3B Antibody (C-term)
Affinity Purified Rabbit Polyclonal Antibody (Pab)
Catalog # AP18235b

Specification

PPP1R3B Antibody (C-term) - Product Information

Application	WB,E
Primary Accession	Q86XI6
Other Accession	NP_078883.2
Reactivity	Human
Host	Rabbit
Clonality	Polyclonal
Isotype	Rabbit IgG
Calculated MW	32695
Antigen Region	205-231

PPP1R3B Antibody (C-term) - Additional Information

Gene ID 79660

Other Names

Protein phosphatase 1 regulatory subunit 3B, Hepatic glycogen-targeting protein phosphatase 1 regulatory subunit GL, Protein phosphatase 1 regulatory subunit 4, PP1 subunit R4, Protein phosphatase 1 subunit GL, PTG, PPP1R3B, PPP1R4

Target/Specificity

This PPP1R3B antibody is generated from rabbits immunized with a KLH conjugated synthetic peptide between 205-231 amino acids from the C-terminal region of human PPP1R3B.

Dilution

WB~~1:1000

Format

Purified polyclonal antibody supplied in PBS with 0.09% (W/V) sodium azide. This antibody is purified through a protein A column, followed by peptide affinity purification.

Storage

Maintain refrigerated at 2-8°C for up to 2 weeks. For long term storage store at -20°C in small aliquots to prevent freeze-thaw cycles.

Precautions

PPP1R3B Antibody (C-term) is for research use only and not for use in diagnostic or therapeutic procedures.

PPP1R3B Antibody (C-term) - Protein Information

Name PPP1R3B

Synonyms PPP1R4

Function Acts as a glycogen-targeting subunit for phosphatase PP1. Facilitates interaction of the PP1 with enzymes of the glycogen metabolism and regulates its activity. Suppresses the rate at which PP1 dephosphorylates (inactivates) glycogen phosphorylase and enhances the rate at which it activates glycogen synthase and therefore limits glycogen breakdown. Its activity is inhibited by PYGL, resulting in inhibition of the glycogen synthase and glycogen phosphorylase phosphatase activities of PP1. Dramatically increases basal and insulin-stimulated glycogen synthesis upon overexpression in hepatocytes (By similarity).

Tissue Location

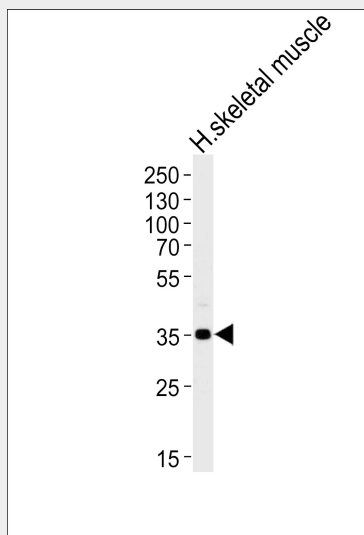
Highly expressed in the liver and, at lower levels, in skeletal muscle, including in vastus lateralis, gastrocnemius and soleus (at protein level). Highest mRNA levels are observed in skeletal muscle, and only moderate levels in liver and heart. Weak expression in placenta and lung.

PPP1R3B Antibody (C-term) - Protocols

Provided below are standard protocols that you may find useful for product applications.

- [Western Blot](#)
- [Blocking Peptides](#)
- [Dot Blot](#)
- [Immunohistochemistry](#)
- [Immunofluorescence](#)
- [Immunoprecipitation](#)
- [Flow Cytometry](#)
- [Cell Culture](#)

PPP1R3B Antibody (C-term) - Images



Western blot analysis of lysate from human skeletal muscle tissue lysate, using PPP1R3B Antibody (C-term)(Cat. #AP18235b). AP18235b was diluted at 1:1000 at each lane. A goat anti-rabbit IgG H&L(HRP) at 1:5000 dilution was used as the secondary antibody. Lysate at 35ug per lane.

PPP1R3B Antibody (C-term) - Background

The protein phosphatase-1 (PP1) catalytic subunit (PPP1CA; MIM 176875) is regulated by targeting subunits, such as PP1R3B. PP1R3B suppresses the rate at which PP1 dephosphorylates (i.e., inactivates) glycogen phosphorylase (see PYGL; MIM 232700) and enhances the rate at which it activates glycogen synthase (see GYS2; MIM 138571) (Doherty et al., 1995 [PubMed 7498521]).[supplied by OMIM].

PPP1R3B Antibody (C-term) - References

Montori-Grau, M., et al. Biochem. J. 405(1):107-113(2007)
Lamesch, P., et al. Genomics 89(3):307-315(2007)
Ceulemans, H., et al. Bioessays 24(4):371-381(2002)
Doherty, M.J., et al. FEBS Lett. 375(3):294-298(1995)