

ATG7 Antibody
Purified Rabbit Polyclonal Antibody (Pab)
Catalog # AP1813C

Specification

ATG7 Antibody - Product Information

Application	WB, IHC-P, IF,E
Primary Accession	O95352
Other Accession	Q641Y5 , Q9D906
Reactivity	Human, Mouse
Predicted	Rat
Host	Rabbit
Clonality	Polyclonal
Isotype	Rabbit IgG
Antigen Region	494-523

ATG7 Antibody - Additional Information

Gene ID 10533

Other Names

Ubiquitin-like modifier-activating enzyme ATG7, ATG12-activating enzyme E1 ATG7, Autophagy-related protein 7, APG7-like, hAGP7, Ubiquitin-activating enzyme E1-like protein, ATG7, APG7L

Target/Specificity

This ATG7 antibody is generated from rabbits immunized with a KLH conjugated synthetic peptide between 494-523 amino acids from human ATG7.

Dilution

WB~~1:1000
IHC-P~~1:25
IF~~1:200

Format

Purified polyclonal antibody supplied in PBS with 0.09% (W/V) sodium azide. This antibody is purified through a protein A column, followed by peptide affinity purification.

Storage

Maintain refrigerated at 2-8°C for up to 2 weeks. For long term storage store at -20°C in small aliquots to prevent freeze-thaw cycles.

Precautions

ATG7 Antibody is for research use only and not for use in diagnostic or therapeutic procedures.

ATG7 Antibody - Protein Information

Name ATG7 ([HGNC:16935](#))

Synonyms APG7L

Function E1-like activating enzyme involved in the 2 ubiquitin-like systems required for cytoplasm to vacuole transport (Cvt) and autophagy. Activates ATG12 for its conjugation with ATG5 as well as the ATG8 family proteins for their conjugation with phosphatidylethanolamine. Both systems are needed for the ATG8 association to Cvt vesicles and autophagosomal membranes. Required for autophagic death induced by caspase-8 inhibition. Facilitates LC3-I lipidation with phosphatidylethanolamine to form LC3-II which is found on autophagosomal membranes (PubMed:[34161705](#)). Required for mitophagy which contributes to regulate mitochondrial quantity and quality by eliminating the mitochondria to a basal level to fulfill cellular energy requirements and preventing excess ROS production. Modulates p53/TP53 activity to regulate cell cycle and survival during metabolic stress. Also plays a key role in the maintenance of axonal homeostasis, the prevention of axonal degeneration, the maintenance of hematopoietic stem cells, the formation of Paneth cell granules, as well as in adipose differentiation. Plays a role in regulating the liver clock and glucose metabolism by mediating the autophagic degradation of CRY1 (clock repressor) in a time-dependent manner (By similarity).

Cellular Location

Cytoplasm. Preautophagosomal structure. Note=Localizes also to discrete punctae along the ciliary axoneme and to the base of the ciliary axoneme

Tissue Location

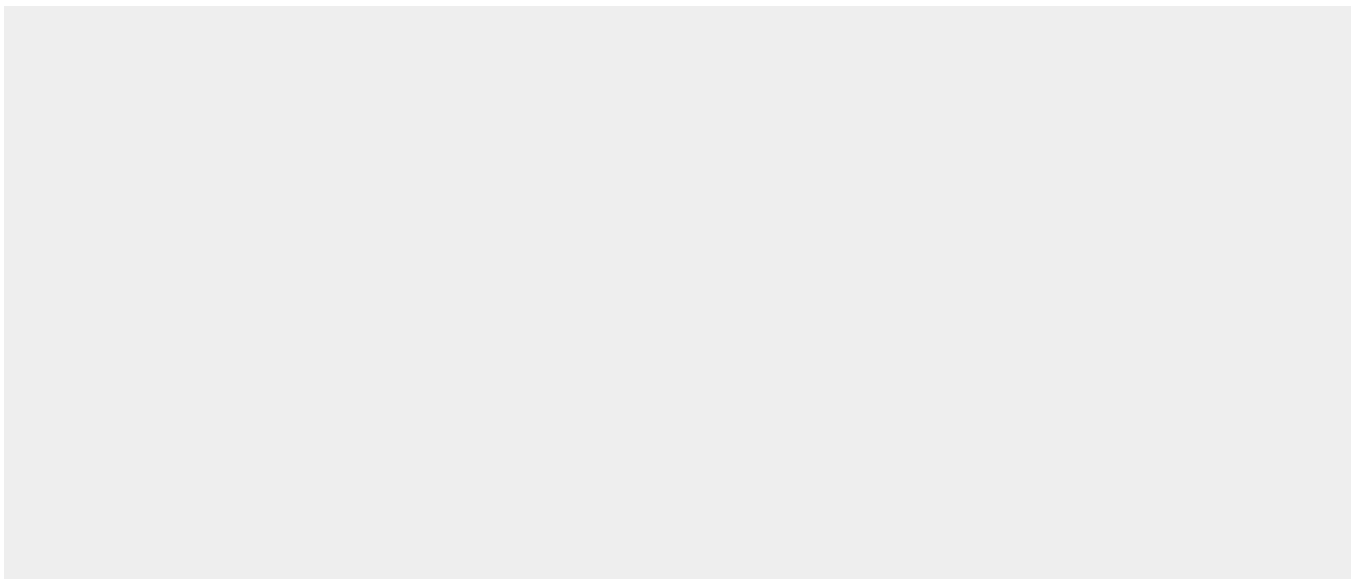
Widely expressed, especially in kidney, liver, lymph nodes and bone marrow.

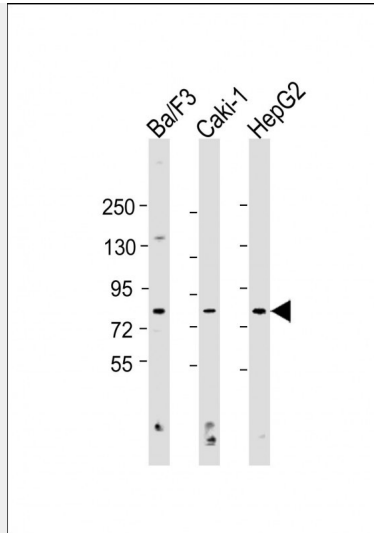
ATG7 Antibody - Protocols

Provided below are standard protocols that you may find useful for product applications.

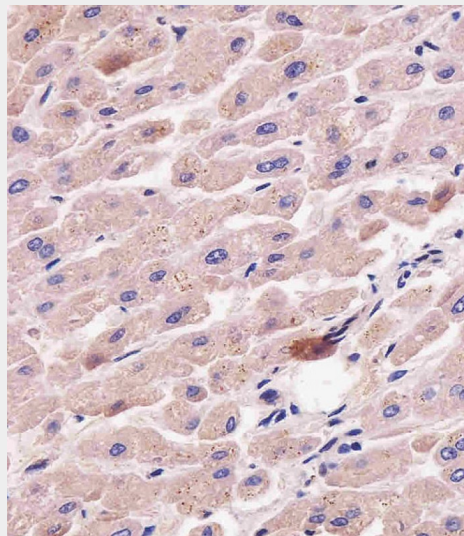
- [Western Blot](#)
- [Blocking Peptides](#)
- [Dot Blot](#)
- [Immunohistochemistry](#)
- [Immunofluorescence](#)
- [Immunoprecipitation](#)
- [Flow Cytometry](#)
- [Cell Culture](#)

ATG7 Antibody - Images

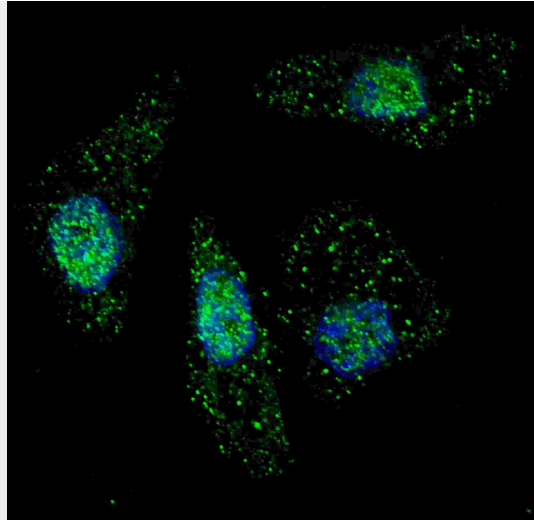




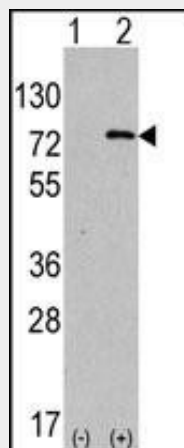
All lanes : Anti-APG7L Antibody (R509) at 1:1000 dilution Lane 1: Ba/F3 whole cell lysate Lane 2: Caki-1 whole cell lysate Lane 3: HepG2 whole cell lysate Lysates/proteins at 20 µg per lane. Secondary Goat Anti-Rabbit IgG, (H+L), Peroxidase conjugated at 1/10000 dilution. Predicted band size : 78 kDa Blocking/Dilution buffer: 5% NFDm/TBST.



AP1813C staining APG7L in human liver tissue sections by Immunohistochemistry (IHC-P - paraformaldehyde-fixed, paraffin-embedded sections). Tissue was fixed with formaldehyde and blocked with 3% BSA for 0.5 hour at room temperature; antigen retrieval was by heat mediation with a citrate buffer (pH6). Samples were incubated with primary antibody (1/25) for 1 hours at 37°C. A undiluted biotinylated goat polyvalent antibody was used as the secondary antibody.



Fluorescent image of U251 cells stained with ATG7 antibody. U251 cells were treated with Chloroquine (50 μ M, 16h), then fixed with 4% PFA (20 min), permeabilized with Triton X-100 (0.2%, 30 min). Cells were then incubated with AP1813c ATG7 primary antibody (1:200, 2 h at room temperature). For secondary antibody, Alexa Fluor® 488 conjugated donkey anti-rabbit antibody (green) was used (1:1000, 1h). Nuclei were counterstained with Hoechst 33342 (blue) (10 μ g/ml, 5 min). ATG7 immunoreactivity is localized to autophagic vacuoles in the cytoplasm of U251 cells, supported by Human Protein Atlas Data (<http://www.proteinatlas.org/ENSG00000197548>).



Western blot analysis of anti-hAPG7L-R509 Pab (Cat. #AP1813c) in 293 cell line lysates transiently transfected with the ATG7 gene (2ug/lane). hAPG7L-R509 (arrow) was detected using the purified Pab.

ATG7 Antibody - Background

Macroautophagy is the major inducible pathway for the general turnover of cytoplasmic constituents in eukaryotic cells, it is also responsible for the degradation of active cytoplasmic enzymes and organelles during nutrient starvation. Macroautophagy involves the formation of double-membrane bound autophagosomes which enclose the cytoplasmic constituent targeted for degradation in a membrane bound structure, which then fuse with the lysosome (or vacuole) releasing a single-membrane bound autophagic bodies which are then degraded within the lysosome (or vacuole). APG7 functions as an E1 enzyme essential for multsubstrates such as GABARAPL1 and ATG12. APG3L is an E2-like conjugating enzyme facilitating covalent binding of APG8 (MAP1LC3) to phosphatidylethanolamine (PE). APG7 (an E1-like enzyme) facilitates this reaction by forming an E1-E2 complex with APG3. Formation of the PE conjugate is essential for autophagy.

ATG7 Antibody - References

References for protein:

1. Baehrecke EH. Nat Rev Mol Cell Biol. 6(6):505-10. (2005)
2. Lum JJ, et al. Nat Rev Mol Cell Biol. 6(6):439-48. (2005)
3. Greenberg JT. Dev Cell. 8(6):799-801. (2005)
4. Levine B. Cell. 120(2):159-62. (2005)
5. Shintani T and Klionsky DJ. Science. 306(5698):990-5. (2004)
6. Tanida I., et al. Biochem. Biophys. Res. Commun. 292:256-262(2002)
7. Tanida I., et al. J. Biol. Chem. 277:13739-13744(2002)

References for U251 cell line:

1. Westermark B.; Pontén J.; Hugosson R. (1973). "Determinants for the establishment of permanent tissue culture lines from human gliomas". Acta Pathol Microbiol Scand A. 81:791-805. [PMID: 4359449].
2. Pontén, J., Westermark B. (1978). "Properties of Human Malignant Glioma Cells in Vitro". Medical Biology 56: 184-193.[PMID: 359950].
3. Geng Y.; Kohli L.; Klocke B.J.; Roth K.A.(2010). "Chloroquine-induced autophagic vacuole accumulation and cell death in glioma cells is p53 independent". Neuro Oncol. 12(5): 473-481.[PMID: 20406898].

ATG7 Antibody - Citations

- [Deficient tRNA posttranscription modification dysregulated the mitochondrial quality controls and apoptosis](#)
- [The lysosomal membrane protein Sidt2 is a vital regulator of mitochondrial quality control in skeletal muscle](#)
- [Baicalin reversal of DNA hypermethylation-associated Klotho suppression ameliorates renal injury in type 1 diabetic mouse model](#)
- [Autophagy mediates cell cycle response by regulating nucleocytoplasmic transport of PAX6 in limbal stem cells under ultraviolet-A stress.](#)
- [Curcumin induces apoptotic cell death and protective autophagy in human gastric cancer cells.](#)
- [Cepharanthine Induces Autophagy, Apoptosis and Cell Cycle Arrest in Breast Cancer Cells.](#)
- [Noncanonical Fungal Autophagy Inhibits Inflammation in Response to IFN- \$\gamma\$ via DAPK1.](#)
- [Induction of an incomplete autophagic response by cancer-preventive geranylgeranoic acid \(GGA\) in a human hepatoma-derived cell line.](#)
- [Therapeutic potential of a synthetic lethal interaction between the MYC proto-oncogene and inhibition of aurora-B kinase.](#)
- [Energy restriction as an antitumor target of thiazolidinediones.](#)
- [A novel protein complex in membrane rafts linking the NR2B glutamate receptor and autophagy is disrupted following traumatic brain injury.](#)
- [Association of autophagy defect with a malignant phenotype and poor prognosis of hepatocellular carcinoma.](#)
- [A plant triterpenoid, avicin D, induces autophagy by activation of AMP-activated protein kinase.](#)