

**MDH2 Antibody (C-term)**  
**Affinity Purified Rabbit Polyclonal Antibody (Pab)**  
**Catalog # AP18138b****Specification**

---

**MDH2 Antibody (C-term) - Product Information**

Application	WB,E
Primary Accession	<a href="#">P40926</a>
Other Accession	<a href="#">O4R568</a> , <a href="#">NP_005909.2</a>
Reactivity	Human
Predicted	Monkey
Host	Rabbit
Clonality	Polyclonal
Isotype	Rabbit IgG
Calculated MW	35503
Antigen Region	297-326

**MDH2 Antibody (C-term) - Additional Information****Gene ID** 4191**Other Names**

Malate dehydrogenase, mitochondrial, MDH2

**Target/Specificity**

This MDH2 antibody is generated from rabbits immunized with a KLH conjugated synthetic peptide between 297-326 amino acids from the C-terminal region of human MDH2.

**Dilution**

WB~~1:1000

**Format**

Purified polyclonal antibody supplied in PBS with 0.09% (W/V) sodium azide. This antibody is purified through a protein A column, followed by peptide affinity purification.

**Storage**

Maintain refrigerated at 2-8°C for up to 2 weeks. For long term storage store at -20°C in small aliquots to prevent freeze-thaw cycles.

**Precautions**

MDH2 Antibody (C-term) is for research use only and not for use in diagnostic or therapeutic procedures.

**MDH2 Antibody (C-term) - Protein Information****Name** MDH2**Cellular Location**

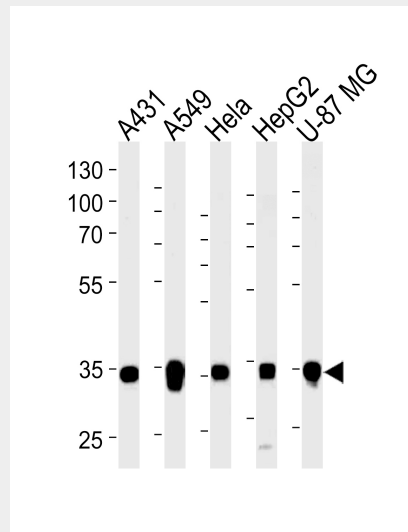
Mitochondrion matrix {ECO:0000250|UniProtKB:P04636}

### MDH2 Antibody (C-term) - Protocols

Provided below are standard protocols that you may find useful for product applications.

- [Western Blot](#)
- [Blocking Peptides](#)
- [Dot Blot](#)
- [Immunohistochemistry](#)
- [Immunofluorescence](#)
- [Immunoprecipitation](#)
- [Flow Cytometry](#)
- [Cell Culture](#)

### MDH2 Antibody (C-term) - Images



Western blot analysis of lysates from A431, A549, HeLa, HepG2, U-87 MG cell line (from left to right), using MDH2 Antibody (C-term)(Cat. #AP18138b). AP18138b was diluted at 1:1000 at each lane. A goat anti-rabbit IgG H&L(HRP) at 1:5000 dilution was used as the secondary antibody. Lysates at 35ug per lane.

### MDH2 Antibody (C-term) - Background

Malate dehydrogenase catalyzes the reversible oxidation of malate to oxaloacetate, utilizing the NAD/NADH cofactor system in the citric acid cycle. The protein encoded by this gene is localized to the mitochondria and may play pivotal roles in the malate-aspartate shuttle that operates in the metabolic coordination between cytosol and mitochondria. [provided by RefSeq].

### MDH2 Antibody (C-term) - References

- Rose, J. Phd, et al. Mol. Med. (2010) In press :  
Rzem, R., et al. J. Inherit. Metab. Dis. 30(5):681-689(2007)  
Luo, C., et al. J. Biochem. Biophys. Methods 68(2):101-111(2006)

Kullberg, M., et al. Mol. Biol. Evol. 23(8):1493-1503(2006)  
Andersen, J.S., et al. Nature 433(7021):77-83(2005)