

**GTF2I Antibody (N-term)**  
**Affinity Purified Rabbit Polyclonal Antibody (Pab)**  
**Catalog # AP18119a**

**Specification**

---

**GTF2I Antibody (N-term) - Product Information**

Application	IF, WB,E
Primary Accession	<a href="#">P78347</a>
Other Accession	<a href="#">Q5U2Y1</a> , <a href="#">O9ESZ8</a> , <a href="#">NP_001157108.1</a>
Reactivity	Human
Predicted	Mouse, Rat
Host	Rabbit
Clonality	Polyclonal
Isotype	Rabbit IgG
Calculated MW	112416
Antigen Region	281-310

**GTF2I Antibody (N-term) - Additional Information**

**Gene ID** 2969

**Other Names**

General transcription factor II-I, GTFII-I, TFII-I, Bruton tyrosine kinase-associated protein 135, BAP-135, BTK-associated protein 135, SRF-Phox1-interacting protein, SPIN, Williams-Beuren syndrome chromosomal region 6 protein, GTF2I, BAP135, WBSCR6

**Target/Specificity**

This GTF2I antibody is generated from rabbits immunized with a KLH conjugated synthetic peptide between 281-310 amino acids from the N-terminal region of human GTF2I.

**Dilution**

IF~~1:10~50

WB~~1:1000

**Format**

Purified polyclonal antibody supplied in PBS with 0.09% (W/V) sodium azide. This antibody is purified through a protein A column, followed by peptide affinity purification.

**Storage**

Maintain refrigerated at 2-8°C for up to 2 weeks. For long term storage store at -20°C in small aliquots to prevent freeze-thaw cycles.

**Precautions**

GTF2I Antibody (N-term) is for research use only and not for use in diagnostic or therapeutic procedures.

**GTF2I Antibody (N-term) - Protein Information**

**Name** GTF2I

**Synonyms** BAP135, WBSCR6

**Function** Interacts with the basal transcription machinery by coordinating the formation of a multiprotein complex at the C-FOS promoter, and linking specific signal responsive activator complexes. Promotes the formation of stable high-order complexes of SRF and PHOX1 and interacts cooperatively with PHOX1 to promote serum-inducible transcription of a reporter gene driven by the C-FOS serum response element (SRE). Acts as a coregulator for USF1 by binding independently two promoter elements, a pyrimidine-rich initiator (Inr) and an upstream E-box. Required for the formation of functional ARID3A DNA- binding complexes and for activation of immunoglobulin heavy-chain transcription upon B-lymphocyte activation.

**Cellular Location**

Cytoplasm. Nucleus {ECO:0000255|PROSITE-ProRule:PRU00484, ECO:0000269|PubMed:10373551} Note=Colocalizes with BTK in the cytoplasm

**Tissue Location**

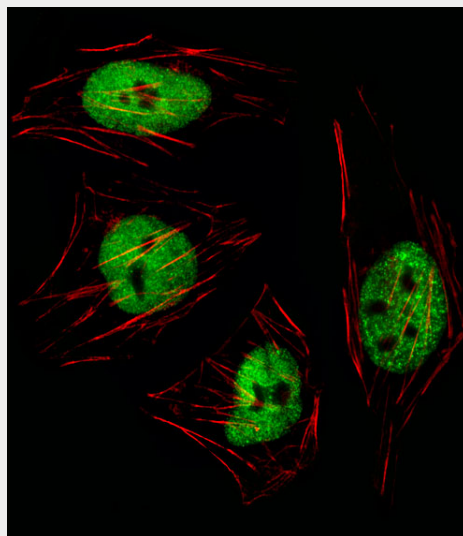
Ubiquitous. Isoform 1 is strongly expressed in fetal brain, weakly in adult brain, muscle, and lymphoblasts and is almost undetectable in other adult tissues, while the other isoforms are equally expressed in all adult tissues

**GTF2I Antibody (N-term) - Protocols**

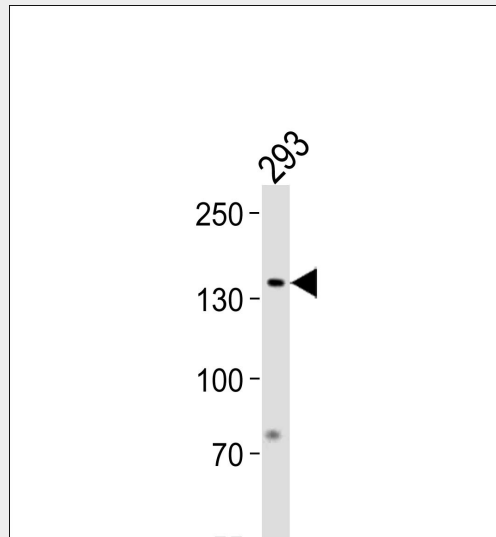
Provided below are standard protocols that you may find useful for product applications.

- [Western Blot](#)
- [Blocking Peptides](#)
- [Dot Blot](#)
- [Immunohistochemistry](#)
- [Immunofluorescence](#)
- [Immunoprecipitation](#)
- [Flow Cytometry](#)
- [Cell Culture](#)

**GTF2I Antibody (N-term) - Images**



Fluorescent image of HeLa cell stained with GTF2I Antibody (N-term)(Cat#AP18119a/SA111012BI).Hela cells were fixed with 4% PFA (20 min), permeabilized with Triton X-100 (0.1%, 10 min), then incubated with GTF2I primary antibody (1:25, 1 h at 37°C). For secondary antibody, Alexa Fluor® 488 conjugated donkey anti-rabbit antibody (green) was used (1:400, 50 min at 37°C).Cytoplasmic actin was counterstained with Alexa Fluor® 555 (red) conjugated Phalloidin (7units/ml, 1 h at 37°C). GTF2I immunoreactivity is localized to Nucleus significantly.



GTF2I Antibody (N-term) (Cat. #AP18119a) western blot analysis in 293 cell line lysates (35ug/lane).This demonstrates the GTF2I antibody detected the GTF2I protein (arrow).

#### **GTF2I Antibody (N-term) - Background**

This gene encodes a multifunctional phosphoprotein with roles in transcription and signal transduction. It is deleted in Williams-Beuren syndrome, a multisystem developmental disorder caused by the deletion of contiguous genes at chromosome 7q11.23. Alternative splicing results in multiple transcript variants. Related pseudogenes have been identified on chromosomes 7, 13 and 21.

#### **GTF2I Antibody (N-term) - References**

Antonell, A., et al. J. Med. Genet. 47(5):312-320(2010)  
Lazebnik, M.B., et al. J. Biol. Chem. 284(52):36234-36239(2009)  
Sacristan, C., et al. Eur. J. Immunol. 39(9):2584-2595(2009)  
Makeyev, A.V., et al. Gene 433 (1-2), 16-25 (2009) :  
Olsen, J.V., et al. Cell 127(3):635-648(2006)