

**LC3 Antibody (APG8B) (C-term)**  
**Purified Rabbit Polyclonal Antibody (Pab)**  
**Catalog # AP1802b**

**Specification**

---

**LC3 Antibody (APG8B) (C-term) - Product Information**

Application	<b>WB, IHC-P,E</b>
Primary Accession	<a href="#">O9GZQ8</a>
Other Accession	<a href="#">A6NCE7</a>
Reactivity	<b>Human</b>
Host	<b>Rabbit</b>
Clonality	<b>Polyclonal</b>
Isotype	<b>Rabbit IgG</b>
Antigen Region	<b>77-106</b>

**LC3 Antibody (APG8B) (C-term) - Additional Information**

**Gene ID** 81631

**Other Names**

Microtubule-associated proteins 1A/1B light chain 3B, Autophagy-related protein LC3 B, Autophagy-related ubiquitin-like modifier LC3 B, MAP1 light chain 3-like protein 2, MAP1A/MAP1B light chain 3 B, MAP1A/MAP1B LC3 B, Microtubule-associated protein 1 light chain 3 beta, MAP1LC3B, MAP1ALC3

**Target/Specificity**

This LC3 antibody is generated from rabbits immunized with a KLH conjugated synthetic peptide between 77-106 amino acids from the C-terminal region of human LC3.

**Dilution**

WB~~1:1000  
IHC-P~~1:50~100

**Format**

Purified polyclonal antibody supplied in PBS with 0.09% (W/V) sodium azide. This antibody is prepared by Saturated Ammonium Sulfate (SAS) precipitation followed by dialysis against PBS.

**Storage**

Maintain refrigerated at 2-8°C for up to 2 weeks. For long term storage store at -20°C in small aliquots to prevent freeze-thaw cycles.

**Precautions**

LC3 Antibody (APG8B) (C-term) is for research use only and not for use in diagnostic or therapeutic procedures.

**LC3 Antibody (APG8B) (C-term) - Protein Information**

**Name** MAP1LC3B ([HGNC:13352](#))

## Synonyms MAP1ALC3

**Function** Ubiquitin-like modifier involved in formation of autophagosomal vacuoles (autophagosomes) (PubMed:[20418806](#), PubMed:[23209295](#), PubMed:[28017329](#)). Plays a role in mitophagy which contributes to regulate mitochondrial quantity and quality by eliminating the mitochondria to a basal level to fulfill cellular energy requirements and preventing excess ROS production (PubMed:[23209295](#), PubMed:[28017329](#)). In response to cellular stress and upon mitochondria fission, binds C-18 ceramides and anchors autophagolysosomes to outer mitochondrial membranes to eliminate damaged mitochondria (PubMed:[22922758](#)). While LC3s are involved in elongation of the phagophore membrane, the GABARAP/GATE-16 subfamily is essential for a later stage in autophagosome maturation (PubMed:[20418806](#), PubMed:[23209295](#), PubMed:[28017329](#)). Promotes primary ciliogenesis by removing OFD1 from centriolar satellites via the autophagic pathway (PubMed:[24089205](#)). Through its interaction with the reticulophagy receptor TEX264, participates in the remodeling of subdomains of the endoplasmic reticulum into autophagosomes upon nutrient stress, which then fuse with lysosomes for endoplasmic reticulum turnover (PubMed:[31006537](#), PubMed:[31006538](#)). Upon nutrient stress, directly recruits cofactor JMY to the phagophore membrane surfaces and promotes JMY's actin nucleation activity and autophagosome biogenesis during autophagy (PubMed:[30420355](#)).

## Cellular Location

Cytoplasmic vesicle, autophagosome membrane; Lipid-anchor Endomembrane system; Lipid-anchor Mitochondrion membrane; Lipid-anchor. Cytoplasm, cytoskeleton {ECO:0000250|UniProtKB:Q9CQV6}. Cytoplasmic vesicle. Note=LC3-II binds to the autophagic membranes. LC3-II localizes with the mitochondrial inner membrane during Parkin-mediated mitophagy (PubMed:[28017329](#)). Localizes also to discrete punctae along the ciliary axoneme

## Tissue Location

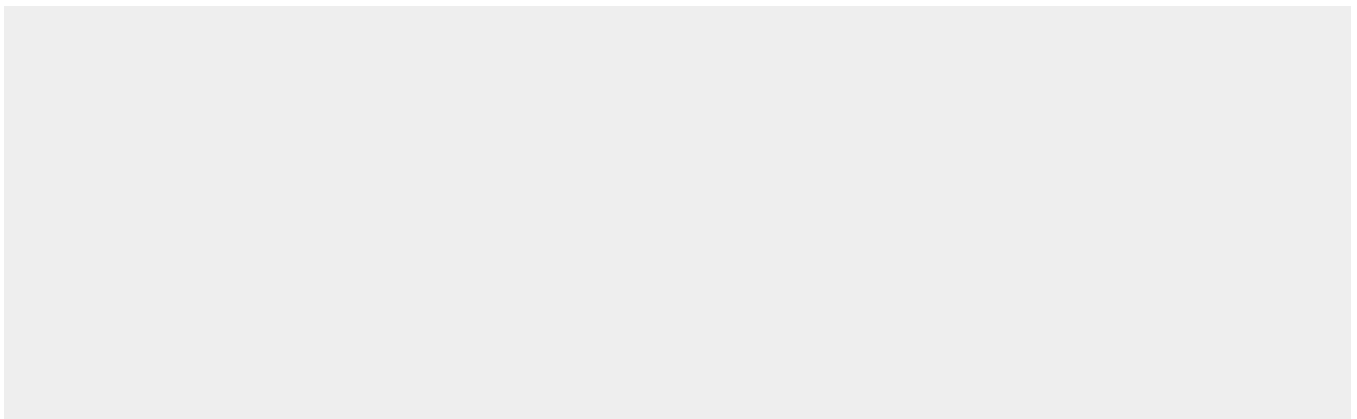
Most abundant in heart, brain, skeletal muscle and testis. Little expression observed in liver

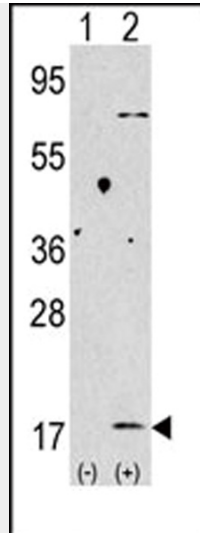
## LC3 Antibody (APG8B) (C-term) - Protocols

Provided below are standard protocols that you may find useful for product applications.

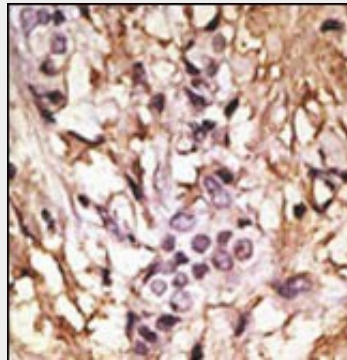
- [Western Blot](#)
- [Blocking Peptides](#)
- [Dot Blot](#)
- [Immunohistochemistry](#)
- [Immunofluorescence](#)
- [Immunoprecipitation](#)
- [Flow Cytometry](#)
- [Cell Culture](#)

## LC3 Antibody (APG8B) (C-term) - Images

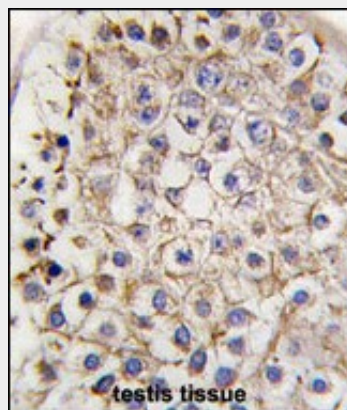




Western blot analysis of anti-LC3 (APG8b) Pab (Cat. #AP1802b) in 293 cell line lysates transiently transfected with the LC3 (APG8b) gene (2ug/lane). LC3 (APG8b) (arrow) was detected using the purified Pab.



Formalin-fixed and paraffin-embedded human cancer tissue reacted with the primary antibody, which was peroxidase-conjugated to the secondary antibody, followed by DAB staining. This data demonstrates the use of this antibody for immunohistochemistry; clinical relevance has not been evaluated. BC = breast carcinoma; HC = hepatocarcinoma.



Formalin-fixed and paraffin-embedded human testis tissue reacted with Autophagy LC3 antibody (APG8b) (C-term) (Cat.#AP1802b), which was peroxidase-conjugated to the secondary antibody, followed by DAB staining. This data demonstrates the use of this antibody for immunohistochemistry; clinical relevance has not been evaluated.

**LC3 Antibody (APG8B) (C-term) - Background**

Macroautophagy is the major inducible pathway for the general turnover of cytoplasmic constituents in eukaryotic cells, it is also responsible for the degradation of active cytoplasmic enzymes and organelles during nutrient starvation. Macroautophagy involves the formation of double-membrane bound autophagosomes which enclose the cytoplasmic constituent targeted for degradation in a membrane bound structure, which then fuse with the lysosome (or vacuole) releasing a single-membrane bound autophagic bodies which are then degraded within the lysosome (or vacuole). MAP1A and MAP1B are microtubule-associated proteins which mediate the physical interactions between microtubules and components of the cytoskeleton. These proteins are involved in formation of autophagosomal vacuoles (autophagosomes). MAP1A and MAP1B each consist of a heavy chain subunit and multiple light chain subunits. MAP1LC3b is one of the light chain subunits and can associate with either MAP1A or MAP1B. The precursor molecule is cleaved by APG4B/ATG4B to form the cytosolic form, LC3-I. This is activated by APG7L/ATG7, transferred to ATG3 and conjugated to phospholipid to form the membrane-bound form, LC3-II.

### LC3 Antibody (APG8B) (C-term) - References

Baehrecke EH. Nat Rev Mol Cell Biol. 6(6):505-10. (2005) Lum JJ, et al. Nat Rev Mol Cell Biol. 6(6):439-48. (2005) Greenberg JT. Dev Cell. 8(6):799-801. (2005) Levine B. Cell. 120(2):159-62. (2005) Shintani T and Klionsky DJ. Science. 306(5698):990-5. (2004) Tanida I., et al. Int. J. Biochem. Cell Biol. 36:2503-2518(2004) He H., et al. J. Biol. Chem. 278:29278-29287(2003) Tanida I., et al. J. Biol. Chem. 279:36268-36276(2004)

### LC3 Antibody (APG8B) (C-term) - Citations

- [NBM-BMX, an HDAC8 Inhibitor, Overcomes Temozolomide Resistance in Glioblastoma Multiforme by Downregulating the  \$\beta\$ -Catenin/c-Myc/SOX2 Pathway and Upregulating p53-Mediated MGMT Inhibition.](#)
- [p65/RelA-Ser529 NF- \$\kappa\$ B subunit phosphorylation induces autophagic astroglial death \(Clasmatodendrosis\) following status epilepticus.](#)
- [p62, Ref\(2\)P and ubiquitinated proteins are conserved markers of neuronal aging, aggregate formation and progressive autophagic defects.](#)
- [Parkinson's disease involves autophagy and abnormal distribution of cathepsin L.](#)
- [Knockdown of the DNA-dependent protein kinase catalytic subunit radiosensitizes glioma-initiating cells by inducing autophagy.](#)
- [Integrating multiple aspects of mitochondrial dynamics in neurons: age-related differences and dynamic changes in a chronic rotenone model.](#)
- [Functional evidence implicating a novel TOR1A mutation in idiopathic, late-onset focal dystonia.](#)
- [Regulation of the autophagy protein LC3 by phosphorylation.](#)
- [Therapeutic potential of a synthetic lethal interaction between the MYC proto-oncogene and inhibition of aurora-B kinase.](#)
- [A novel quantitative flow cytometry-based assay for autophagy.](#)
- [Helicobacter pylori impairs murine dendritic cell responses to infection.](#)
- [Autophagy is a protective mechanism in normal cartilage, and its aging-related loss is linked with cell death and osteoarthritis.](#)
- [Acquired cisplatin resistance in human lung adenocarcinoma cells is associated with enhanced autophagy.](#)