

**MYEOV Antibody (Center)**  
**Affinity Purified Rabbit Polyclonal Antibody (Pab)**  
**Catalog # AP18014C**

**Specification**

---

**MYEOV Antibody (Center) - Product Information**

Application	WB,E
Primary Accession	<a href="#">O96EZ4</a>
Other Accession	<a href="#">NP_620123.2</a>
Reactivity	Human
Host	Rabbit
Clonality	Polyclonal
Isotype	Rabbit IgG
Calculated MW	33556
Antigen Region	87-116

**MYEOV Antibody (Center) - Additional Information**

**Gene ID** 26579

**Other Names**

Myeloma-overexpressed gene protein, Oncogene in multiple myeloma, MYEOV, OCIM

**Target/Specificity**

This MYEOV antibody is generated from rabbits immunized with a KLH conjugated synthetic peptide between 87-116 amino acids from the Central region of human MYEOV.

**Dilution**

WB~~1:1000

**Format**

Purified polyclonal antibody supplied in PBS with 0.09% (W/V) sodium azide. This antibody is purified through a protein A column, followed by peptide affinity purification.

**Storage**

Maintain refrigerated at 2-8°C for up to 2 weeks. For long term storage store at -20°C in small aliquots to prevent freeze-thaw cycles.

**Precautions**

MYEOV Antibody (Center) is for research use only and not for use in diagnostic or therapeutic procedures.

**MYEOV Antibody (Center) - Protein Information**

**Name** MYEOV

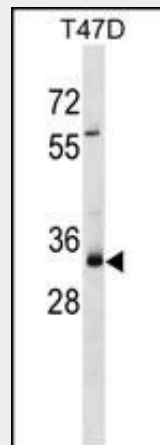
**Synonyms** OCIM

## MYEOV Antibody (Center) - Protocols

Provided below are standard protocols that you may find useful for product applications.

- [Western Blot](#)
- [Blocking Peptides](#)
- [Dot Blot](#)
- [Immunohistochemistry](#)
- [Immunofluorescence](#)
- [Immunoprecipitation](#)
- [Flow Cytometry](#)
- [Cell Culture](#)

## MYEOV Antibody (Center) - Images



MYEOV Antibody (Center) (Cat. #AP18014c) western blot analysis in T47D cell line lysates (35ug/lane). This demonstrates the MYEOV antibody detected the MYEOV protein (arrow).

## MYEOV Antibody (Center) - Background

The function of this protein remains unknown.

## MYEOV Antibody (Center) - References

- Turnbull, C., et al. Nat. Genet. 42(6):504-507(2010)  
Lawlor, G., et al. J. Exp. Clin. Cancer Res. 29, 81 (2010) :  
Gudmundsson, J., et al. Nat. Genet. 41(10):1122-1126(2009)  
Eeles, R.A., et al. Nat. Genet. 41(10):1116-1121(2009)  
Eeles, R.A., et al. Nat. Genet. 40(3):316-321(2008)