

RIP140 Antibody (Center)
Affinity Purified Rabbit Polyclonal Antibody (Pab)
Catalog # AP17991c

Specification

RIP140 Antibody (Center) - Product Information

Application	WB,E
Primary Accession	P48552
Other Accession	NP_003480.2
Reactivity	Human
Host	Rabbit
Clonality	Polyclonal
Isotype	Rabbit IgG
Calculated MW	126942
Antigen Region	586-613

RIP140 Antibody (Center) - Additional Information

Gene ID 8204

Other Names

Nuclear receptor-interacting protein 1, Nuclear factor RIP140, Receptor-interacting protein 140, NRIP1

Target/Specificity

This RIP140 antibody is generated from rabbits immunized with a KLH conjugated synthetic peptide between 586-613 amino acids from the Central region of human RIP140.

Dilution

WB~~1:1000

Format

Purified polyclonal antibody supplied in PBS with 0.09% (W/V) sodium azide. This antibody is purified through a protein A column, followed by peptide affinity purification.

Storage

Maintain refrigerated at 2-8°C for up to 2 weeks. For long term storage store at -20°C in small aliquots to prevent freeze-thaw cycles.

Precautions

RIP140 Antibody (Center) is for research use only and not for use in diagnostic or therapeutic procedures.

RIP140 Antibody (Center) - Protein Information

Name NRIP1

Function Modulates transcriptional activation by steroid receptors such as NR3C1, NR3C2 and

ESR1. Also modulates transcriptional repression by nuclear hormone receptors. Positive regulator of the circadian clock gene expression: stimulates transcription of BMAL1, CLOCK and CRY1 by acting as a coactivator for RORA and RORC. Involved in the regulation of ovarian function (By similarity). Plays a role in renal development (PubMed:[28381549](#)).

Cellular Location

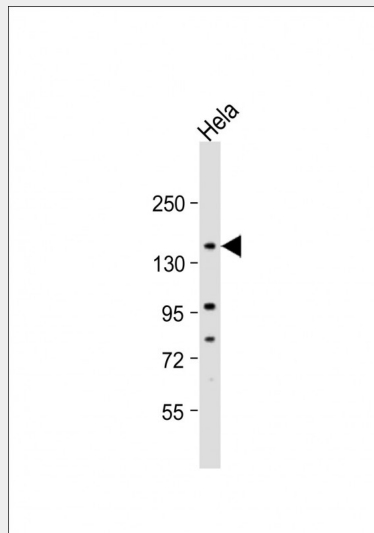
Nucleus. Note=Localized to discrete foci and redistributes to larger nuclear domains upon binding to ligand-bound NR3C1

RIP140 Antibody (Center) - Protocols

Provided below are standard protocols that you may find useful for product applications.

- [Western Blot](#)
- [Blocking Peptides](#)
- [Dot Blot](#)
- [Immunohistochemistry](#)
- [Immunofluorescence](#)
- [Immunoprecipitation](#)
- [Flow Cytometry](#)
- [Cell Culture](#)

RIP140 Antibody (Center) - Images



Anti-RIP140 Antibody (Center) at 1:1000 dilution + HeLa whole cell lysate Lysates/proteins at 20 µg per lane. Secondary Goat Anti-Rabbit IgG, (H+L), Peroxidase conjugated at 1/10000 dilution. Predicted band size : 127 kDa Blocking/Dilution buffer: 5% NFD/MTBST.

RIP140 Antibody (Center) - Background

Nuclear receptor interacting protein 1 (NRIP1) is a nuclear protein that specifically interacts with the hormone-dependent activation domain AF2 of nuclear receptors. Also known as RIP140, this protein modulates transcriptional activity of the estrogen receptor.

RIP140 Antibody (Center) - References

Liu, C.Y., et al. Carcinogenesis 31(7):1259-1263(2010)
Rose, J.E., et al. Mol. Med. 16 (7-8), 247-253 (2010) :
Docquier, A., et al. Clin. Cancer Res. 16(11):2959-2970(2010)
Fritah, A., et al. Cardiovasc. Res. 86(3):443-451(2010)
Suzuki, A., et al. J. Biol. Chem. 285(18):13444-13453(2010)