

**LGALS8 Antibody (C-term)**  
**Affinity Purified Rabbit Polyclonal Antibody (Pab)**  
**Catalog # AP17988b**

**Specification**

---

**LGALS8 Antibody (C-term) - Product Information**

Application	WB,E
Primary Accession	<a href="#">O00214</a>
Other Accession	<a href="#">NP_963837</a>
Reactivity	Human
Host	Rabbit
Clonality	Polyclonal
Isotype	Rabbit IgG
Antigen Region	271-298

**LGALS8 Antibody (C-term) - Additional Information**

**Gene ID** 3964

**Other Names**

Galectin-8, Gal-8, Po66 carbohydrate-binding protein, Po66-CBP, Prostate carcinoma tumor antigen 1, PCTA-1, LGALS8

**Target/Specificity**

This LGALS8 antibody is generated from rabbits immunized with a KLH conjugated synthetic peptide between 271-298 amino acids from the C-terminal region of human LGALS8.

**Dilution**

WB~~1:2000

**Format**

Purified polyclonal antibody supplied in PBS with 0.09% (W/V) sodium azide. This antibody is purified through a protein A column, followed by peptide affinity purification.

**Storage**

Maintain refrigerated at 2-8°C for up to 2 weeks. For long term storage store at -20°C in small aliquots to prevent freeze-thaw cycles.

**Precautions**

LGALS8 Antibody (C-term) is for research use only and not for use in diagnostic or therapeutic procedures.

**LGALS8 Antibody (C-term) - Protein Information**

**Name** LGALS8 ([HGNC:6569](#))

**Function** Beta-galactoside-binding lectin that acts as a sensor of membrane damage caused by infection and restricts the proliferation of infecting pathogens by targeting them for autophagy

(PubMed:[22246324](#), PubMed:[28077878](#)). Detects membrane rupture by binding beta-galactoside ligands located on the luminal side of the endosome membrane; these ligands becoming exposed to the cytoplasm following rupture (PubMed:[22246324](#), PubMed:[28077878](#)). Restricts infection by initiating autophagy via interaction with CALCOCO2/NDP52 (PubMed:[22246324](#), PubMed:[28077878](#)). Required to restrict infection of bacterial invasion such as *S.typhimurium* (PubMed:[22246324](#)). Also required to restrict infection of Picornaviridae viruses (PubMed:[28077878](#)). Has a marked preference for 3'-O-sialylated and 3'-O-sulfated glycans (PubMed:[21288902](#)).

#### Cellular Location

Cytoplasmic vesicle. Cytoplasm, cytosol

#### Tissue Location

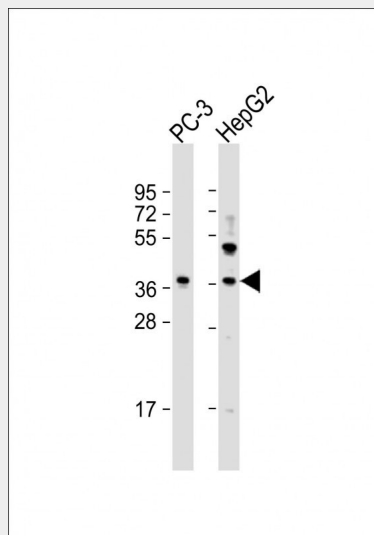
Ubiquitous. Selective expression by prostate carcinomas versus normal prostate and benign prostatic hypertrophy

### LGALS8 Antibody (C-term) - Protocols

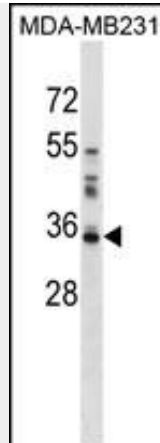
Provided below are standard protocols that you may find useful for product applications.

- [Western Blot](#)
- [Blocking Peptides](#)
- [Dot Blot](#)
- [Immunohistochemistry](#)
- [Immunofluorescence](#)
- [Immunoprecipitation](#)
- [Flow Cytometry](#)
- [Cell Culture](#)

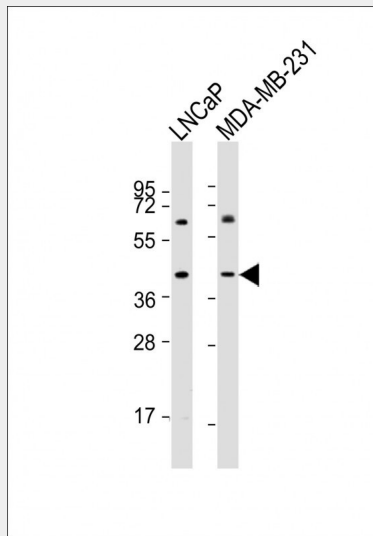
### LGALS8 Antibody (C-term) - Images



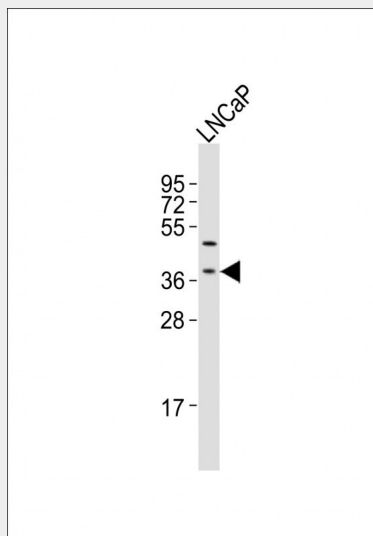
All lanes : Anti-LGALS8 Antibody (C-term) at 1:2000 dilution Lane 1: PC-3 whole cell lysate Lane 2: HepG2 whole cell lysate Lysates/proteins at 20 µg per lane. Secondary Goat Anti-Rabbit IgG, (H+L), Peroxidase conjugated at 1/10000 dilution. Predicted band size : 36 kDa Blocking/Dilution buffer: 5% NFDm/TBST.



LGALS8 Antibody (C-term) (Cat. #AP17988b) western blot analysis in MDA-MB231 cell line lysates (35ug/lane). This demonstrates the LGALS8 antibody detected the LGALS8 protein (arrow).



All lanes : Anti-LGALS8 Antibody (C-term) at 1:2000 dilution Lane 1: LNCaP whole cell lysates Lane 2: MDA-MB-231 whole cell lysates Lysates/proteins at 20  $\mu$ g per lane. Secondary Goat Anti-Rabbit IgG, (H+L), Peroxidase conjugated at 1/10000 dilution. Predicted band size : 36 kDa Blocking/Dilution buffer: 5% NFDm/TBST.



Anti-LGALS8 Antibody (C-term) at 1:2000 dilution + LNCaP whole cell lysates Lysates/proteins at 20 µg per lane. Secondary Goat Anti-Rabbit IgG, (H+L), Peroxidase conjugated at 1/10000 dilution  
Predicted band size : 36 kDa Blocking/Dilution buffer: 5% NFDM/TBST.

#### **LGALS8 Antibody (C-term) - Background**

This gene encodes a member of the galectin family. Galectins are beta-galactoside-binding animal lectins with conserved carbohydrate recognition domains. The galectins have been implicated in many essential functions including development, differentiation, cell-cell adhesion, cell-matrix interaction, growth regulation, apoptosis, and RNA splicing. This gene is widely expressed in tumoral tissues and seems to be involved in integrin-like cell interactions. Alternatively spliced transcript variants encoding different isoforms have been identified.

#### **LGALS8 Antibody (C-term) - References**

Cludts, S., et al. *Anticancer Res.* 29(12):4933-4940(2009)  
Cueni, L.N., et al. *Exp. Cell Res.* 315(10):1715-1723(2009)  
Yoshida, H., et al. *Acta Crystallogr. Sect. F Struct. Biol. Cryst. Commun.* 65 (PT 5), 512-514 (2009) :  
Massardo, L., et al. *Lupus* 18(6):539-546(2009)  
Savin, S., et al. *Med. Oncol.* 26(3):314-318(2009)