

CORO1B Antibody (C-term)
Affinity Purified Rabbit Polyclonal Antibody (Pab)
Catalog # AP17962b

Specification

CORO1B Antibody (C-term) - Product Information

| | |
|-------------------|--------------------------------|
| Application | WB,E |
| Primary Accession | O9BR76 |
| Other Accession | NP_001018080.1 |
| Reactivity | Human |
| Host | Rabbit |
| Clonality | Polyclonal |
| Isotype | Rabbit IgG |
| Calculated MW | 54235 |
| Antigen Region | 383-409 |

CORO1B Antibody (C-term) - Additional Information

Gene ID 57175

Other Names

Coronin-1B, Coronin-2, CORO1B

Target/Specificity

This CORO1B antibody is generated from rabbits immunized with a KLH conjugated synthetic peptide between 383-409 amino acids from the C-terminal region of human CORO1B.

Dilution

WB~~1:1000

Format

Purified polyclonal antibody supplied in PBS with 0.09% (W/V) sodium azide. This antibody is purified through a protein A column, followed by peptide affinity purification.

Storage

Maintain refrigerated at 2-8°C for up to 2 weeks. For long term storage store at -20°C in small aliquots to prevent freeze-thaw cycles.

Precautions

CORO1B Antibody (C-term) is for research use only and not for use in diagnostic or therapeutic procedures.

CORO1B Antibody (C-term) - Protein Information

Name CORO1B

Function Regulates leading edge dynamics and cell motility in fibroblasts. May be involved in cytokinesis and signal transduction (By similarity).

Cellular Location

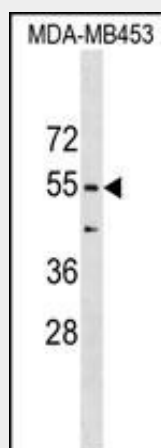
Cytoplasm, cytoskeleton. Cytoplasm, cytoskeleton, stress fiber. Note=Localized to the leading edge in fibroblasts, as well as weakly along actin stress fibers

CORO1B Antibody (C-term) - Protocols

Provided below are standard protocols that you may find useful for product applications.

- [Western Blot](#)
- [Blocking Peptides](#)
- [Dot Blot](#)
- [Immunohistochemistry](#)
- [Immunofluorescence](#)
- [Immunoprecipitation](#)
- [Flow Cytometry](#)
- [Cell Culture](#)

CORO1B Antibody (C-term) - Images



CORO1B Antibody (C-term) (Cat. #AP17962b) western blot analysis in MDA-MB453 cell line lysates (35ug/lane). This demonstrates the CORO1B antibody detected the CORO1B protein (arrow).

CORO1B Antibody (C-term) - Background

Members of the coronin family, such as CORO1B, are WD repeat-containing actin-binding proteins that regulate cell motility (Cai et al., 2005 [PubMed 16027158]).

CORO1B Antibody (C-term) - References

- Cai, L., et al. Cell 128(5):915-929(2007)
Cai, L., et al. J. Biol. Chem. 280(36):31913-31923(2005)
Cai, L., et al. J. Biol. Chem. 280(36):31913-31923(2005)
Parente, J.A. Jr., et al. J. Biol. Chem. 274(5):3017-3025(1999)
Okumura, M., et al. DNA Cell Biol. 17(9):779-787(1998)