

BRI3BP Antibody (Center)
Affinity Purified Rabbit Polyclonal Antibody (Pab)
Catalog # AP17929C

Specification

BRI3BP Antibody (Center) - Product Information

Application	WB,E
Primary Accession	Q8WY22
Other Accession	NP_542193.3
Reactivity	Human
Host	Rabbit
Clonality	Polyclonal
Isotype	Rabbit IgG
Calculated MW	27836
Antigen Region	157-183

BRI3BP Antibody (Center) - Additional Information

Gene ID 140707

Other Names

BRI3-binding protein, I3-binding protein, Cervical cancer 1 proto-oncogene-binding protein KG19, HCCRP-1, BRI3BP {ECO:0000312|EMBL:AAL543821}

Target/Specificity

This BRI3BP antibody is generated from rabbits immunized with a KLH conjugated synthetic peptide between 157-183 amino acids from the Central region of human BRI3BP.

Dilution

WB~~1:1000

Format

Purified polyclonal antibody supplied in PBS with 0.09% (W/V) sodium azide. This antibody is purified through a protein A column, followed by peptide affinity purification.

Storage

Maintain refrigerated at 2-8°C for up to 2 weeks. For long term storage store at -20°C in small aliquots to prevent freeze-thaw cycles.

Precautions

BRI3BP Antibody (Center) is for research use only and not for use in diagnostic or therapeutic procedures.

BRI3BP Antibody (Center) - Protein Information

Name BRI3BP {ECO:0000312|EMBL:AAL54382.1}

Function Involved in tumorigenesis and may function by stabilizing p53/TP53.

Cellular Location

Mitochondrion outer membrane; Multi-pass membrane protein

Tissue Location

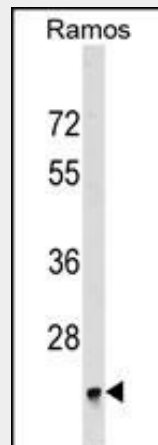
Most abundantly expressed in brain, liver and kidney (PubMed:11860200). Overexpressed in leukemia and lymphoma cell lines, as well as in various carcinomas (PubMed:17943721)

BRI3BP Antibody (Center) - Protocols

Provided below are standard protocols that you may find useful for product applications.

- [Western Blot](#)
- [Blocking Peptides](#)
- [Dot Blot](#)
- [Immunohistochemistry](#)
- [Immunofluorescence](#)
- [Immunoprecipitation](#)
- [Flow Cytometry](#)
- [Cell Culture](#)

BRI3BP Antibody (Center) - Images



BRI3BP Antibody (Center) (Cat. #AP17929c) western blot analysis in Ramos cell line lysates (35ug/lane). This demonstrates the BRI3BP antibody detected the BRI3BP protein (arrow).

BRI3BP Antibody (Center) - Background

ZNF688 is involved in tumorigenesis and may function by stabilizing TP53/p53.

BRI3BP Antibody (Center) - References

Yamazaki, T., et al. Biochem. Biophys. Res. Commun. 362(4):971-975(2007)
Lin, L., et al. Biochem. Genet. 39 (11-12), 369-377 (2001) :