

**FBXL12 Antibody (C-term)**  
**Affinity Purified Rabbit Polyclonal Antibody (Pab)**  
**Catalog # AP17921b**

**Specification**

---

**FBXL12 Antibody (C-term) - Product Information**

Application	WB,E
Primary Accession	<a href="#">O9NXX8</a>
Other Accession	<a href="#">O9EPX5</a> , <a href="#">NP_060173.1</a>
Reactivity	Human
Predicted	Mouse
Host	Rabbit
Clonality	Polyclonal
Isotype	Rabbit IgG
Calculated MW	37026
Antigen Region	277-303

**FBXL12 Antibody (C-term) - Additional Information**

**Gene ID** 54850

**Other Names**

F-box/LRR-repeat protein 12, F-box and leucine-rich repeat protein 12, F-box protein FBL12, FBXL12, FBL12

**Target/Specificity**

This FBXL12 antibody is generated from rabbits immunized with a KLH conjugated synthetic peptide between 277-303 amino acids from the C-terminal region of human FBXL12.

**Dilution**

WB~~1:1000

**Format**

Purified polyclonal antibody supplied in PBS with 0.09% (W/V) sodium azide. This antibody is purified through a protein A column, followed by peptide affinity purification.

**Storage**

Maintain refrigerated at 2-8°C for up to 2 weeks. For long term storage store at -20°C in small aliquots to prevent freeze-thaw cycles.

**Precautions**

FBXL12 Antibody (C-term) is for research use only and not for use in diagnostic or therapeutic procedures.

**FBXL12 Antibody (C-term) - Protein Information**

**Name** FBXL12

## Synonyms FBL12

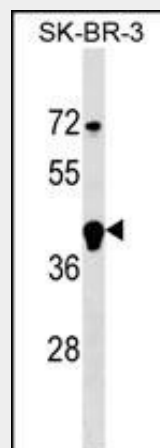
**Function** Substrate-recognition component of the SCF (SKP1-CUL1-F-box protein)-type E3 ubiquitin ligase complex. Mediates the polyubiquitination and proteasomal degradation of CAMK1 leading to disruption of cyclin D1/CDK4 complex assembly which results in G1 cell cycle arrest in lung epithelia.

## FBXL12 Antibody (C-term) - Protocols

Provided below are standard protocols that you may find useful for product applications.

- [Western Blot](#)
- [Blocking Peptides](#)
- [Dot Blot](#)
- [Immunohistochemistry](#)
- [Immunofluorescence](#)
- [Immunoprecipitation](#)
- [Flow Cytometry](#)
- [Cell Culture](#)

## FBXL12 Antibody (C-term) - Images



FBXL12 Antibody (C-term) (Cat. #AP17921b) western blot analysis in SK-BR-3 cell line lysates (35ug/lane). This demonstrates the FBXL12 antibody detected the FBXL12 protein (arrow).

## FBXL12 Antibody (C-term) - Background

Members of the F-box protein family, such as FBXL12, are characterized by an approximately 40-amino acid F-box motif. SCF complexes, formed by SKP1 (MIM 601434), cullin (see CUL1; MIM 603134), and F-box proteins, act as protein-ubiquitin ligases. F-box proteins interact with SKP1 through the F box, and they interact with ubiquitination targets through other protein interaction domains (Jin et al., 2004 [PubMed 15520277]). [supplied by OMIM].

## FBXL12 Antibody (C-term) - References

Lamesch, P., et al. Genomics 89(3):307-315(2007)  
Barrios-Rodiles, M., et al. Science 307(5715):1621-1625(2005)

Jin, J., et al. *Genes Dev.* 18(21):2573-2580(2004)  
Winston, J.T., et al. *Curr. Biol.* 9(20):1180-1182(1999)