

**ZC3H7A Antibody (Center)**  
**Affinity Purified Rabbit Polyclonal Antibody (Pab)**  
**Catalog # AP17863c****Specification**

---

**ZC3H7A Antibody (Center) - Product Information**

Application	WB,E
Primary Accession	<a href="#">Q8IWR0</a>
Other Accession	<a href="#">NP_054872.2</a>
Reactivity	Human
Host	Rabbit
Clonality	Polyclonal
Isotype	Rabbit IgG
Calculated MW	110538
Antigen Region	563-589

**ZC3H7A Antibody (Center) - Additional Information****Gene ID** 29066**Other Names**

Zinc finger CCCH domain-containing protein 7A, ZC3H7A, ZC3H7, ZC3HDC7

**Target/Specificity**

This ZC3H7A antibody is generated from rabbits immunized with a KLH conjugated synthetic peptide between 563-589 amino acids from the Central region of human ZC3H7A.

**Dilution**

WB~~1:1000

**Format**

Purified polyclonal antibody supplied in PBS with 0.09% (W/V) sodium azide. This antibody is purified through a protein A column, followed by peptide affinity purification.

**Storage**

Maintain refrigerated at 2-8°C for up to 2 weeks. For long term storage store at -20°C in small aliquots to prevent freeze-thaw cycles.

**Precautions**

ZC3H7A Antibody (Center) is for research use only and not for use in diagnostic or therapeutic procedures.

**ZC3H7A Antibody (Center) - Protein Information****Name** ZC3H7A**Synonyms** ZC3H7, ZC3HDC7

**Function** May be a specific regulator of miRNA biogenesis. Binds to microRNAs MIR7-1, MIR16-2 and MIR29A hairpins recognizing the 3'- ATA(A/T)-5' motif in the apical loop.

**Cellular Location**

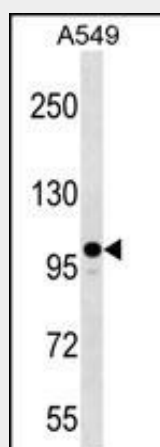
Nucleus.

**ZC3H7A Antibody (Center) - Protocols**

Provided below are standard protocols that you may find useful for product applications.

- [Western Blot](#)
- [Blocking Peptides](#)
- [Dot Blot](#)
- [Immunohistochemistry](#)
- [Immunofluorescence](#)
- [Immunoprecipitation](#)
- [Flow Cytometry](#)
- [Cell Culture](#)

**ZC3H7A Antibody (Center) - Images**



ZC3H7A Antibody (Center) (Cat. #AP17863c) western blot analysis in A549 cell line lysates (35ug/lane). This demonstrates the ZC3H7A antibody detected the ZC3H7A protein (arrow).

**ZC3H7A Antibody (Center) - Background**

ZC3H7A is part of a novel CCCH zinc finger protein family, which plays a role in the regulation of macrophage activation.

**ZC3H7A Antibody (Center) - References**

- Newton-Cheh, C., et al. Nat. Genet. 41(4):399-406(2009)  
Olsen, J.V., et al. Cell 127(3):635-648(2006)  
Olsen, J.V., et al. Cell 127(3):635-648(2006)