

RASSF3 Antibody (N-term)
Affinity Purified Rabbit Polyclonal Antibody (Pab)
Catalog # AP17845a

Specification

RASSF3 Antibody (N-term) - Product Information

| | |
|-------------------|-----------------------------|
| Application | WB,E |
| Primary Accession | Q86WH2 |
| Other Accession | NP_835463.1 |
| Reactivity | Human |
| Host | Rabbit |
| Clonality | Polyclonal |
| Isotype | Rabbit IgG |
| Calculated MW | 27562 |
| Antigen Region | 10-36 |

RASSF3 Antibody (N-term) - Additional Information

Gene ID 283349

Other Names

Ras association domain-containing protein 3, RASSF3

Target/Specificity

This RASSF3 antibody is generated from rabbits immunized with a KLH conjugated synthetic peptide between 10-36 amino acids from the N-terminal region of human RASSF3.

Dilution

WB~~1:1000

Format

Purified polyclonal antibody supplied in PBS with 0.09% (W/V) sodium azide. This antibody is purified through a protein A column, followed by peptide affinity purification.

Storage

Maintain refrigerated at 2-8°C for up to 2 weeks. For long term storage store at -20°C in small aliquots to prevent freeze-thaw cycles.

Precautions

RASSF3 Antibody (N-term) is for research use only and not for use in diagnostic or therapeutic procedures.

RASSF3 Antibody (N-term) - Protein Information

Name RASSF3

Cellular Location

Cytoplasm. Cytoplasm, cytoskeleton. Note=Localized to microtubules in vascular endothelial cells

Tissue Location

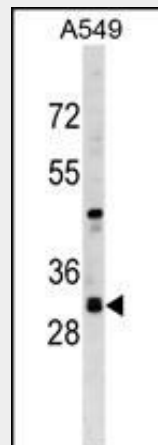
Widely expressed..

RASSF3 Antibody (N-term) - Protocols

Provided below are standard protocols that you may find useful for product applications.

- [Western Blot](#)
- [Blocking Peptides](#)
- [Dot Blot](#)
- [Immunohistochemistry](#)
- [Immunofluorescence](#)
- [Immunoprecipitation](#)
- [Flow Cytometry](#)
- [Cell Culture](#)

RASSF3 Antibody (N-term) - Images



RASSF3 Antibody (N-term) (Cat. #AP17845a) western blot analysis in A549 cell line lysates (35ug/lane). This demonstrates the RASSF3 antibody detected the RASSF3 protein (arrow).

RASSF3 Antibody (N-term) - Background

The RAS oncogene (MIM 190020) is mutated in nearly one-third of all human cancers. Members of the RAS superfamily are plasma membrane GTP-binding proteins that modulate intracellular signal transduction pathways. A subfamily of RAS effectors, including RASSF3, share a RAS association (RA) domain.[supplied by OMIM].

RASSF3 Antibody (N-term) - References

Davila, S., et al. Genes Immun. 11(3):232-238(2010)
Jacquemart, I.C., et al. Int. J. Oncol. 34(2):517-528(2009)
Fujita, H., et al. J. Biol. Chem. 280(6):5022-5031(2005)
Tommasi, S., et al. Oncogene 21(17):2713-2720(2002)