

**PROM2 Antibody (Center)**  
**Affinity Purified Rabbit Polyclonal Antibody (Pab)**  
**Catalog # AP17843c**

**Specification**

---

**PROM2 Antibody (Center) - Product Information**

Application	WB,E
Primary Accession	<a href="#">O8N271</a>
Other Accession	<a href="#">NP_001159449.1</a>
Reactivity	Human
Host	Rabbit
Clonality	Polyclonal
Isotype	Rabbit IgG
Calculated MW	91883
Antigen Region	440-466

**PROM2 Antibody (Center) - Additional Information**

**Gene ID** 150696

**Other Names**

Prominin-2, PROM-2, Prominin-like protein 2, hPROML2, PROM2, PROML2

**Target/Specificity**

This PROM2 antibody is generated from rabbits immunized with a KLH conjugated synthetic peptide between 440-466 amino acids from the Central region of human PROM2.

**Dilution**

WB~~1:1000

**Format**

Purified polyclonal antibody supplied in PBS with 0.09% (W/V) sodium azide. This antibody is purified through a protein A column, followed by peptide affinity purification.

**Storage**

Maintain refrigerated at 2-8°C for up to 2 weeks. For long term storage store at -20°C in small aliquots to prevent freeze-thaw cycles.

**Precautions**

PROM2 Antibody (Center) is for research use only and not for use in diagnostic or therapeutic procedures.

**PROM2 Antibody (Center) - Protein Information**

**Name** PROM2

**Synonyms** PROML2

### Cellular Location

Apical cell membrane; Multi-pass membrane protein. Basolateral cell membrane; Multi-pass membrane protein. Cell projection, microvillus membrane; Multi-pass membrane protein. Cell projection, cilium membrane; Multi-pass membrane protein. Note=Colocalizes with PROM1 Associates with membrane in a cholesterol-dependent manner. Localizes to the apical and basolateral membranes of epithelial cells (By similarity).

### Tissue Location

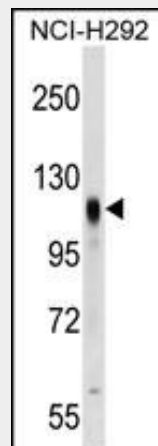
Present in saliva within small membrane particles (at protein level). Expressed in kidney, prostate, trachea, esophagus, salivary gland, thyroid gland, mammary gland adrenal gland, placenta, stomach, spinal cord and liver. In submucosal tumor, expressed in spindle-shaped or stellate stromal cells. Expressed in prostate cancer cell lines.

### PROM2 Antibody (Center) - Protocols

Provided below are standard protocols that you may find useful for product applications.

- [Western Blot](#)
- [Blocking Peptides](#)
- [Dot Blot](#)
- [Immunohistochemistry](#)
- [Immunofluorescence](#)
- [Immunoprecipitation](#)
- [Flow Cytometry](#)
- [Cell Culture](#)

### PROM2 Antibody (Center) - Images



PROM2 Antibody (Center) (Cat. #AP17843c) western blot analysis in NCI-H292 cell line lysates (35ug/lane). This demonstrates the PROM2 antibody detected the PROM2 protein (arrow).

### PROM2 Antibody (Center) - Background

This gene encodes a member of the prominin family of pentaspan membrane glycoproteins. The encoded protein localizes to basal epithelial cells and may be involved in the organization of plasma membrane microdomains. Alternative splicing results in multiple transcript variants.

### PROM2 Antibody (Center) - References

Jaszai, J., et al. Histochem. Cell Biol. 133(5):527-539(2010)  
Yao, J., et al. Oncol. Rep. 22(4):781-787(2009)  
Jaszai, J., et al. Histochem. Cell Biol. 130(4):749-759(2008)  
Fargeas, C.A., et al. J. Biol. Chem. 278(10):8586-8596(2003)