

**SHROOM2 Antibody (Center)**  
**Affinity Purified Rabbit Polyclonal Antibody (Pab)**  
**Catalog # AP17830C**

**Specification**

---

**SHROOM2 Antibody (Center) - Product Information**

Application	WB,E
Primary Accession	<a href="#">O13796</a>
Other Accession	<a href="#">NP_001640.1</a>
Reactivity	Human
Host	Rabbit
Clonality	Polyclonal
Isotype	Rabbit IgG
Calculated MW	176410
Antigen Region	599-625

**SHROOM2 Antibody (Center) - Additional Information**

**Gene ID** 357

**Other Names**

Protein Shroom2, Apical-like protein, Protein APXL, SHROOM2, APXL

**Target/Specificity**

This SHROOM2 antibody is generated from rabbits immunized with a KLH conjugated synthetic peptide between 599-625 amino acids from the Central region of human SHROOM2.

**Dilution**

WB~~1:1000

**Format**

Purified polyclonal antibody supplied in PBS with 0.09% (W/V) sodium azide. This antibody is purified through a protein A column, followed by peptide affinity purification.

**Storage**

Maintain refrigerated at 2-8°C for up to 2 weeks. For long term storage store at -20°C in small aliquots to prevent freeze-thaw cycles.

**Precautions**

SHROOM2 Antibody (Center) is for research use only and not for use in diagnostic or therapeutic procedures.

**SHROOM2 Antibody (Center) - Protein Information**

**Name** SHROOM2

**Synonyms** APXL

**Function** May be involved in endothelial cell morphology changes during cell spreading. In the retinal pigment epithelium, may regulate the biogenesis of melanosomes and promote their association with the apical cell surface by inducing gamma-tubulin redistribution (By similarity).

**Cellular Location**

Apical cell membrane. Cell junction, tight junction. Cytoplasm, cytoskeleton. Note=Associates with cortical F-actin.

**Tissue Location**

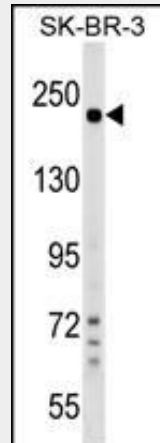
Abundant in retina and melanoma; also in brain, placenta, lung, kidney and pancreas

**SHROOM2 Antibody (Center) - Protocols**

Provided below are standard protocols that you may find useful for product applications.

- [Western Blot](#)
- [Blocking Peptides](#)
- [Dot Blot](#)
- [Immunohistochemistry](#)
- [Immunofluorescence](#)
- [Immunoprecipitation](#)
- [Flow Cytometry](#)
- [Cell Culture](#)

**SHROOM2 Antibody (Center) - Images**



SHROOM2 Antibody (Center) (Cat. #AP17830c) western blot analysis in SK-BR-3 cell line lysates (35ug/lane). This demonstrates the SHROOM2 antibody detected the SHROOM2 protein (arrow).

**SHROOM2 Antibody (Center) - Background**

The protein encoded by this gene shares significant similarities with the apical protein from *Xenopus laevis* which is implicated in amiloride-sensitive sodium channel activity. This gene is a strong candidate gene for ocular albinism type 1 syndrome.

**SHROOM2 Antibody (Center) - References**

Wu, C., et al. *Proteomics* 7(11):1775-1785(2007)

Olsen, J.V., et al. Cell 127(3):635-648(2006)

Olsen, J.V., et al. Cell 127(3):635-648(2006)

Dietz, M.L., et al. J. Biol. Chem. 281(29):20542-20554(2006)

Hagens, O., et al. BMC Cell Biol. 7, 18 (2006) :