

**ZNF828 Antibody (Center)**  
**Affinity Purified Rabbit Polyclonal Antibody (Pab)**  
**Catalog # AP17817C**

**Specification**

---

**ZNF828 Antibody (Center) - Product Information**

Application	WB,E
Primary Accession	<a href="#">O96JM3</a>
Other Accession	<a href="#">NP_001157616.1</a>
Reactivity	Human
Host	Rabbit
Clonality	Polyclonal
Isotype	Rabbit IgG
Calculated MW	89099
Antigen Region	203-229

**ZNF828 Antibody (Center) - Additional Information**

**Gene ID** 283489

**Other Names**

Chromosome alignment-maintaining phosphoprotein 1, Zinc finger protein 828, CHAMP1, C13orf8, CAMP, KIAA1802, ZNF828

**Target/Specificity**

This ZNF828 antibody is generated from rabbits immunized with a KLH conjugated synthetic peptide between 203-229 amino acids from the Central region of human ZNF828.

**Dilution**

WB~~1:1000

**Format**

Purified polyclonal antibody supplied in PBS with 0.09% (W/V) sodium azide. This antibody is purified through a protein A column, followed by peptide affinity purification.

**Storage**

Maintain refrigerated at 2-8°C for up to 2 weeks. For long term storage store at -20°C in small aliquots to prevent freeze-thaw cycles.

**Precautions**

ZNF828 Antibody (Center) is for research use only and not for use in diagnostic or therapeutic procedures.

**ZNF828 Antibody (Center) - Protein Information**

**Name** CHAMP1

**Synonyms** C13orf8, CAMP, CHAMP, KIAA1802, ZNF828

**Function** Required for proper alignment of chromosomes at metaphase and their accurate segregation during mitosis. Involved in the maintenance of spindle microtubules attachment to the kinetochore during sister chromatid biorientation. May recruit CENPE and CENPF to the kinetochore.

#### **Cellular Location**

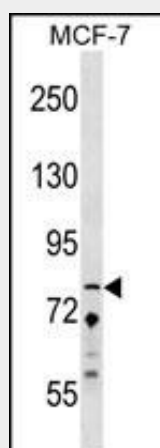
Nucleus. Chromosome. Chromosome, centromere, kinetochore. Cytoplasm, cytoskeleton, spindle

#### **ZNF828 Antibody (Center) - Protocols**

Provided below are standard protocols that you may find useful for product applications.

- [Western Blot](#)
- [Blocking Peptides](#)
- [Dot Blot](#)
- [Immunohistochemistry](#)
- [Immunofluorescence](#)
- [Immunoprecipitation](#)
- [Flow Cytometry](#)
- [Cell Culture](#)

#### **ZNF828 Antibody (Center) - Images**



ZNF828 Antibody (Center) (Cat. #AP17817c) western blot analysis in MCF-7 cell line lysates (35ug/lane). This demonstrates the ZNF828 antibody detected the ZNF828 protein (arrow).

#### **ZNF828 Antibody (Center) - Background**

The function of this protein remains unknown.

#### **ZNF828 Antibody (Center) - References**

Itoh, G., et al. EMBO J. (2010) In press :  
Olsen, J.V., et al. Cell 127(3):635-648(2006)  
Beausoleil, S.A., et al. Nat. Biotechnol. 24(10):1285-1292(2006)  
Beausoleil, S.A., et al. Proc. Natl. Acad. Sci. U.S.A. 101(33):12130-12135(2004)  
Dunham, A., et al. Nature 428(6982):522-528(2004)