

**TCERG1 Antibody (C-term)**  
**Affinity Purified Rabbit Polyclonal Antibody (Pab)**  
**Catalog # AP17748b**

**Specification**

---

**TCERG1 Antibody (C-term) - Product Information**

Application	WB,E
Primary Accession	<a href="#">O14776</a>
Other Accession	<a href="#">Q8CGF7</a> , <a href="#">NP_006697.2</a> , <a href="#">NP_001035095.1</a>
Reactivity	Human
Predicted	Mouse
Host	Rabbit
Clonality	Polyclonal
Isotype	Rabbit IgG
Calculated MW	123901
Antigen Region	991-1020

**TCERG1 Antibody (C-term) - Additional Information**

**Gene ID** 10915

**Other Names**

Transcription elongation regulator 1, TATA box-binding protein-associated factor 2S, Transcription factor CA150, TCERG1, CA150, TAF2S

**Target/Specificity**

This TCERG1 antibody is generated from rabbits immunized with a KLH conjugated synthetic peptide between 991-1020 amino acids from the C-terminal region of human TCERG1.

**Dilution**

WB~~1:1000

**Format**

Purified polyclonal antibody supplied in PBS with 0.09% (W/V) sodium azide. This antibody is purified through a protein A column, followed by peptide affinity purification.

**Storage**

Maintain refrigerated at 2-8°C for up to 2 weeks. For long term storage store at -20°C in small aliquots to prevent freeze-thaw cycles.

**Precautions**

TCERG1 Antibody (C-term) is for research use only and not for use in diagnostic or therapeutic procedures.

**TCERG1 Antibody (C-term) - Protein Information**

**Name** TCERG1

### Synonyms CA150, TAF2S

**Function** Transcription factor that binds RNA polymerase II and inhibits the elongation of transcripts from target promoters. Regulates transcription elongation in a TATA box-dependent manner. Necessary for TAT-dependent activation of the human immunodeficiency virus type 1 (HIV-1) promoter.

### Cellular Location

Nucleus

### Tissue Location

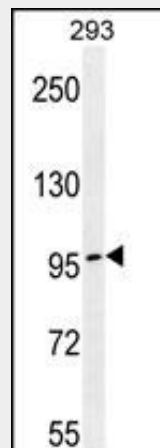
Detected in brain neurons.

### TCERG1 Antibody (C-term) - Protocols

Provided below are standard protocols that you may find useful for product applications.

- [Western Blot](#)
- [Blocking Peptides](#)
- [Dot Blot](#)
- [Immunohistochemistry](#)
- [Immunofluorescence](#)
- [Immunoprecipitation](#)
- [Flow Cytometry](#)
- [Cell Culture](#)

### TCERG1 Antibody (C-term) - Images



TCERG1 Antibody (C-term) (Cat. #AP17748b) western blot analysis in 293 cell line lysates (35ug/lane). This demonstrates the TCERG1 antibody detected the TCERG1 protein (arrow).

### TCERG1 Antibody (C-term) - Background

This gene encodes a nuclear protein that regulates transcriptional elongation and pre-mRNA splicing. The encoded protein interacts with the hyperphosphorylated C-terminal domain of RNA polymerase II via multiple FF domains, and with the pre-mRNA splicing factor SF1 via a WW domain. Alternative splicing results in multiple transcripts variants encoding different isoforms.

**TCERG1 Antibody (C-term) - References**

- Sanchez-Alvarez, M., et al. J. Biol. Chem. 285(20):15220-15233(2010)  
Koskinen, L.L., et al. Tissue Antigens 74(5):408-416(2009)  
Murphy, J.M., et al. J. Mol. Biol. 393(2):409-424(2009)  
Lu, M., et al. J. Mol. Biol. 393(2):397-408(2009)  
Pearson, J.L., et al. J. Biol. Chem. 283(12):7949-7961(2008)