

**PATE1 Antibody (C-term)**  
**Affinity Purified Rabbit Polyclonal Antibody (Pab)**  
**Catalog # AP17742b**

**Specification**

---

**PATE1 Antibody (C-term) - Product Information**

Application	WB,E
Primary Accession	<a href="#">O8WXA2</a>
Other Accession	<a href="#">NP_612151.1</a>
Reactivity	Human
Host	Rabbit
Clonality	Polyclonal
Isotype	Rabbit IgG
Antigen Region	87-114

**PATE1 Antibody (C-term) - Additional Information**

**Gene ID** 160065

**Other Names**

Prostate and testis expressed protein 1, PATE1, PATE

**Target/Specificity**

This PATE1 antibody is generated from rabbits immunized with a KLH conjugated synthetic peptide between 87-114 amino acids from the C-terminal region of human PATE1.

**Dilution**

WB~~1:1000

**Format**

Purified polyclonal antibody supplied in PBS with 0.09% (W/V) sodium azide. This antibody is purified through a protein A column, followed by peptide affinity purification.

**Storage**

Maintain refrigerated at 2-8°C for up to 2 weeks. For long term storage store at -20°C in small aliquots to prevent freeze-thaw cycles.

**Precautions**

PATE1 Antibody (C-term) is for research use only and not for use in diagnostic or therapeutic procedures.

**PATE1 Antibody (C-term) - Protein Information**

**Name** PATE1

**Synonyms** PATE

**Cellular Location**

Secreted.

#### Tissue Location

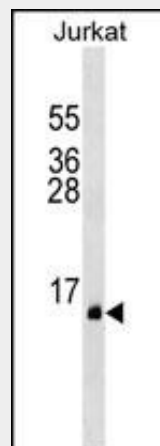
Expressed specifically in prostate cancer, normal prostate, and testis. Expressed in the epithelial cells of the prostate cancer and normal prostate tissues.

#### PATE1 Antibody (C-term) - Protocols

Provided below are standard protocols that you may find useful for product applications.

- [Western Blot](#)
- [Blocking Peptides](#)
- [Dot Blot](#)
- [Immunohistochemistry](#)
- [Immunofluorescence](#)
- [Immunoprecipitation](#)
- [Flow Cytometry](#)
- [Cell Culture](#)

#### PATE1 Antibody (C-term) - Images



PATE1 Antibody (C-term) (Cat. #AP17742b) western blot analysis in Jurkat cell line lysates (35ug/lane). This demonstrates the PATE1 antibody detected the PATE1 protein (arrow).

#### PATE1 Antibody (C-term) - Background

The function of this protein is unknown.

#### PATE1 Antibody (C-term) - References

- Levitin, F., et al. J. Biol. Chem. 283(24):16928-16939(2008)  
Soler-Garcia, A.A., et al. Reproduction 129(4):515-524(2005)  
Bera, T.K., et al. Proc. Natl. Acad. Sci. U.S.A. 99(5):3058-3063(2002)