

**LASS6 Antibody (C-term)**  
**Affinity Purified Rabbit Polyclonal Antibody (Pab)**  
**Catalog # AP17693b**

**Specification**

---

**LASS6 Antibody (C-term) - Product Information**

Application	WB,E
Primary Accession	<a href="#">Q6ZMG9</a>
Other Accession	<a href="#">NP_982288.1</a>
Reactivity	Human
Host	Rabbit
Clonality	Polyclonal
Isotype	Rabbit IgG
Calculated MW	44890
Antigen Region	335-361

**LASS6 Antibody (C-term) - Additional Information**

**Gene ID** 253782

**Other Names**

Ceramide synthase 6, CerS6, LAG1 longevity assurance homolog 6, CERS6, LASS6

**Target/Specificity**

This LASS6 antibody is generated from rabbits immunized with a KLH conjugated synthetic peptide between 335-361 amino acids from the C-terminal region of human LASS6.

**Dilution**

WB~~1:1000

**Format**

Purified polyclonal antibody supplied in PBS with 0.09% (W/V) sodium azide. This antibody is purified through a protein A column, followed by peptide affinity purification.

**Storage**

Maintain refrigerated at 2-8°C for up to 2 weeks. For long term storage store at -20°C in small aliquots to prevent freeze-thaw cycles.

**Precautions**

LASS6 Antibody (C-term) is for research use only and not for use in diagnostic or therapeutic procedures.

**LASS6 Antibody (C-term) - Protein Information**

**Name** CERS6 ([HGNC:23826](#))

**Function** Ceramide synthase that catalyzes the transfer of the acyl chain from acyl-CoA to a sphingoid base, with high selectivity toward palmitoyl-CoA (hexadecanoyl-CoA; C16:0-CoA)

(PubMed:[17609214](#), PubMed:[17977534](#), PubMed:[23530041](#), PubMed:[26887952](#), PubMed:[31916624](#)). Can use other acyl donors, but with less efficiency (By similarity). N- acylates sphinganine and sphingosine bases to form dihydroceramides and ceramides in de novo synthesis and salvage pathways, respectively (PubMed:[17977534](#), PubMed:[23530041](#), PubMed:[26887952](#), PubMed:[31916624](#)). Ceramides generated by CERS6 play a role in inflammatory response (By similarity). Acts as a regulator of metabolism and hepatic lipid accumulation (By similarity). Under high fat diet, palmitoyl- (C16:0-) ceramides generated by CERS6 specifically bind the mitochondrial fission factor MFF, thereby promoting mitochondrial fragmentation and contributing to the development of obesity (By similarity).

#### Cellular Location

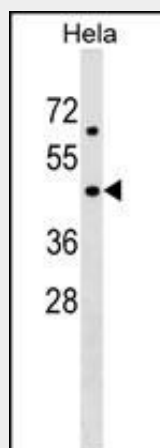
Endoplasmic reticulum membrane {ECO:0000250|UniProtKB:Q8C172}; Multi-pass membrane protein {ECO:0000250|UniProtKB:Q8C172}

#### LASS6 Antibody (C-term) - Protocols

Provided below are standard protocols that you may find useful for product applications.

- [Western Blot](#)
- [Blocking Peptides](#)
- [Dot Blot](#)
- [Immunohistochemistry](#)
- [Immunofluorescence](#)
- [Immunoprecipitation](#)
- [Flow Cytometry](#)
- [Cell Culture](#)

#### LASS6 Antibody (C-term) - Images



LASS6 Antibody (C-term) (Cat. #AP17693b) western blot analysis in HeLa cell line lysates (35ug/lane). This demonstrates the LASS6 antibody detected the LASS6 protein (arrow).

#### LASS6 Antibody (C-term) - Background

LASS6 may be involved in sphingolipid synthesis or its regulation (By similarity).

#### LASS6 Antibody (C-term) - References

Mesicek, J., et al. Cell. Signal. 22(9):1300-1307(2010)  
Rose, J.E., et al. Mol. Med. 16 (7-8), 247-253 (2010) :

Yacoub, A., et al. Cancer Res. 70(3):1120-1129(2010)

Erez-Roman, R., et al. Biochem. Biophys. Res. Commun. 391(1):219-223(2010)

Senkal, C.E., et al. FASEB J. 24(1):296-308(2010)

**LASS6 Antibody (C-term) - Citations**

- [γ-Tocotrienol induces apoptosis in pancreatic cancer cells by upregulation of ceramide synthesis and modulation of sphingolipid transport.](#)