

**CNDP1 Antibody (Center)**  
**Affinity Purified Rabbit Polyclonal Antibody (Pab)**  
**Catalog # AP17674c**

**Specification**

---

**CNDP1 Antibody (Center) - Product Information**

Application	WB,E
Primary Accession	<a href="#">O96KN2</a>
Other Accession	<a href="#">O66HG3</a> , <a href="#">O8BUG2</a> , <a href="#">NP_116038.4</a>
Reactivity	Human
Predicted	Mouse, Rat
Host	Rabbit
Clonality	Polyclonal
Isotype	Rabbit IgG
Calculated MW	56692
Antigen Region	142-170

**CNDP1 Antibody (Center) - Additional Information**

**Gene ID** 84735

**Other Names**

Beta-Ala-His dipeptidase, CNDP dipeptidase 1, Carnosine dipeptidase 1, Glutamate carboxypeptidase-like protein 2, Serum carnosinase, CNDP1, CN1, CPGL2

**Target/Specificity**

This CNDP1 antibody is generated from rabbits immunized with a KLH conjugated synthetic peptide between 142-170 amino acids from the Central region of human CNDP1.

**Dilution**

WB~~1:1000

**Format**

Purified polyclonal antibody supplied in PBS with 0.09% (W/V) sodium azide. This antibody is purified through a protein A column, followed by peptide affinity purification.

**Storage**

Maintain refrigerated at 2-8°C for up to 2 weeks. For long term storage store at -20°C in small aliquots to prevent freeze-thaw cycles.

**Precautions**

CNDP1 Antibody (Center) is for research use only and not for use in diagnostic or therapeutic procedures.

**CNDP1 Antibody (Center) - Protein Information**

**Name** CNDP1 ([HGNC:20675](#))

### Synonyms CN1, CPGL2

**Function** Catalyzes the peptide bond hydrolysis in Xaa-His dipeptides, displaying the highest activity toward carnosine (beta-alanyl-L- histidine) and anserine (beta-alanyl-3-methyl-histidine).

### Cellular Location

Secreted.

### Tissue Location

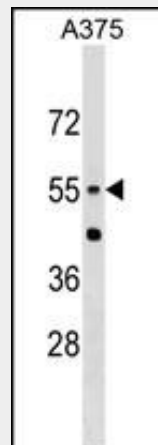
Found in serum and adult nervous central system. Absent in serum from patients with homocarnosinosis

## CNDP1 Antibody (Center) - Protocols

Provided below are standard protocols that you may find useful for product applications.

- [Western Blot](#)
- [Blocking Peptides](#)
- [Dot Blot](#)
- [Immunohistochemistry](#)
- [Immunofluorescence](#)
- [Immunoprecipitation](#)
- [Flow Cytometry](#)
- [Cell Culture](#)

## CNDP1 Antibody (Center) - Images



CNDP1 Antibody (Center) (Cat. #AP17674c) western blot analysis in A375 cell line lysates (35ug/lane). This demonstrates the CNDP1 antibody detected the CNDP1 protein (arrow).

## CNDP1 Antibody (Center) - Background

This gene encodes a member of the M20 metalloprotease family. The encoded protein is specifically expressed in the brain, is a homodimeric dipeptidase which was identified as human carnosinase. This gene contains trinucleotide (CTG) repeat length polymorphism in the coding region.

## CNDP1 Antibody (Center) - References

Alkhalaf, A., et al. Diabetologia (2010) In press :  
Riedl, E., et al. Diabetes 59(8):1984-1990(2010)  
Rose, J.E., et al. Mol. Med. 16 (7-8), 247-253 (2010) :  
Mooyaart, A.L., et al. Diabetes 59(6):1555-1559(2010)  
Kim, S., et al. Clin J Am Soc Nephrol 5(6):1072-1078(2010)