

**SCO2 Antibody (C-term)**  
**Affinity Purified Rabbit Polyclonal Antibody (Pab)**  
**Catalog # AP17644B**

**Specification**

---

**SCO2 Antibody (C-term) - Product Information**

Application	WB,E
Primary Accession	<a href="#">O43819</a>
Other Accession	<a href="#">Q8VCL2</a> , <a href="#">A6H784</a> , <a href="#">NP_001162581.1</a>
Reactivity	Human
Predicted	Bovine, Mouse
Host	Rabbit
Clonality	Polyclonal
Isotype	Rabbit IgG
Calculated MW	29810
Antigen Region	196-224

**SCO2 Antibody (C-term) - Additional Information**

**Gene ID** 9997

**Other Names**

Protein SCO2 homolog, mitochondrial, SCO2

**Target/Specificity**

This SCO2 antibody is generated from rabbits immunized with a KLH conjugated synthetic peptide between 196-224 amino acids from the C-terminal region of human SCO2.

**Dilution**

WB~~1:1000

**Format**

Purified polyclonal antibody supplied in PBS with 0.09% (W/V) sodium azide. This antibody is purified through a protein A column, followed by peptide affinity purification.

**Storage**

Maintain refrigerated at 2-8°C for up to 2 weeks. For long term storage store at -20°C in small aliquots to prevent freeze-thaw cycles.

**Precautions**

SCO2 Antibody (C-term) is for research use only and not for use in diagnostic or therapeutic procedures.

**SCO2 Antibody (C-term) - Protein Information**

**Name** SCO2

**Function** Copper metallochaperone essential for the synthesis and maturation of cytochrome c

oxidase subunit II (MT-CO2/COX2) by facilitating the incorporation of copper into the Cu(A) site of MT- CO2/COX2 (PubMed:[15229189](#), PubMed:[17189203](#), PubMed:[19336478](#)). Could also act as a thiol-disulfide oxidoreductase to regulate the redox state of the cysteines in SCO1 during maturation of MT-CO2/COX2 (PubMed:[19336478](#)).

#### Cellular Location

Mitochondrion inner membrane; Single-pass membrane protein

#### Tissue Location

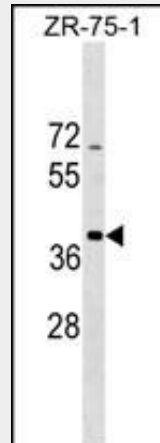
Ubiquitous.

### SCO2 Antibody (C-term) - Protocols

Provided below are standard protocols that you may find useful for product applications.

- [Western Blot](#)
- [Blocking Peptides](#)
- [Dot Blot](#)
- [Immunohistochemistry](#)
- [Immunofluorescence](#)
- [Immunoprecipitation](#)
- [Flow Cytometry](#)
- [Cell Culture](#)

### SCO2 Antibody (C-term) - Images



SCO2 Antibody (C-term) (Cat. #AP17644b) western blot analysis in ZR-75-1 cell line lysates (35ug/lane). This demonstrates the SCO2 antibody detected the SCO2 protein (arrow).

### SCO2 Antibody (C-term) - Background

Cytochrome c oxidase (COX) catalyzes the transfer of electrons from cytochrome c to molecular oxygen, which helps to maintain the proton gradient across the inner mitochondrial membrane that is necessary for aerobic ATP production. Human COX is a multimeric protein complex that requires several assembly factors; this gene encodes one of the COX assembly factors. The encoded protein is a metallochaperone that is involved in the biogenesis of cytochrome c oxidase subunit II. Mutations in this gene are associated with fatal infantile encephalomyopathy.

**SCO2 Antibody (C-term) - References**

- Bailey, S.D., et al. Diabetes Care 33(10):2250-2253(2010)  
Foltopoulou, P.F., et al. Biochim. Biophys. Acta 1802(6):497-508(2010)  
Pronicki, M., et al. Eur. J. Paediatr. Neurol. 14(3):253-260(2010)  
Kamatani, Y., et al. Nat. Genet. 42(3):210-215(2010)  
Talmud, P.J., et al. Am. J. Hum. Genet. 85(5):628-642(2009)