

**RPIA Antibody (Center)**  
**Affinity Purified Rabbit Polyclonal Antibody (Pab)**  
**Catalog # AP17602c**

**Specification**

---

**RPIA Antibody (Center) - Product Information**

Application	WB,E
Primary Accession	<a href="#">P49247</a>
Other Accession	<a href="#">A2TLM1</a> , <a href="#">P47968</a> , <a href="#">Q3T186</a> , <a href="#">NP_653164.2</a>
Reactivity	Human
Predicted	Bovine, Mouse, Pig
Host	Rabbit
Clonality	Polyclonal
Isotype	Rabbit IgG
Antigen Region	181-207

**RPIA Antibody (Center) - Additional Information**

**Gene ID** 22934

**Other Names**

Ribose-5-phosphate isomerase, Phosphoriboisomerase, RPIA, RPI

**Target/Specificity**

This RPIA antibody is generated from rabbits immunized with a KLH conjugated synthetic peptide between 181-207 amino acids from the Central region of human RPIA.

**Dilution**

WB~~1:1000

**Format**

Purified polyclonal antibody supplied in PBS with 0.09% (W/V) sodium azide. This antibody is purified through a protein A column, followed by peptide affinity purification.

**Storage**

Maintain refrigerated at 2-8°C for up to 2 weeks. For long term storage store at -20°C in small aliquots to prevent freeze-thaw cycles.

**Precautions**

RPIA Antibody (Center) is for research use only and not for use in diagnostic or therapeutic procedures.

**RPIA Antibody (Center) - Protein Information**

**Name** RPIA ([HGNC:10297](#))

**Synonyms** RPI

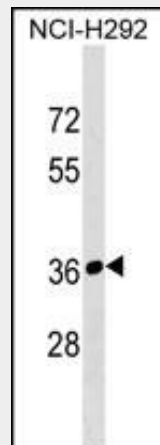
**Function** Catalyzes the reversible conversion of ribose-5-phosphate to ribulose 5-phosphate and participates in the first step of the non-oxidative branch of the pentose phosphate pathway.

### RPIA Antibody (Center) - Protocols

Provided below are standard protocols that you may find useful for product applications.

- [Western Blot](#)
- [Blocking Peptides](#)
- [Dot Blot](#)
- [Immunohistochemistry](#)
- [Immunofluorescence](#)
- [Immunoprecipitation](#)
- [Flow Cytometry](#)
- [Cell Culture](#)

### RPIA Antibody (Center) - Images



RPIA Antibody (Center) (Cat. #AP17602c) western blot analysis in NCI-H292 cell line lysates (35ug/lane). This demonstrates the RPIA antibody detected the RPIA protein (arrow).

### RPIA Antibody (Center) - Background

The protein encoded by this gene is an enzyme, which catalyzes the reversible conversion between ribose-5-phosphate and ribulose-5-phosphate in the pentose-phosphate pathway. This gene is highly conserved in most organisms. The enzyme plays an essential role in the carbohydrate metabolism. Mutations in this gene cause ribose 5-phosphate isomerase deficiency. A pseudogene is found on chromosome 18.

### RPIA Antibody (Center) - References

- Bailey, S.D., et al. *Diabetes Care* 33(10):2250-2253(2010)  
Rose, J.E., et al. *Mol. Med.* 16 (7-8), 247-253 (2010) :  
Talmud, P.J., et al. *Am. J. Hum. Genet.* 85(5):628-642(2009)  
Berry, G.T. *J. Inherit. Metab. Dis.* 31 (6), 661 (2008) :  
Wamelink, M.M., et al. *J. Inherit. Metab. Dis.* 31(6):703-717(2008)