

AMY1A Antibody (C-term)
Affinity Purified Rabbit Polyclonal Antibody (Pab)
Catalog # AP17557b

Specification

AMY1A Antibody (C-term) - Product Information

Application	WB,E
Primary Accession	P04745
Other Accession	NP_001008219.1
Reactivity	Human
Host	Rabbit
Clonality	Polyclonal
Isotype	Rabbit IgG
Antigen Region	359-388

AMY1A Antibody (C-term) - Additional Information

Other Names

Alpha-amylase 1, 4-alpha-D-glucan glucohydrolase 1, Salivary alpha-amylase, AMY1A, AMY1

Target/Specificity

This AMY1A antibody is generated from rabbits immunized with a KLH conjugated synthetic peptide between 359-388 amino acids from the C-terminal region of human AMY1A.

Dilution

WB~~1:1000

Format

Purified polyclonal antibody supplied in PBS with 0.09% (W/V) sodium azide. This antibody is purified through a protein A column, followed by peptide affinity purification.

Storage

Maintain refrigerated at 2-8°C for up to 2 weeks. For long term storage store at -20°C in small aliquots to prevent freeze-thaw cycles.

Precautions

AMY1A Antibody (C-term) is for research use only and not for use in diagnostic or therapeutic procedures.

AMY1A Antibody (C-term) - Protein Information

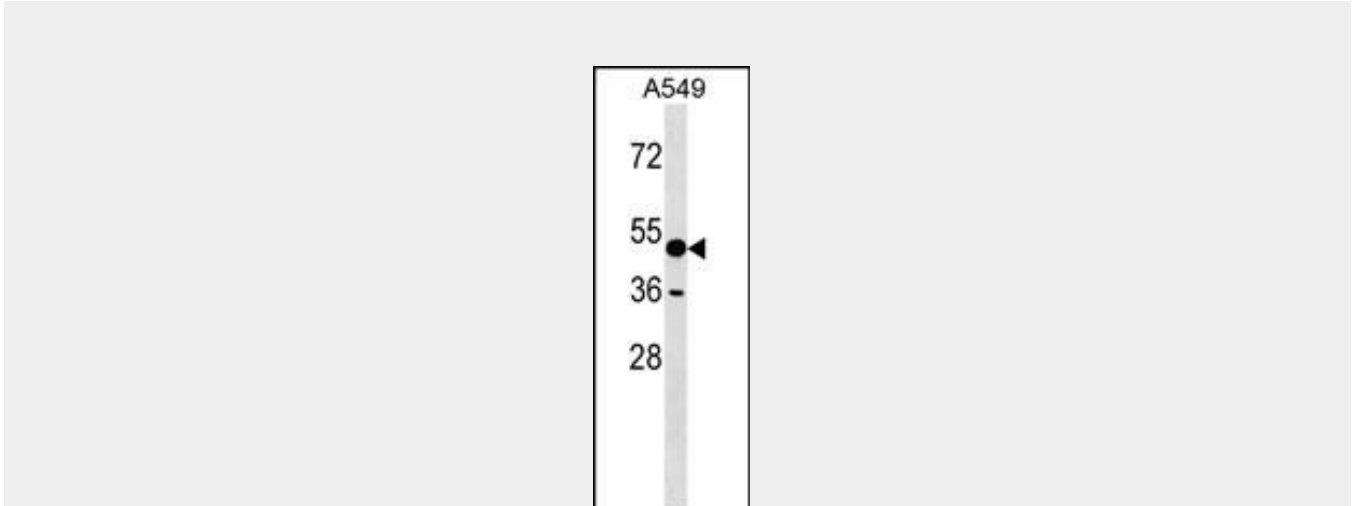
AMY1A Antibody (C-term) - Protocols

Provided below are standard protocols that you may find useful for product applications.

- [Western Blot](#)

- [Blocking Peptides](#)
- [Dot Blot](#)
- [Immunohistochemistry](#)
- [Immunofluorescence](#)
- [Immunoprecipitation](#)
- [Flow Cytometry](#)
- [Cell Culture](#)

AMY1A Antibody (C-term) - Images



AMY1A Antibody (C-term) (Cat. #AP17557b) western blot analysis in A549 cell line lysates (35ug/lane). This demonstrates the AMY1A antibody detected the AMY1A protein (arrow).

AMY1A Antibody (C-term) - Background

Amylases are secreted proteins that hydrolyze 1,4-alpha-glucoside bonds in oligosaccharides and polysaccharides, and thus catalyze the first step in digestion of dietary starch and glycogen. The human genome has a cluster of several amylase genes that are expressed at high levels in either salivary gland or pancreas. This gene encodes an amylase isoenzyme produced by the salivary gland. Alternative splicing results in multiple transcript variants encoding the same protein.

AMY1A Antibody (C-term) - References

- Ragunath, C., et al. J. Mol. Biol. 384(5):1232-1248(2008)
Takahashi, T., et al. Neuro Endocrinol. Lett. 28(5):662-665(2007)
Perry, G.H., et al. Nat. Genet. 39(10):1256-1260(2007)
Chaudhuri, B., et al. BMC Microbiol. 7, 60 (2007) :
Ewing, R.M., et al. Mol. Syst. Biol. 3, 89 (2007) :