

**TYRP1 Antibody (Center)**  
**Affinity Purified Rabbit Polyclonal Antibody (Pab)**  
**Catalog # AP17543c**

**Specification**

---

**TYRP1 Antibody (Center) - Product Information**

Application	WB,E
Primary Accession	<a href="#">P17643</a>
Other Accession	<a href="#">NP_000541.1</a>
Reactivity	Human
Host	Rabbit
Clonality	Polyclonal
Isotype	Rabbit IgG
Calculated MW	60724
Antigen Region	341-371

**TYRP1 Antibody (Center) - Additional Information**

**Gene ID** 7306

**Other Names**

6-dihydroxyindole-2-carboxylic acid oxidase, DHICA oxidase, 11418-, Catalase B, Glycoprotein 75, Melanoma antigen gp75, Tyrosinase-related protein 1, TRP, TRP-1, TRP1, TYRP1, CAS2, TYRP, TYRRP

**Target/Specificity**

This TYRP1 antibody is generated from rabbits immunized with a KLH conjugated synthetic peptide between 341-371 amino acids from the Central region of human TYRP1.

**Dilution**

WB~~1:1000

**Format**

Purified polyclonal antibody supplied in PBS with 0.09% (W/V) sodium azide. This antibody is purified through a protein A column, followed by peptide affinity purification.

**Storage**

Maintain refrigerated at 2-8°C for up to 2 weeks. For long term storage store at -20°C in small aliquots to prevent freeze-thaw cycles.

**Precautions**

TYRP1 Antibody (Center) is for research use only and not for use in diagnostic or therapeutic procedures.

**TYRP1 Antibody (Center) - Protein Information**

**Name** TYRP1 ([HGNC:12450](#))

**Function** Plays a role in melanin biosynthesis (PubMed:[16704458](#), PubMed:[22556244](#), PubMed:[23504663](#)). Catalyzes the oxidation of 5,6- dihydroxyindole-2-carboxylic acid (DHICA) into indole-5,6-quinone-2- carboxylic acid in the presence of bound Cu(2+) ions, but not in the presence of Zn(2+) (PubMed:[28661582](#)). May regulate or influence the type of melanin synthesized (PubMed:[16704458](#), PubMed:[22556244](#)). Also to a lower extent, capable of hydroxylating tyrosine and producing melanin (By similarity).

#### Cellular Location

Melanosome membrane {ECO:0000250|UniProtKB:P07147}; Single-pass type I membrane protein {ECO:0000250|UniProtKB:P07147}. Note=Located to mature stage III and IV melanosomes and apposed endosomal tubular membranes. Transported to pigmented melanosomes by the BLOC-1 complex. Proper trafficking to melanosome is regulated by SGSM2, ANKRD27, RAB9A, RAB32 and RAB38 {ECO:0000250|UniProtKB:P07147}

#### Tissue Location

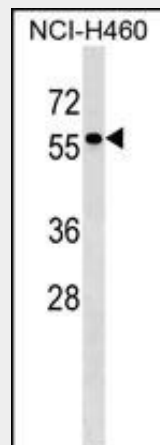
Pigment cells.

### TYRP1 Antibody (Center) - Protocols

Provided below are standard protocols that you may find useful for product applications.

- [Western Blot](#)
- [Blocking Peptides](#)
- [Dot Blot](#)
- [Immunohistochemistry](#)
- [Immunofluorescence](#)
- [Immunoprecipitation](#)
- [Flow Cytometry](#)
- [Cell Culture](#)

### TYRP1 Antibody (Center) - Images



TYRP1 Antibody (Center) (Cat. #AP17543c) western blot analysis in NCI-H460 cell line lysates (35ug/lane). This demonstrates the TYRP1 antibody detected the TYRP1 protein (arrow).

### TYRP1 Antibody (Center) - Background

This gene encodes a melanosomal enzyme that belongs to the tyrosinase family and plays an important role in the melanin biosynthetic pathway. Defects in this gene are the cause of rufous

oculocutaneous albinism and oculocutaneous albinism type III.

#### **TYRP1 Antibody (Center) - References**

Bailey, S.D., et al. Diabetes Care 33(10):2250-2253(2010)  
Rausch, M.P., et al. J. Immunol. 185(5):2828-2835(2010)  
Eriksson, N., et al. PLoS Genet. 6 (6), E1000993 (2010) :  
Edwards, M., et al. PLoS Genet. 6 (3), E1000867 (2010) :  
Talmud, P.J., et al. Am. J. Hum. Genet. 85(5):628-642(2009)