

UBE2Q1 Antibody (N-term)
Affinity Purified Rabbit Polyclonal Antibody (Pab)
Catalog # AP17537a

Specification

UBE2Q1 Antibody (N-term) - Product Information

Application	WB,E
Primary Accession	O7Z7E8
Other Accession	NP_060052.3
Reactivity	Human
Host	Rabbit
Clonality	Polyclonal
Isotype	Rabbit IgG
Calculated MW	46127
Antigen Region	78-104

UBE2Q1 Antibody (N-term) - Additional Information

Gene ID 55585

Other Names

Ubiquitin-conjugating enzyme E2 Q1, Protein NICE-5, Ubiquitin carrier protein Q1, Ubiquitin-protein ligase Q1, UBE2Q1, NICE5, UBE2Q

Target/Specificity

This UBE2Q1 antibody is generated from rabbits immunized with a KLH conjugated synthetic peptide between 78-104 amino acids from the N-terminal region of human UBE2Q1.

Dilution

WB~~1:1000

Format

Purified polyclonal antibody supplied in PBS with 0.09% (W/V) sodium azide. This antibody is purified through a protein A column, followed by peptide affinity purification.

Storage

Maintain refrigerated at 2-8°C for up to 2 weeks. For long term storage store at -20°C in small aliquots to prevent freeze-thaw cycles.

Precautions

UBE2Q1 Antibody (N-term) is for research use only and not for use in diagnostic or therapeutic procedures.

UBE2Q1 Antibody (N-term) - Protein Information

Name UBE2Q1

Synonyms NICE5, UBE2Q

Function Catalyzes the covalent attachment of ubiquitin to other proteins (PubMed:[22496338](#)). May be involved in hormonal homeostasis in females. Involved in regulation of B4GALT1 cell surface expression, B4GALT1-mediated cell adhesion to laminin and embryoid body formation (By similarity).

Cellular Location

Nucleus {ECO:0000250|UniProtKB:Q7TSS2}. Cell projection, filopodium {ECO:0000250|UniProtKB:Q7TSS2}. Cytoplasm, cytosol {ECO:0000250|UniProtKB:Q7TSS2}

Tissue Location

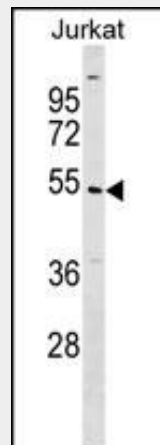
Widely expressed..

UBE2Q1 Antibody (N-term) - Protocols

Provided below are standard protocols that you may find useful for product applications.

- [Western Blot](#)
- [Blocking Peptides](#)
- [Dot Blot](#)
- [Immunohistochemistry](#)
- [Immunofluorescence](#)
- [Immunoprecipitation](#)
- [Flow Cytometry](#)
- [Cell Culture](#)

UBE2Q1 Antibody (N-term) - Images



UBE2Q1 Antibody (N-term) (Cat. #AP17537a) western blot analysis in Jurkat cell line lysates (35ug/lane). This demonstrates the UBE2Q1 antibody detected the UBE2Q1 protein (arrow).

UBE2Q1 Antibody (N-term) - Background

The modification of proteins with ubiquitin is an important cellular mechanism for targeting abnormal or short-lived proteins for degradation. Ubiquitination involves at least three classes of enzymes: ubiquitin-activating enzymes (E1s), ubiquitin-conjugating enzymes (E2s), and ubiquitin-protein ligases (E3s). This gene encodes a member of the E2 ubiquitin-conjugating enzyme family. The encoded protein is 98% identical to the mouse counterpart.

UBE2Q1 Antibody (N-term) - References

Wassler, M.J., et al. Stem Cells 26(8):2006-2018(2008)
Grelle, G., et al. Mol. Cell Proteomics 5(2):234-244(2006)
Wistow, G., et al. Mol. Vis. 8, 205-220 (2002) :
Marenholz, I., et al. Genome Res. 11(3):341-355(2001)