

EPSTI1 Antibody (N-term)
Affinity Purified Rabbit Polyclonal Antibody (Pab)
Catalog # AP17527A

Specification

EPSTI1 Antibody (N-term) - Product Information

Application	WB,E
Primary Accession	O96J88
Other Accession	NP_150280.1 , NP_001002264.1
Reactivity	Human
Host	Rabbit
Clonality	Polyclonal
Isotype	Rabbit IgG
Calculated MW	36793
Antigen Region	15-41

EPSTI1 Antibody (N-term) - Additional Information

Gene ID 94240

Other Names

Epithelial-stromal interaction protein 1, EPSTI1

Target/Specificity

This EPSTI1 antibody is generated from rabbits immunized with a KLH conjugated synthetic peptide between 15-41 amino acids from the N-terminal region of human EPSTI1.

Dilution

WB~~1:1000

Format

Purified polyclonal antibody supplied in PBS with 0.09% (W/V) sodium azide. This antibody is purified through a protein A column, followed by peptide affinity purification.

Storage

Maintain refrigerated at 2-8°C for up to 2 weeks. For long term storage store at -20°C in small aliquots to prevent freeze-thaw cycles.

Precautions

EPSTI1 Antibody (N-term) is for research use only and not for use in diagnostic or therapeutic procedures.

EPSTI1 Antibody (N-term) - Protein Information

Name EPSTI1

Function Plays a role in M1 macrophage polarization and is required for the proper regulation of gene expression during M1 versus M2 macrophage differentiation (By similarity). Might play a role

in RELA/p65 and STAT1 phosphorylation and nuclear localization upon activation of macrophages (By similarity).

Tissue Location

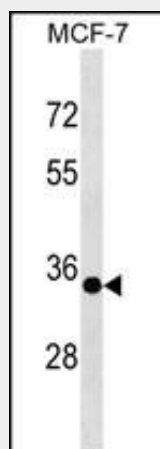
Highly expressed in placenta, small intestine, spleen, kidney, thymus, liver, salivary gland and testes. Weakly expressed in breast, skeletal muscle and colon. Highly expressed in breast cancer upon interaction between tumor cells and stromal cells in vitro. Expressed in blood mononuclear cells from patients with systemic lupus erythematosus (SLE).

EPSTI1 Antibody (N-term) - Protocols

Provided below are standard protocols that you may find useful for product applications.

- [Western Blot](#)
- [Blocking Peptides](#)
- [Dot Blot](#)
- [Immunohistochemistry](#)
- [Immunofluorescence](#)
- [Immunoprecipitation](#)
- [Flow Cytometry](#)
- [Cell Culture](#)

EPSTI1 Antibody (N-term) - Images



EPSTI1 Antibody (N-term) (Cat. #AP17527a) western blot analysis in MCF-7 cell line lysates (35ug/lane). This demonstrates the EPSTI1 antibody detected the EPSTI1 protein (arrow).

EPSTI1 Antibody (N-term) - Background

The function of this protein remains unknown.

EPSTI1 Antibody (N-term) - References

de Neergaard, M., et al. *Am. J. Pathol.* 176(3):1229-1240(2010)
Nielsen, H.L., et al. *Genomics* 79(5):703-710(2002)
Adams, M.D., et al. *Nature* 377 (6547 SUPPL), 3-174 (1995) :