

RPL18 Antibody (N-term)
Affinity Purified Rabbit Polyclonal Antibody (Pab)
Catalog # AP17491a**Specification**

RPL18 Antibody (N-term) - Product Information

Application	WB,E
Primary Accession	Q07020
Other Accession	P12001 , O95342 , P35980 , O4R5H8 , Q5E973 , P02412 , P09897 , NP_000970.1
Reactivity	Human
Predicted	Xenopus, Bovine, Monkey, Mouse, Pig, Rat
Host	Rabbit
Clonality	Polyclonal
Isotype	Rabbit IgG
Calculated MW	21634
Antigen Region	1-30

RPL18 Antibody (N-term) - Additional Information**Gene ID** 6141**Other Names**

60S ribosomal protein L18, RPL18

Target/Specificity

This RPL18 antibody is generated from rabbits immunized with a KLH conjugated synthetic peptide between 1-30 amino acids from the N-terminal region of human RPL18.

Dilution

WB~~1:1000

Format

Purified polyclonal antibody supplied in PBS with 0.09% (W/V) sodium azide. This antibody is purified through a protein A column, followed by peptide affinity purification.

Storage

Maintain refrigerated at 2-8°C for up to 2 weeks. For long term storage store at -20°C in small aliquots to prevent freeze-thaw cycles.

Precautions

RPL18 Antibody (N-term) is for research use only and not for use in diagnostic or therapeutic procedures.

RPL18 Antibody (N-term) - Protein Information**Name** RPL18

Function Component of the large ribosomal subunit (PubMed:[12962325](#), PubMed:[23636399](#), PubMed:[25901680](#), PubMed:[25957688](#), PubMed:[32669547](#)). The ribosome is a large ribonucleoprotein complex responsible for the synthesis of proteins in the cell (PubMed:[12962325](#), PubMed:[23636399](#), PubMed:[25901680](#), PubMed:[25957688](#), PubMed:[32669547](#)).

Cellular Location

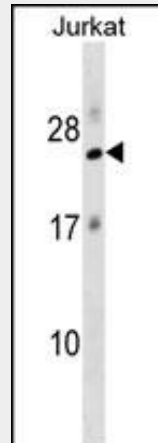
Cytoplasm, cytosol. Cytoplasm Rough endoplasmic reticulum {ECO:0000250|UniProtKB:Q95342} Note=Detected on cytosolic polysomes (PubMed:25957688). Detected in ribosomes that are associated with the rough endoplasmic reticulum (By similarity). {ECO:0000250|UniProtKB:Q95342, ECO:0000269|PubMed:25957688}

RPL18 Antibody (N-term) - Protocols

Provided below are standard protocols that you may find useful for product applications.

- [Western Blot](#)
- [Blocking Peptides](#)
- [Dot Blot](#)
- [Immunohistochemistry](#)
- [Immunofluorescence](#)
- [Immunoprecipitation](#)
- [Flow Cytometry](#)
- [Cell Culture](#)

RPL18 Antibody (N-term) - Images



RPL18 Antibody (N-term) (Cat. #AP17491a) western blot analysis in Jurkat cell line lysates (35ug/lane). This demonstrates the RPL18 antibody detected the RPL18 protein (arrow).

RPL18 Antibody (N-term) - Background

Ribosomes, the organelles that catalyze protein synthesis, consist of a small 40S subunit and a large 60S subunit. Together these subunits are composed of 4 RNA species and approximately 80 structurally distinct proteins. This gene encodes a ribosomal protein that is a component of the 60S subunit. The protein belongs to the L18E family of ribosomal proteins. It is located in the cytoplasm. As is typical for genes encoding ribosomal proteins, there are multiple processed pseudogenes of this gene dispersed through the genome.

RPL18 Antibody (N-term) - References

- Bailey, S.D., et al. Diabetes Care 33(10):2250-2253(2010)
Talmud, P.J., et al. Am. J. Hum. Genet. 85(5):628-642(2009)
Sugiyama, N., et al. Mol. Cell Proteomics 6(6):1103-1109(2007)
Beausoleil, S.A., et al. Nat. Biotechnol. 24(10):1285-1292(2006)
Kullberg, M., et al. Mol. Biol. Evol. 23(8):1493-1503(2006)