

**RGMB Antibody (C-term)**  
**Affinity Purified Rabbit Polyclonal Antibody (Pab)**  
**Catalog # AP17489b**

**Specification**

---

**RGMB Antibody (C-term) - Product Information**

Application	WB,E
Primary Accession	<a href="#">O6NW40</a>
Other Accession	<a href="#">O7TQ33</a> , <a href="#">NP_001012779.2</a>
Reactivity	Human
Predicted	Mouse
Host	Rabbit
Clonality	Polyclonal
Isotype	Rabbit IgG
Calculated MW	47547
Antigen Region	380-407

**RGMB Antibody (C-term) - Additional Information**

**Gene ID** 285704

**Other Names**

RGMB domain family member B, DRG11-responsive axonal guidance and outgrowth of neurite, DRAGON, RGMB

**Target/Specificity**

This RGMB antibody is generated from rabbits immunized with a KLH conjugated synthetic peptide between 380-407 amino acids from the C-terminal region of human RGMB.

**Dilution**

WB~~1:1000

**Format**

Purified polyclonal antibody supplied in PBS with 0.09% (W/V) sodium azide. This antibody is purified through a protein A column, followed by peptide affinity purification.

**Storage**

Maintain refrigerated at 2-8°C for up to 2 weeks. For long term storage store at -20°C in small aliquots to prevent freeze-thaw cycles.

**Precautions**

RGMB Antibody (C-term) is for research use only and not for use in diagnostic or therapeutic procedures.

**RGMB Antibody (C-term) - Protein Information**

**Name** RGMB {ECO:0000303|PubMed:19324014, ECO:0000312|HGNC:HGNC:26896}

**Function** Member of the repulsive guidance molecule (RGM) family that contributes to the patterning of the developing nervous system (By similarity). Acts as a bone morphogenetic protein (BMP) coreceptor that potentiates BMP signaling (By similarity). Promotes neuronal adhesion (By similarity). May inhibit neurite outgrowth.

#### Cellular Location

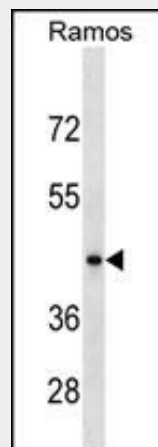
Cell membrane {ECO:0000250|UniProtKB:Q7TQ33}; Lipid-anchor, GPI-anchor {ECO:0000250|UniProtKB:Q7TQ33}. Membrane raft {ECO:0000250|UniProtKB:Q7TQ33}

#### RGMB Antibody (C-term) - Protocols

Provided below are standard protocols that you may find useful for product applications.

- [Western Blot](#)
- [Blocking Peptides](#)
- [Dot Blot](#)
- [Immunohistochemistry](#)
- [Immunofluorescence](#)
- [Immunoprecipitation](#)
- [Flow Cytometry](#)
- [Cell Culture](#)

#### RGMB Antibody (C-term) - Images



RGMB Antibody (C-term) (Cat. #AP17489b) western blot analysis in Ramos cell line lysates (35ug/lane). This demonstrates the RGMB antibody detected the RGMB protein (arrow).

#### RGMB Antibody (C-term) - Background

RGMB is a glycosylphosphatidylinositol (GPI)-anchored member of the repulsive guidance molecule family (see RGMA, MIM 607362) and contributes to the patterning of the developing nervous system (Samad et al., 2005 [PubMed 15671031]).

#### RGMB Antibody (C-term) - References

Samad, T.A., et al. J. Biol. Chem. 280(14):14122-14129(2005)  
Samad, T.A., et al. J. Neurosci. 24(8):2027-2036(2004)