

GPR32 Antibody (N-term)
Affinity Purified Rabbit Polyclonal Antibody (Pab)
Catalog # AP17488a

Specification

GPR32 Antibody (N-term) - Product Information

Application	WB,E
Primary Accession	O75388
Other Accession	NP_001497.1
Reactivity	Human
Host	Rabbit
Clonality	Polyclonal
Isotype	Rabbit IgG
Calculated MW	40087
Antigen Region	1-30

GPR32 Antibody (N-term) - Additional Information

Gene ID 2854

Other Names

Probable G-protein coupled receptor 32, GPR32

Target/Specificity

This GPR32 antibody is generated from rabbits immunized with a KLH conjugated synthetic peptide between 1-30 amino acids from the N-terminal region of human GPR32.

Dilution

WB~~1:1000

Format

Purified polyclonal antibody supplied in PBS with 0.09% (W/V) sodium azide. This antibody is purified through a protein A column, followed by peptide affinity purification.

Storage

Maintain refrigerated at 2-8°C for up to 2 weeks. For long term storage store at -20°C in small aliquots to prevent freeze-thaw cycles.

Precautions

GPR32 Antibody (N-term) is for research use only and not for use in diagnostic or therapeutic procedures.

GPR32 Antibody (N-term) - Protein Information

Name GPR32

Function G-protein coupled receptor that binds to several ligands including resolvin D1 (RvD1) with high affinity, leading to rapid and transient activation of numerous intracellular signaling

pathways. In macrophages, enhances the RvD1-stimulated phagocytic and clearance functions (PubMed:[20080636](#)). Macrophages migrate less toward different chemoattractant stimuli but phagocytose more microbial particles (PubMed:[26969756](#)). Prevents the increase in Ca(2+) and activation of ERK1/2 used by histamine and its H1 receptor subtype to induce goblet cell secretion by activating PKC and GRK2 to counter-regulate the histamine receptor (PubMed:[23462912](#)).

Cellular Location

Cell membrane; Multi-pass membrane protein.

Tissue Location

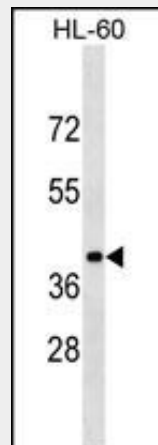
Expressed in resting primary human macrophages.

GPR32 Antibody (N-term) - Protocols

Provided below are standard protocols that you may find useful for product applications.

- [Western Blot](#)
- [Blocking Peptides](#)
- [Dot Blot](#)
- [Immunohistochemistry](#)
- [Immunofluorescence](#)
- [Immunoprecipitation](#)
- [Flow Cytometry](#)
- [Cell Culture](#)

GPR32 Antibody (N-term) - Images



GPR32 Antibody (N-term) (Cat. #AP17488a) western blot analysis in HL-60 cell line lysates (35ug/lane). This demonstrates the GPR32 antibody detected the GPR32 protein (arrow).

GPR32 Antibody (N-term) - Background

GPR32 is an Orphan receptor.

GPR32 Antibody (N-term) - References

Krishnamoorthy, S., et al. Proc. Natl. Acad. Sci. U.S.A. 107(4):1660-1665(2010)
Marchese, A., et al. Genomics 50(2):281-286(1998)