

**SKAP2 Antibody (Center)**  
**Affinity Purified Rabbit Polyclonal Antibody (Pab)**  
**Catalog # AP17423c**

### Specification

---

#### SKAP2 Antibody (Center) - Product Information

Application	WB,E
Primary Accession	<a href="#">O75563</a>
Other Accession	<a href="#">O920G0</a> , <a href="#">O3UNDO</a> , <a href="#">O32LP7</a> , <a href="#">NP_003921.2</a>
Reactivity	Human
Predicted	Bovine, Mouse, Rat
Host	Rabbit
Clonality	Polyclonal
Isotype	Rabbit IgG
Calculated MW	41217
Antigen Region	137-165

#### SKAP2 Antibody (Center) - Additional Information

**Gene ID** 8935

#### Other Names

Src kinase-associated phosphoprotein 2, Pyk2/RAFTK-associated protein, Retinoic acid-induced protein 70, SKAP55 homolog, SKAP-55HOM, SKAP-HOM, Src family-associated phosphoprotein 2, Src kinase-associated phosphoprotein 55-related protein, Src-associated adapter protein with PH and SH3 domains, SKAP2, PRAP, RA70, SAPS, SCAP2, SKAP55R

#### Target/Specificity

This SKAP2 antibody is generated from rabbits immunized with a KLH conjugated synthetic peptide between 137-165 amino acids from the Central region of human SKAP2.

#### Dilution

WB~~1:1000

#### Format

Purified polyclonal antibody supplied in PBS with 0.09% (W/V) sodium azide. This antibody is purified through a protein A column, followed by peptide affinity purification.

#### Storage

Maintain refrigerated at 2-8°C for up to 2 weeks. For long term storage store at -20°C in small aliquots to prevent freeze-thaw cycles.

#### Precautions

SKAP2 Antibody (Center) is for research use only and not for use in diagnostic or therapeutic procedures.

#### SKAP2 Antibody (Center) - Protein Information

**Name** SKAP2

**Synonyms** PRAP, RA70, SAPS, SCAP2, SKAP55R

**Function** May be involved in B-cell and macrophage adhesion processes. In B-cells, may act by coupling the B-cell receptor (BCR) to integrin activation. May play a role in src signaling pathway.

**Cellular Location**

Cytoplasm.

**Tissue Location**

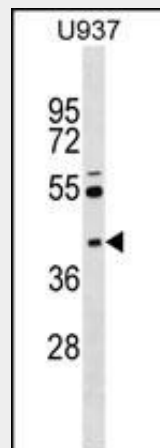
Ubiquitously expressed. Present in platelets (at protein level).

**SKAP2 Antibody (Center) - Protocols**

Provided below are standard protocols that you may find useful for product applications.

- [Western Blot](#)
- [Blocking Peptides](#)
- [Dot Blot](#)
- [Immunohistochemistry](#)
- [Immunofluorescence](#)
- [Immunoprecipitation](#)
- [Flow Cytometry](#)
- [Cell Culture](#)

**SKAP2 Antibody (Center) - Images**



SKAP2 Antibody (Center) (Cat. #AP17423c) western blot analysis in U937 cell line lysates (35ug/lane). This demonstrates the SKAP2 antibody detected the SKAP2 protein (arrow).

**SKAP2 Antibody (Center) - Background**

The protein encoded by this gene belongs to the src family kinases. This protein is similar to the src kinase associated phosphoprotein 1. It is an adaptor protein that is thought to play an essential role in the src signaling pathway in various cells. It inhibits PTK2B/RAFTK activity and regulates alpha-synuclein phosphorylation.

**SKAP2 Antibody (Center) - References**

Bailey, S.D., et al. Diabetes Care 33(10):2250-2253(2010)  
Qu, H.Q., et al. Hum. Mol. Genet. 19(12):2534-2538(2010)  
Talmud, P.J., et al. Am. J. Hum. Genet. 85(5):628-642(2009)  
Barrett, J.C., et al. Nat. Genet. 41(6):703-707(2009)  
Voss, M., et al. BMC Immunol. 10, 53 (2009) :