

**PDGFRL Antibody (N-term)**  
**Affinity Purified Rabbit Polyclonal Antibody (Pab)**  
**Catalog # AP17414a**

**Specification**

---

**PDGFRL Antibody (N-term) - Product Information**

Application	WB,E
Primary Accession	<a href="#">O15198</a>
Other Accession	<a href="#">O2PFX1</a> , <a href="#">O5BIP2</a> , <a href="#">NP_006198.1</a>
Reactivity	Human, Mouse
Predicted	Bovine, Monkey
Host	Rabbit
Clonality	Polyclonal
Isotype	Rabbit IgG
Calculated MW	41861
Antigen Region	16-44

**PDGFRL Antibody (N-term) - Additional Information**

**Gene ID** 5157

**Other Names**

Platelet-derived growth factor receptor-like protein, PDGFR-like protein, PDGF receptor beta-like tumor suppressor, PDGFRL, PRLTS

**Target/Specificity**

This PDGFRL antibody is generated from rabbits immunized with a KLH conjugated synthetic peptide between 16-44 amino acids from the N-terminal region of human PDGFRL.

**Dilution**

WB~~1:1000

**Format**

Purified polyclonal antibody supplied in PBS with 0.09% (W/V) sodium azide. This antibody is purified through a protein A column, followed by peptide affinity purification.

**Storage**

Maintain refrigerated at 2-8°C for up to 2 weeks. For long term storage store at -20°C in small aliquots to prevent freeze-thaw cycles.

**Precautions**

PDGFRL Antibody (N-term) is for research use only and not for use in diagnostic or therapeutic procedures.

**PDGFRL Antibody (N-term) - Protein Information**

**Name** PDGFRL

### Synonyms PRLTS

### Cellular Location

Secreted.

### Tissue Location

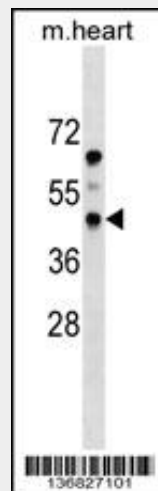
Expressed in colon, lung and liver.

### PDGFRL Antibody (N-term) - Protocols

Provided below are standard protocols that you may find useful for product applications.

- [Western Blot](#)
- [Blocking Peptides](#)
- [Dot Blot](#)
- [Immunohistochemistry](#)
- [Immunofluorescence](#)
- [Immunoprecipitation](#)
- [Flow Cytometry](#)
- [Cell Culture](#)

### PDGFRL Antibody (N-term) - Images



PDGFRL Antibody (N-term) (Cat. #AP17414a) western blot analysis in mouse heart tissue lysates (35ug/lane). This demonstrates the PDGFRL antibody detected the PDGFRL protein (arrow).

### PDGFRL Antibody (N-term) - Background

This gene encodes a protein with significant sequence similarity to the ligand binding domain of platelet-derived growth factor receptor beta. Mutations in this gene, or deletion of a chromosomal segment containing this gene, are associated with sporadic hepatocellular carcinomas, colorectal cancers, and non-small cell lung cancers. This suggests this gene product may function as a tumor suppressor.

### PDGFRL Antibody (N-term) - References

Davila, S., et al. Genes Immun. 11(3):232-238(2010)

Guo, F.J., et al. World J. Gastroenterol. 16(12):1465-1472(2010)  
Riker, A.I., et al. BMC Med Genomics 1, 13 (2008) :  
Xu, M., et al. BMC Genomics 9 SUPPL 1, S12 (2008) :  
Seitz, S., et al. Genes Chromosomes Cancer 45(6):612-627(2006)