

**EMP1 Antibody (N-term)**  
**Affinity Purified Rabbit Polyclonal Antibody (Pab)**  
**Catalog # AP17400a**

**Specification**

---

**EMP1 Antibody (N-term) - Product Information**

Application	WB,E
Primary Accession	<a href="#">P54849</a>
Other Accession	<a href="#">NP_001414.1</a>
Reactivity	Human
Host	Rabbit
Clonality	Polyclonal
Isotype	Rabbit IgG
Antigen Region	35-63

**EMP1 Antibody (N-term) - Additional Information**

**Gene ID** 2012

**Other Names**

Epithelial membrane protein 1, EMP-1, CL-20, Protein B4B, Tumor-associated membrane protein, EMP1, B4B, TMP

**Target/Specificity**

This EMP1 antibody is generated from rabbits immunized with a KLH conjugated synthetic peptide between 35-63 amino acids from the N-terminal region of human EMP1.

**Dilution**

WB~~1:500

**Format**

Purified polyclonal antibody supplied in PBS with 0.09% (W/V) sodium azide. This antibody is purified through a protein A column, followed by peptide affinity purification.

**Storage**

Maintain refrigerated at 2-8°C for up to 2 weeks. For long term storage store at -20°C in small aliquots to prevent freeze-thaw cycles.

**Precautions**

EMP1 Antibody (N-term) is for research use only and not for use in diagnostic or therapeutic procedures.

**EMP1 Antibody (N-term) - Protein Information**

**Name** EMP1

**Synonyms** B4B, TMP

### Cellular Location

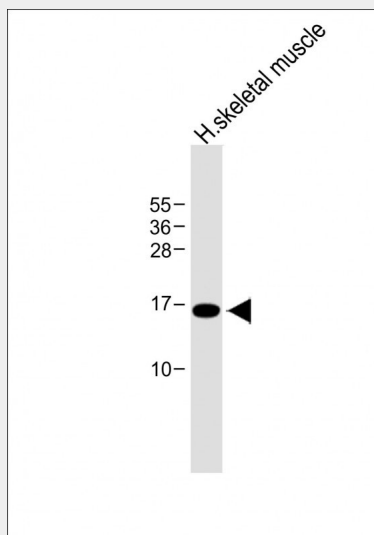
Membrane; Multi-pass membrane protein.

### EMP1 Antibody (N-term) - Protocols

Provided below are standard protocols that you may find useful for product applications.

- [Western Blot](#)
- [Blocking Peptides](#)
- [Dot Blot](#)
- [Immunohistochemistry](#)
- [Immunofluorescence](#)
- [Immunoprecipitation](#)
- [Flow Cytometry](#)
- [Cell Culture](#)

### EMP1 Antibody (N-term) - Images



Anti-EMP1 Antibody (N-term) at 1:500 dilution + Human skeletal muscle lysate Lysates/proteins at 20 µg per lane. Secondary Goat Anti-Rabbit IgG, (H+L), Peroxidase conjugated at 1/10000 dilution. Predicted band size : 18 kDa Blocking/Dilution buffer: 5% NFDM/TBST.

### EMP1 Antibody (N-term) - Background

The function of this protein remains unknown.

### EMP1 Antibody (N-term) - References

- Li, Y.Q., et al. Neurochem. Res. 34(9):1594-1602(2009)  
Jain, A., et al. Proc. Natl. Acad. Sci. U.S.A. 102(33):11858-11863(2005)  
Wang, H.T., et al. World J. Gastroenterol. 9(3):392-398(2003)  
Wang, H.T., et al. Ai Zheng 21(3):229-232(2002)  
Liehr, T., et al. Genomics 58(1):106-108(1999)