

DAPP1 Antibody (C-term)
Affinity Purified Rabbit Polyclonal Antibody (Pab)
Catalog # AP17383b

Specification

DAPP1 Antibody (C-term) - Product Information

Application	WB,E
Primary Accession	O9UN19
Other Accession	NP_055210.2
Reactivity	Human
Host	Rabbit
Clonality	Polyclonal
Isotype	Rabbit IgG
Calculated MW	32194
Antigen Region	247-275

DAPP1 Antibody (C-term) - Additional Information

Gene ID 27071

Other Names

Dual adapter for phosphotyrosine and 3-phosphotyrosine and 3-phosphoinositide, hDAPP1, B lymphocyte adapter protein Bam32, B-cell adapter molecule of 32 kDa, DAPP1, BAM32

Target/Specificity

This DAPP1 antibody is generated from rabbits immunized with a KLH conjugated synthetic peptide between 247-275 amino acids from the C-terminal region of human DAPP1.

Dilution

WB~~1:1000

Format

Purified polyclonal antibody supplied in PBS with 0.09% (W/V) sodium azide. This antibody is purified through a protein A column, followed by peptide affinity purification.

Storage

Maintain refrigerated at 2-8°C for up to 2 weeks. For long term storage store at -20°C in small aliquots to prevent freeze-thaw cycles.

Precautions

DAPP1 Antibody (C-term) is for research use only and not for use in diagnostic or therapeutic procedures.

DAPP1 Antibody (C-term) - Protein Information

Name DAPP1

Synonyms BAM32

Function May act as a B-cell-associated adapter that regulates B-cell antigen receptor (BCR)-signaling downstream of PI3K.

Cellular Location

Cytoplasm. Membrane; Peripheral membrane protein. Note=Membrane-associated after cell stimulation leading to its translocation

Tissue Location

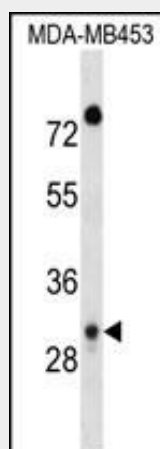
Highly expressed in placenta and lung, followed by brain, heart, kidney, liver, pancreas and skeletal muscle. Expressed by B-lymphocytes, but not T-lymphocytes or nonhematopoietic cells

DAPP1 Antibody (C-term) - Protocols

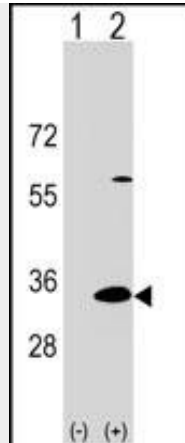
Provided below are standard protocols that you may find useful for product applications.

- [Western Blot](#)
- [Blocking Peptides](#)
- [Dot Blot](#)
- [Immunohistochemistry](#)
- [Immunofluorescence](#)
- [Immunoprecipitation](#)
- [Flow Cytometry](#)
- [Cell Culture](#)

DAPP1 Antibody (C-term) - Images



DAPP1 Antibody (C-term) (Cat. #AP17383b) western blot analysis in MDA-MB453 cell line lysates (35ug/lane). This demonstrates the DAPP1 antibody detected the DAPP1 protein (arrow).



Western blot analysis of DAPP1 (arrow) using rabbit polyclonal DAPP1 Antibody (C-term) (Cat. #AP17383b). 293 cell lysates (2 ug/lane) either nontransfected (Lane 1) or transiently transfected (Lane 2) with the DAPP1 gene.

DAPP1 Antibody (C-term) - Background

DAPP1 may act as a B-cell-associated adapter that regulates B-cell antigen receptor (BCR)-signaling downstream of PI3K.

DAPP1 Antibody (C-term) - References

- Manna, D., et al. J. Biol. Chem. 282(44):32093-32105(2007)
- Nihiro, H., et al. J. Immunol. 173(9):5601-5609(2004)
- Allam, A., et al. J. Biol. Chem. 279(38):39775-39782(2004)
- Han, A., et al. Immunity 19(4):621-632(2003)
- Marshall, A.J., et al. Mol. Cell. Biol. 22(15):5479-5491(2002)