

NET1 Antibody (Center)
Affinity Purified Rabbit Polyclonal Antibody (Pab)
Catalog # AP17382C

Specification

NET1 Antibody (Center) - Product Information

Application	WB,E
Primary Accession	O7Z628
Other Accession	NP_001040625.1 , NP_005854.2
Reactivity	Human, Mouse
Host	Rabbit
Clonality	Polyclonal
Isotype	Rabbit IgG
Calculated MW	67740
Antigen Region	356-385

NET1 Antibody (Center) - Additional Information

Gene ID 10276

Other Names

Neuroepithelial cell-transforming gene 1 protein, Proto-oncogene p65 Net1, Rho guanine nucleotide exchange factor 8, NET1, ARHGEF8

Target/Specificity

This NET1 antibody is generated from rabbits immunized with a KLH conjugated synthetic peptide between 356-385 amino acids from the Central region of human NET1.

Dilution

WB~~1:1000

Format

Purified polyclonal antibody supplied in PBS with 0.09% (W/V) sodium azide. This antibody is purified through a protein A column, followed by peptide affinity purification.

Storage

Maintain refrigerated at 2-8°C for up to 2 weeks. For long term storage store at -20°C in small aliquots to prevent freeze-thaw cycles.

Precautions

NET1 Antibody (Center) is for research use only and not for use in diagnostic or therapeutic procedures.

NET1 Antibody (Center) - Protein Information

Name NET1

Synonyms ARHGEF8

Function Acts as a guanine nucleotide exchange factor (GEF) for RhoA GTPase. May be involved in activation of the SAPK/JNK pathway Stimulates genotoxic stress-induced RHOB activity in breast cancer cells leading to their cell death.

Cellular Location
Cytoplasm. Nucleus.

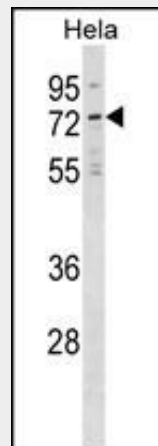
Tissue Location
Widely expressed..

NET1 Antibody (Center) - Protocols

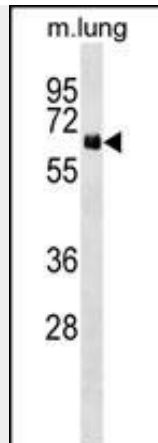
Provided below are standard protocols that you may find useful for product applications.

- [Western Blot](#)
- [Blocking Peptides](#)
- [Dot Blot](#)
- [Immunohistochemistry](#)
- [Immunofluorescence](#)
- [Immunoprecipitation](#)
- [Flow Cytometry](#)
- [Cell Culture](#)

NET1 Antibody (Center) - Images



NET1 Antibody (Center) (Cat. #AP17382c) western blot analysis in HeLa cell line lysates (35ug/lane). This demonstrates the NET1 antibody detected the NET1 protein (arrow).



NET1 Antibody (Center) (Cat. #AP17382c) western blot analysis in mouse lung tissue lysates (35ug/lane). This demonstrates the NET1 antibody detected the NET1 protein (arrow).

NET1 Antibody (Center) - Background

NET1 acts as guanine nucleotide exchange factor (GEF) for RhoA GTPase. May be involved in activation of the SAPK/JNK pathway (By similarity).

NET1 Antibody (Center) - References

Lee, J., et al. J. Biol. Chem. 285(34):26618-26627(2010)
Carr, H.S., et al. J. Biol. Chem. 284(36):24269-24280(2009)
Gilcrease, M.Z., et al. Cancer Epidemiol. Biomarkers Prev. 18(1):80-86(2009)
Murray, D., et al. Br. J. Cancer 99(8):1322-1329(2008)
Guerra, L., et al. PLoS ONE 3 (5), E2254 (2008) :

NET1 Antibody (Center) - Citations

- [Multi-target siRNA: Therapeutic Strategy for Hepatocellular Carcinoma.](#)