

**AADACL2 Antibody (Center)**  
**Affinity Purified Rabbit Polyclonal Antibody (Pab)**  
**Catalog # AP17376C**

**Specification**

---

**AADACL2 Antibody (Center) - Product Information**

|                   |                             |
|-------------------|-----------------------------|
| Application       | WB,E                        |
| Primary Accession | <a href="#">O6P093</a>      |
| Other Accession   | <a href="#">NP_997248.2</a> |
| Reactivity        | Human                       |
| Host              | Rabbit                      |
| Clonality         | Polyclonal                  |
| Isotype           | Rabbit IgG                  |
| Antigen Region    | 156-182                     |

**AADACL2 Antibody (Center) - Additional Information**

**Gene ID** 344752

**Other Names**

Arylacetamide deacetylase-like 2, 311-, AADACL2

**Target/Specificity**

This AADACL2 antibody is generated from rabbits immunized with a KLH conjugated synthetic peptide between 156-182 amino acids from the Central region of human AADACL2.

**Dilution**

WB~~1:2000

**Format**

Purified polyclonal antibody supplied in PBS with 0.09% (W/V) sodium azide. This antibody is purified through a protein A column, followed by peptide affinity purification.

**Storage**

Maintain refrigerated at 2-8°C for up to 2 weeks. For long term storage store at -20°C in small aliquots to prevent freeze-thaw cycles.

**Precautions**

AADACL2 Antibody (Center) is for research use only and not for use in diagnostic or therapeutic procedures.

**AADACL2 Antibody (Center) - Protein Information**

**Name** AADACL2

**Cellular Location**

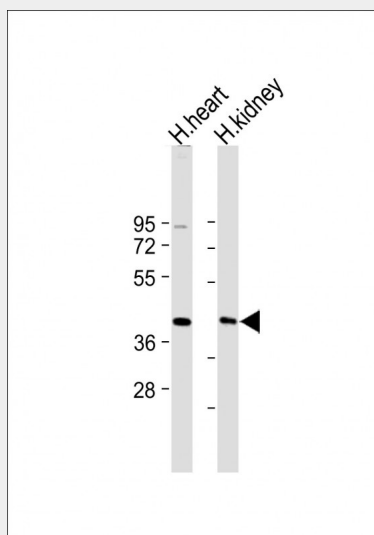
Secreted.

## AADACL2 Antibody (Center) - Protocols

Provided below are standard protocols that you may find useful for product applications.

- [Western Blot](#)
- [Blocking Peptides](#)
- [Dot Blot](#)
- [Immunohistochemistry](#)
- [Immunofluorescence](#)
- [Immunoprecipitation](#)
- [Flow Cytometry](#)
- [Cell Culture](#)

## AADACL2 Antibody (Center) - Images



All lanes : Anti-AADACL2 Antibody (Center) at 1:2000 dilution Lane 1: Human heart lysate Lane 2: Human kidney lysate Lysates/proteins at 20 µg per lane. Secondary Goat Anti-Rabbit IgG, (H+L), Peroxidase conjugated at 1/10000 dilution. Predicted band size : 46 kDa Blocking/Dilution buffer: 5% NFDM/TBST.

## AADACL2 Antibody (Center) - Background

AADACL2 has hydrolase activity and is involved in drug metabolism.

## AADACL2 Antibody (Center) - References

Lamesch, P., et al. Genomics 89(3):307-315(2007)  
Toulza, E., et al. Genome Biol. 8 (6), R107 (2007) :