

**ZNF131 Antibody (Center)**  
**Affinity Purified Rabbit Polyclonal Antibody (Pab)**  
**Catalog # AP17347c**

**Specification**

---

**ZNF131 Antibody (Center) - Product Information**

Application	WB,E
Primary Accession	<a href="#">P52739</a>
Other Accession	<a href="#">NP_003423.1</a>
Reactivity	Human
Host	Rabbit
Clonality	Polyclonal
Isotype	Rabbit IgG
Calculated MW	71422
Antigen Region	205-233

**ZNF131 Antibody (Center) - Additional Information**

**Gene ID** 7690

**Other Names**

Zinc finger protein 131, ZNF131

**Target/Specificity**

This ZNF131 antibody is generated from rabbits immunized with a KLH conjugated synthetic peptide between 205-233 amino acids from the Central region of human ZNF131.

**Dilution**

WB~~1:1000

**Format**

Purified polyclonal antibody supplied in PBS with 0.09% (W/V) sodium azide. This antibody is purified through a protein A column, followed by peptide affinity purification.

**Storage**

Maintain refrigerated at 2-8°C for up to 2 weeks. For long term storage store at -20°C in small aliquots to prevent freeze-thaw cycles.

**Precautions**

ZNF131 Antibody (Center) is for research use only and not for use in diagnostic or therapeutic procedures.

**ZNF131 Antibody (Center) - Protein Information**

**Name** ZNF131

**Function** Plays a role during development and organogenesis as well as in the function of the adult central nervous system (By similarity). May be involved in transcriptional regulation as a

repressor of ESR1/ER-alpha signaling.

#### Cellular Location

Nucleus Note=Sumoylation does not affect nuclear localization

#### Tissue Location

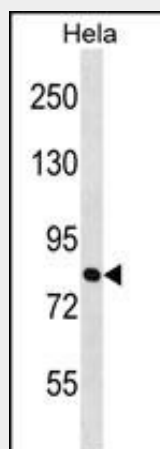
Predominant expression is found in different brain areas such as the occipital and temporal lobe, the nucleus caudatus, hippocampus, and the cerebellum as well as in testis and thymus

### ZNF131 Antibody (Center) - Protocols

Provided below are standard protocols that you may find useful for product applications.

- [Western Blot](#)
- [Blocking Peptides](#)
- [Dot Blot](#)
- [Immunohistochemistry](#)
- [Immunofluorescence](#)
- [Immunoprecipitation](#)
- [Flow Cytometry](#)
- [Cell Culture](#)

### ZNF131 Antibody (Center) - Images



ZNF131 Antibody (Center) (Cat. #AP17347c) western blot analysis in HeLa cell line lysates (35ug/lane). This demonstrates the ZNF131 antibody detected the ZNF131 protein (arrow).

### ZNF131 Antibody (Center) - Background

ZNF131 may be involved in transcriptional regulation. Plays a role during development and organogenesis as well as in the function of the adult central nervous system (By similarity).

### ZNF131 Antibody (Center) - References

- Han, X., et al. BMC Genomics 9, 476 (2008) :  
Donaldson, N.S., et al. Biochim. Biophys. Acta 1773(4):546-555(2007)  
Schmutz, J., et al. Nature 431(7006):268-274(2004)  
Trappe, R., et al. Biochem. Biophys. Res. Commun. 296(2):319-327(2002)  
Tommerup, N., et al. Genomics 27(2):259-264(1995)