

**NUP43 Antibody (Center)**  
**Affinity Purified Rabbit Polyclonal Antibody (Pab)**  
**Catalog # AP17331c**

**Specification**

---

**NUP43 Antibody (Center) - Product Information**

Application	WB,E
Primary Accession	<a href="#">O8NFH3</a>
Other Accession	<a href="#">NP_942590.1</a>
Reactivity	Human
Host	Rabbit
Clonality	Polyclonal
Isotype	Rabbit IgG
Calculated MW	42151
Antigen Region	142-171

**NUP43 Antibody (Center) - Additional Information**

**Gene ID** 348995

**Other Names**

Nucleoporin Nup43, Nup107-160 subcomplex subunit Nup43, p42, NUP43

**Target/Specificity**

This NUP43 antibody is generated from rabbits immunized with a KLH conjugated synthetic peptide between 142-171 amino acids from the Central region of human NUP43.

**Dilution**

WB~~1:1000

**Format**

Purified polyclonal antibody supplied in PBS with 0.09% (W/V) sodium azide. This antibody is purified through a protein A column, followed by peptide affinity purification.

**Storage**

Maintain refrigerated at 2-8°C for up to 2 weeks. For long term storage store at -20°C in small aliquots to prevent freeze-thaw cycles.

**Precautions**

NUP43 Antibody (Center) is for research use only and not for use in diagnostic or therapeutic procedures.

**NUP43 Antibody (Center) - Protein Information**

**Name** NUP43

**Function** Component of the Nup107-160 subcomplex of the nuclear pore complex (NPC). The Nup107-160 subcomplex is required for the assembly of a functional NPC. The Nup107-160

subcomplex is also required for normal kinetochore microtubule attachment, mitotic progression and chromosome segregation.

#### Cellular Location

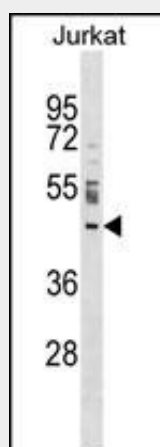
Chromosome, centromere, kinetochore. Nucleus, nuclear pore complex

#### NUP43 Antibody (Center) - Protocols

Provided below are standard protocols that you may find useful for product applications.

- [Western Blot](#)
- [Blocking Peptides](#)
- [Dot Blot](#)
- [Immunohistochemistry](#)
- [Immunofluorescence](#)
- [Immunoprecipitation](#)
- [Flow Cytometry](#)
- [Cell Culture](#)

#### NUP43 Antibody (Center) - Images



NUP43 Antibody (Center) (Cat. #AP17331c) western blot analysis in Jurkat cell line lysates (35ug/lane). This demonstrates the NUP43 antibody detected the NUP43 protein (arrow).

#### NUP43 Antibody (Center) - Background

Bidirectional transport of macromolecules between the cytoplasm and nucleus occurs through nuclear pore complexes (NPCs) embedded in the nuclear envelope. NPCs are composed of subcomplexes, and NUP43 is part of one such subcomplex, Nup107-160 (Loiodice et al., 2004 [PubMed 15146057]).

#### NUP43 Antibody (Center) - References

- Zuccolo, M., et al. EMBO J. 26(7):1853-1864(2007)  
Glavy, J.S., et al. Proc. Natl. Acad. Sci. U.S.A. 104(10):3811-3816(2007)  
Loiodice, I., et al. Mol. Biol. Cell 15(7):3333-3344(2004)  
Le Rouzic, E., et al. J. Biol. Chem. 277(47):45091-45098(2002)  
Cronshaw, J.M., et al. J. Cell Biol. 158(5):915-927(2002)