

TCF25 Antibody (N-term)
Affinity Purified Rabbit Polyclonal Antibody (Pab)
Catalog # AP17279a**Specification**

TCF25 Antibody (N-term) - Product Information

Application	IF, WB,E
Primary Accession	O9BQ70
Other Accession	O8R3L2 , NP_055787.1
Reactivity	Human
Predicted	Mouse
Host	Rabbit
Clonality	Polyclonal
Isotype	Rabbit IgG
Calculated MW	76667
Antigen Region	186-215

TCF25 Antibody (N-term) - Additional Information**Gene ID** 22980**Other Names**

Transcription factor 25, TCF-25, Nuclear localized protein 1, TCF25, KIAA1049, NULP1

Target/Specificity

This TCF25 antibody is generated from rabbits immunized with a KLH conjugated synthetic peptide between 186-215 amino acids from the N-terminal region of human TCF25.

Dilution

IF~~1:10~50

WB~~1:1000

Format

Purified polyclonal antibody supplied in PBS with 0.09% (W/V) sodium azide. This antibody is purified through a protein A column, followed by peptide affinity purification.

Storage

Maintain refrigerated at 2-8°C for up to 2 weeks. For long term storage store at -20°C in small aliquots to prevent freeze-thaw cycles.

Precautions

TCF25 Antibody (N-term) is for research use only and not for use in diagnostic or therapeutic procedures.

TCF25 Antibody (N-term) - Protein Information**Name** TCF25 {ECO:0000303|PubMed:30244831, ECO:0000312|HGNC:HGNC:29181}

Function Component of the ribosome quality control complex (RQC), a ribosome-associated complex that mediates ubiquitination and extraction of incompletely synthesized nascent chains for proteasomal degradation (PubMed:[30244831](#)). In the RQC complex, required to promote formation of 'Lys-48'-linked polyubiquitin chains during ubiquitination of incompletely synthesized proteins by LTN1 (PubMed:[30244831](#)). Also acts as a transcriptional repressor: represses transcription of SRF in vitro and so may play a role in heart development (PubMed:[16574069](#)). May play a role in cell death control (By similarity).

Cellular Location

Nucleus. Cytoplasm, cytosol. Note=Mainly nuclear

Tissue Location

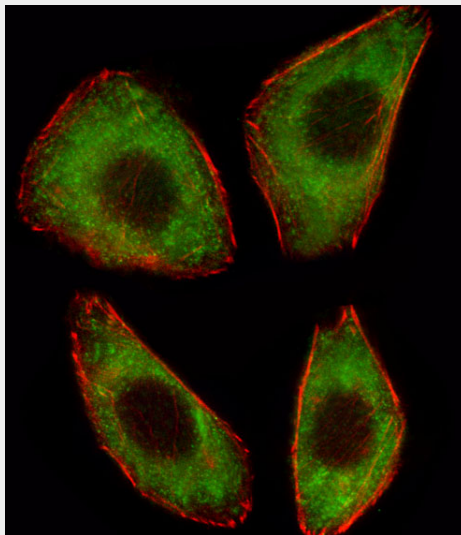
In the embryo, widely expressed with highest levels in brain. In the adult, highest expression is found in the heart

TCF25 Antibody (N-term) - Protocols

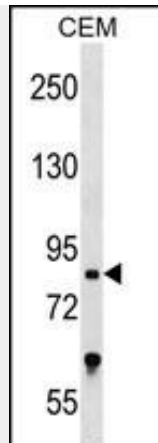
Provided below are standard protocols that you may find useful for product applications.

- [Western Blot](#)
- [Blocking Peptides](#)
- [Dot Blot](#)
- [Immunohistochemistry](#)
- [Immunofluorescence](#)
- [Immunoprecipitation](#)
- [Flow Cytometry](#)
- [Cell Culture](#)

TCF25 Antibody (N-term) - Images



Fluorescent image of A549 cell stained with TCF25 Antibody (N-term)(Cat#AP17279a).A549 cells were fixed with 4% PFA (20 min), permeabilized with Triton X-100 (0.1%, 10 min), then incubated with TCF25 primary antibody (1:25, 1 h at 37°C). For secondary antibody, Alexa Fluor® 488 conjugated donkey anti-rabbit antibody (green) was used (1:400, 50 min at 37°C).Cytoplasmic actin was counterstained with Alexa Fluor® 555 (red) conjugated Phalloidin (7units/ml, 1 h at 37°C).TCF25 immunoreactivity is localized to Cytoplasm significantly.



TCF25 Antibody (N-term) (Cat. #AP17279a) western blot analysis in CEM cell line lysates (35ug/lane). This demonstrates the TCF25 antibody detected the TCF25 protein (arrow).

TCF25 Antibody (N-term) - Background

TCF25 is a member of the basic helix-loop-helix (bHLH) family of transcription factors that are important in embryonic development (Steen and Lindholm, 2008 [PubMed 18068114]). [supplied by OMIM].

TCF25 Antibody (N-term) - References

- Yoshida, T., et al. *Int. J. Mol. Med.* 25(4):649-656(2010)
- Oguri, M., et al. *Am. J. Hypertens.* 23(1):70-77(2010)
- Venkatesan, K., et al. *Nat. Methods* 6(1):83-90(2009)
- Steen, H., et al. *Biochem. Biophys. Res. Commun.* 366(2):432-437(2008)
- Cai, Z., et al. *Biochem. Biophys. Res. Commun.* 343(3):973-981(2006)