

**EPDR1 Antibody (Center)**  
**Affinity Purified Rabbit Polyclonal Antibody (Pab)**  
**Catalog # AP17258c****Specification**

---

**EPDR1 Antibody (Center) - Product Information**

Application	WB,E
Primary Accession	<a href="#">O9UM22</a>
Other Accession	<a href="#">O9N0C7</a> , <a href="#">A6QLI0</a> , <a href="#">NP_060019.1</a>
Reactivity	Human
Predicted	Bovine, Monkey
Host	Rabbit
Clonality	Polyclonal
Isotype	Rabbit IgG
Antigen Region	133-161

**EPDR1 Antibody (Center) - Additional Information****Gene ID** 54749**Other Names**

Mammalian ependymin-related protein 1, MERP-1, Upregulated in colorectal cancer gene 1 protein, EPDR1, MERP1, UCC1

**Target/Specificity**

This EPDR1 antibody is generated from rabbits immunized with a KLH conjugated synthetic peptide between 133-161 amino acids from the Central region of human EPDR1.

**Dilution**

WB~~1:1000

**Format**

Purified polyclonal antibody supplied in PBS with 0.09% (W/V) sodium azide. This antibody is purified through a protein A column, followed by peptide affinity purification.

**Storage**

Maintain refrigerated at 2-8°C for up to 2 weeks. For long term storage store at -20°C in small aliquots to prevent freeze-thaw cycles.

**Precautions**

EPDR1 Antibody (Center) is for research use only and not for use in diagnostic or therapeutic procedures.

**EPDR1 Antibody (Center) - Protein Information****Name** EPDR1**Synonyms** MERP1, UCC1

**Function** Binds anionic lipids and gangliosides at acidic pH.

**Cellular Location**

Lysosome lumen. Secreted. Note=Lysosomal and also secreted.

**Tissue Location**

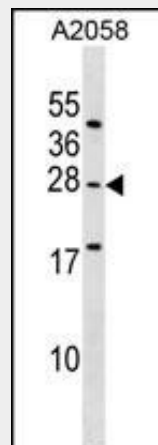
Ubiquitous. Detected in brain, heart, skeletal muscle, kidney, testis, ovary and prostate

**EPDR1 Antibody (Center) - Protocols**

Provided below are standard protocols that you may find useful for product applications.

- [Western Blot](#)
- [Blocking Peptides](#)
- [Dot Blot](#)
- [Immunohistochemistry](#)
- [Immunofluorescence](#)
- [Immunoprecipitation](#)
- [Flow Cytometry](#)
- [Cell Culture](#)

**EPDR1 Antibody (Center) - Images**



EPDR1 Antibody (Center) (Cat. #AP17258c) western blot analysis in A2058 cell line lysates (35ug/lane). This demonstrates the EPDR1 antibody detected the EPDR1 protein (arrow).

**EPDR1 Antibody (Center) - Background**

The protein encoded by this gene is a type II transmembrane protein and is similar to two families of cell adhesion molecules, the protocadherins and ependymins. This protein may play a role in calcium dependent cell adhesion. [provided by RefSeq].

**EPDR1 Antibody (Center) - References**

Rose, J.E., et al. Mol. Med. 16 (7-8), 247-253 (2010) ;  
Rivadeneira, F., et al. Nat. Genet. 41(11):1199-1206(2009)  
Suga, T., et al. Int. J. Radiat. Oncol. Biol. Phys. 72(3):808-813(2008)  
Lim, J., et al. Cell 125(4):801-814(2006)

Gregorio-King, C.C., et al. Gene 286(2):249-257(2002)