

**EPB41L4A Antibody (C-term)**  
**Affinity Purified Rabbit Polyclonal Antibody (Pab)**  
**Catalog # AP17257B**

**Specification**

---

**EPB41L4A Antibody (C-term) - Product Information**

Application	WB,E
Primary Accession	<a href="#">O9HCS5</a>
Other Accession	<a href="#">NP_071423.3</a>
Reactivity	Human
Host	Rabbit
Clonality	Polyclonal
Isotype	Rabbit IgG
Calculated MW	79059
Antigen Region	562-590

**EPB41L4A Antibody (C-term) - Additional Information**

**Gene ID** 64097

**Other Names**

Band 41-like protein 4A, Protein NBL4, EPB41L4A, EPB41L4

**Target/Specificity**

This EPB41L4A antibody is generated from rabbits immunized with a KLH conjugated synthetic peptide between 562-590 amino acids from the C-terminal region of human EPB41L4A.

**Dilution**

WB~~1:1000

**Format**

Purified polyclonal antibody supplied in PBS with 0.09% (W/V) sodium azide. This antibody is purified through a protein A column, followed by peptide affinity purification.

**Storage**

Maintain refrigerated at 2-8°C for up to 2 weeks. For long term storage store at -20°C in small aliquots to prevent freeze-thaw cycles.

**Precautions**

EPB41L4A Antibody (C-term) is for research use only and not for use in diagnostic or therapeutic procedures.

**EPB41L4A Antibody (C-term) - Protein Information**

**Name** EPB41L4A ([HGNC:13278](#))

**Synonyms** EPB41L4

**Cellular Location**

Cytoplasm, cytoskeleton.

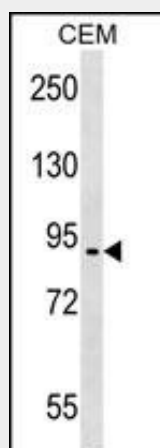
**Tissue Location**

Expressed in many tissues. High levels of expression in brain, liver, thymus and peripheral blood leukocytes and low levels of expression in heart, kidney, testis and colon

**EPB41L4A Antibody (C-term) - Protocols**

Provided below are standard protocols that you may find useful for product applications.

- [Western Blot](#)
- [Blocking Peptides](#)
- [Dot Blot](#)
- [Immunohistochemistry](#)
- [Immunofluorescence](#)
- [Immunoprecipitation](#)
- [Flow Cytometry](#)
- [Cell Culture](#)

**EPB41L4A Antibody (C-term) - Images**

EPB41L4A Antibody (C-term) (Cat. #AP17257b) western blot analysis in CEM cell line lysates (35ug/lane). This demonstrates the EPB41L4A antibody detected the EPB41L4A protein (arrow).

**EPB41L4A Antibody (C-term) - Background**

Members of the band 4.1 protein superfamily, including EPB41L4A, are thought to regulate the interaction between the cytoskeleton and plasma membrane (Ishiguro et al., 2000 [PubMed 10874211]).

**EPB41L4A Antibody (C-term) - References**

Rose, J.E., et al. Mol. Med. 16 (7-8), 247-253 (2010) :  
Olsen, J.V., et al. Cell 127(3):635-648(2006)  
Olsen, J.V., et al. Cell 127(3):635-648(2006)  
Ishiguro, H., et al. Jpn. J. Cancer Res. 91(6):597-603(2000)  
Shimizu, K., et al. Genomics 65(2):113-120(2000)