

**LOXL4 Antibody (C-term)**  
**Affinity Purified Rabbit Polyclonal Antibody (Pab)**  
**Catalog # AP17245b**

**Specification**

---

**LOXL4 Antibody (C-term) - Product Information**

Application	WB, FC,E
Primary Accession	<a href="#">O96JB6</a>
Other Accession	<a href="#">NP_115587.6</a>
Reactivity	Human, Mouse
Host	Rabbit
Clonality	Polyclonal
Isotype	Rabbit IgG
Calculated MW	84483
Antigen Region	575-603

**LOXL4 Antibody (C-term) - Additional Information**

**Gene ID** 84171

**Other Names**

Lysyl oxidase homolog 4, 143-, Lysyl oxidase-like protein 4, Lysyl oxidase-related protein C, LOXL4, LOXC

**Target/Specificity**

This LOXL4 antibody is generated from rabbits immunized with a KLH conjugated synthetic peptide between 575-603 amino acids from the C-terminal region of human LOXL4.

**Dilution**

WB~~1:1000  
FC~~1:25

**Format**

Purified polyclonal antibody supplied in PBS with 0.09% (W/V) sodium azide. This antibody is purified through a protein A column, followed by peptide affinity purification.

**Storage**

Maintain refrigerated at 2-8°C for up to 2 weeks. For long term storage store at -20°C in small aliquots to prevent freeze-thaw cycles.

**Precautions**

LOXL4 Antibody (C-term) is for research use only and not for use in diagnostic or therapeutic procedures.

**LOXL4 Antibody (C-term) - Protein Information**

**Name** LOXL4

## Synonyms LOXC

**Function** Catalyzes the oxidative deamination of lysine and hydroxylysine residues in collagen and elastin, resulting in the formation of covalent cross-linkages, and the stabilization of collagen and elastin fibers.

## Cellular Location

Secreted, extracellular space.

## Tissue Location

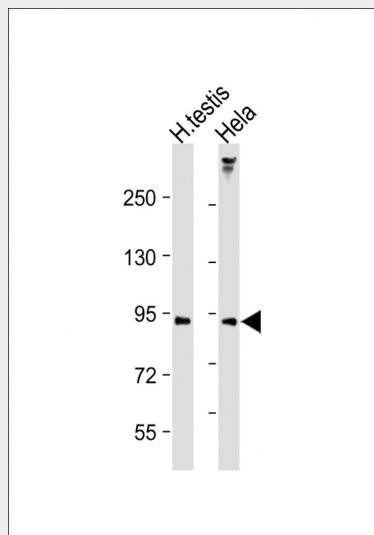
Expressed in many tissues, the highest levels among the tissues studied being in the skeletal muscle, testis and pancreas Expressed in cartilage

## LOXL4 Antibody (C-term) - Protocols

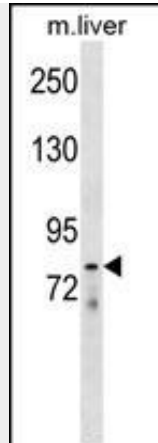
Provided below are standard protocols that you may find useful for product applications.

- [Western Blot](#)
- [Blocking Peptides](#)
- [Dot Blot](#)
- [Immunohistochemistry](#)
- [Immunofluorescence](#)
- [Immunoprecipitation](#)
- [Flow Cytometry](#)
- [Cell Culture](#)

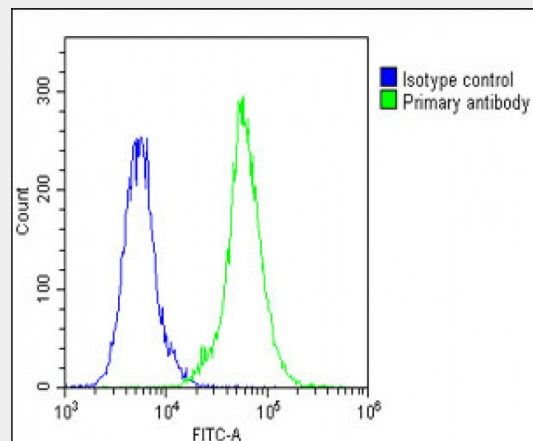
## LOXL4 Antibody (C-term) - Images



All lanes : Anti-LOXL4 Antibody (Center) at 1:2000 dilution Lane 1: Human testis lysate Lane 2: HeLa whole cell lysate Lysates/proteins at 20 µg per lane. Secondary Goat Anti-Rabbit IgG, (H+L), Peroxidase conjugated at 1/10000 dilution. Predicted band size : 84 kDa Blocking/Dilution buffer: 5% NFD/MTBST.



LOXL4 Antibody (C-term) (Cat. #AP17245b) western blot analysis in mouse liver tissue lysates (35ug/lane). This demonstrates the LOXL4 antibody detected the LOXL4 protein (arrow).



Overlay histogram showing A549 cells stained with AP17245b (green line). The cells were fixed with 2% paraformaldehyde (10 min) and then permeabilized with 90% methanol for 10 min. The cells were then incubated in 2% bovine serum albumin to block non-specific protein-protein interactions followed by the antibody (AP17245b, 1:25 dilution) for 60 min at 37°C. The secondary antibody used was Goat-Anti-Rabbit IgG, DyLight® 488 Conjugated Highly Cross-Adsorbed (1583138) at 1/200 dilution for 40 min at 37°C. Isotype control antibody (blue line) was rabbit IgG1 (1µg/1x10<sup>6</sup> cells) used under the same conditions. Acquisition of >10,000 events was performed.

### LOXL4 Antibody (C-term) - Background

This gene encodes a member of the lysyl oxidase gene family. The prototypic member of the family is essential to the biogenesis of connective tissue, encoding an extracellular copper-dependent amine oxidase that catalyses the first step in the formation of crosslinks in collagens and elastin. A highly conserved amino acid sequence at the C-terminus end appears to be sufficient for amine oxidase activity, suggesting that each family member may retain this function. The N-terminus is poorly conserved and may impart additional roles in developmental regulation, senescence, tumor suppression, cell growth control, and chemotaxis to each member of the family.

### LOXL4 Antibody (C-term) - References

Venkatesan, K., et al. Nat. Methods 6(1):83-90(2009)  
Sebban, S., et al. Virchows Arch. 454(1):71-79(2009)  
Gorogh, T., et al. Int. J. Oncol. 33(5):1091-1098(2008)  
Kim, D.J., et al. Biochem. Biophys. Res. Commun. 373(4):521-527(2008)  
Weise, J.B., et al. Int. J. Oncol. 32(2):317-322(2008)